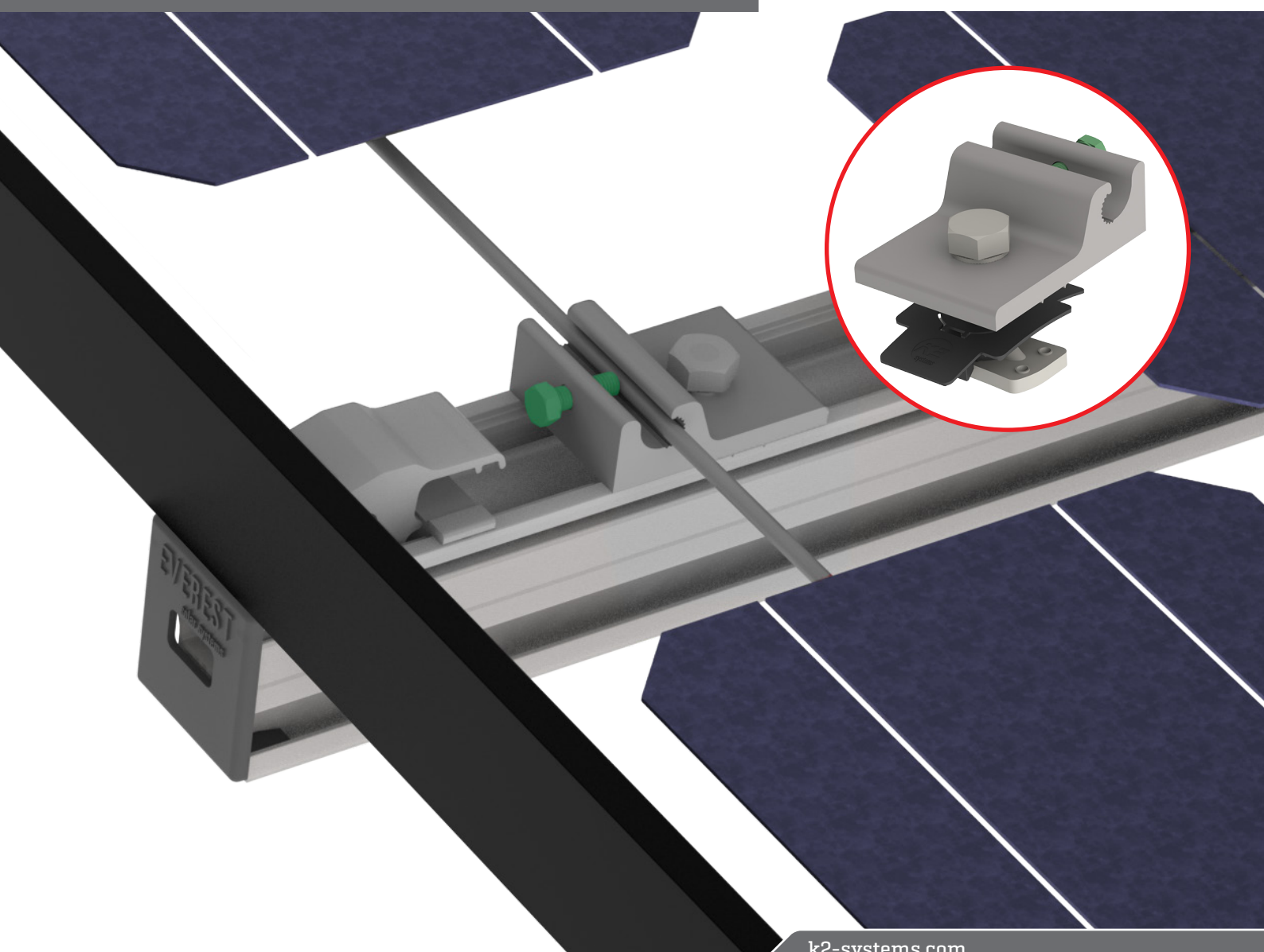
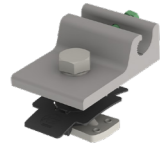


Everest Ground Lug

QUICK GUIDE

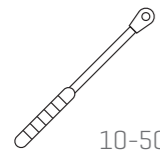


Components



Part Number	Description
4000006-H	Everest Ground Lug, 13mm Hex

Tools overview



10-50 ft-lb
[6 - 35 Nm]



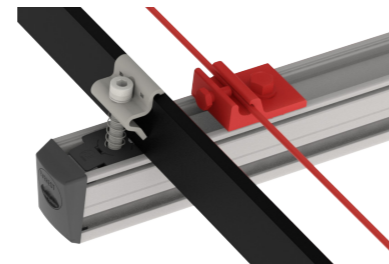
13 mm dep socket
▶ Torque 10 ft-lbs



7/16" socket
▶ Torque 35-60 in-lbs

Important note

! CrossRail components are required to be electrically bonded and grounded via the Everest Ground Lug or Burndy's WEEB Lug 10 and the use of #6 or #8 AWG solid copper wire. A minimum of one lug is required per each independent row of modules. The Everest Ground Lug must be attached to the top channel of CrossRail, as shown.



Assembly

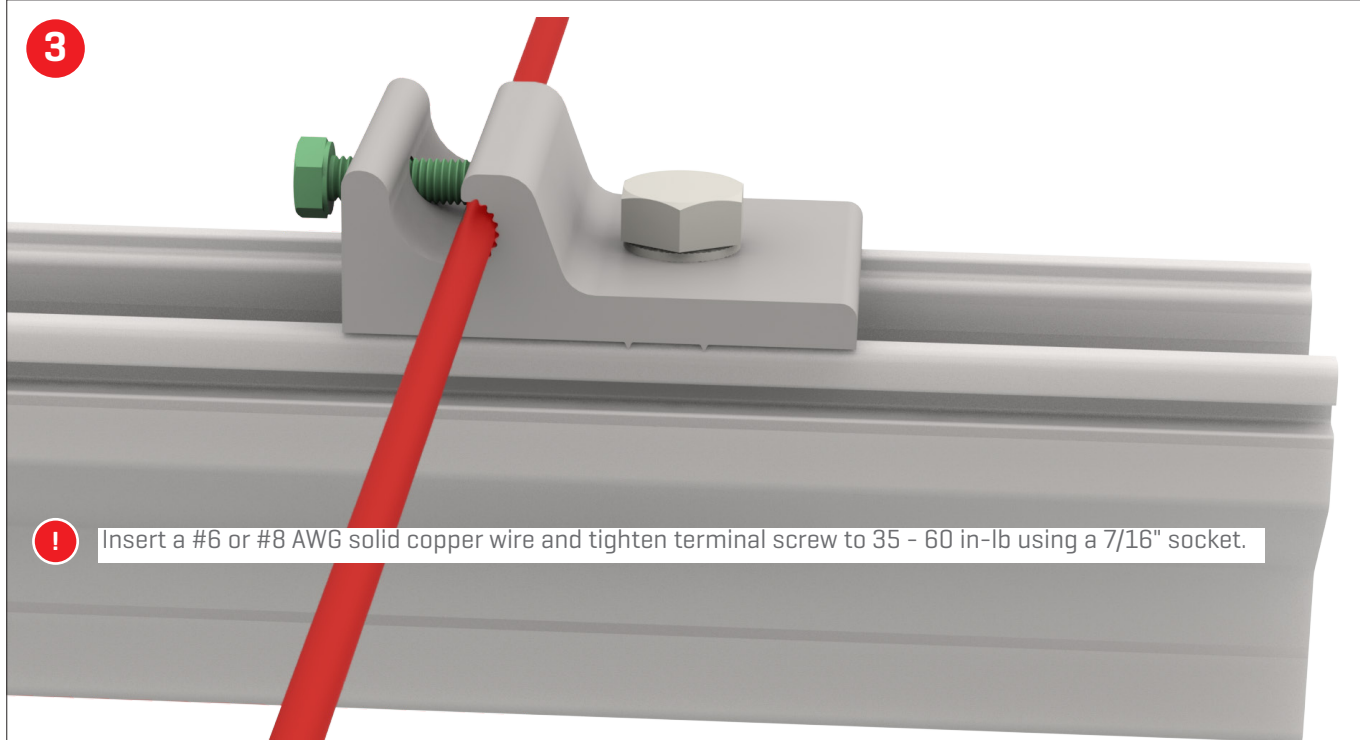
1

! To attach the Everest Ground Lug, insert the MK3 slot nut of the preassembled ground lug into the top channel of the CrossRail. While slightly lifting the plastic tabs, rotate 90 degrees clockwise to engage the MK3 into the channel. Ensure the bonding teeth are perpendicular to the rail channel.

2

! Torque the M8 bolt to 10 ft-lbs using a 13 mm deep socket wrench.

3



Insert a #6 or #8 AWG solid copper wire and tighten terminal screw to 35 - 60 in-lb using a 7/16" socket.