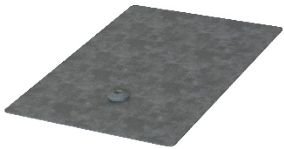


QUICK GUIDE

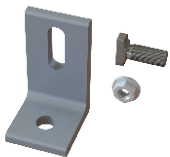
EverFlash eComp + SR Slide Kit



EverFlash eComp, 8x12"

Material: aluminum
Finish: silver, black

Part Number	Description
4000015	EverFlash eComp + SRS Slide Kit, Mill
4000366	EverFlash eComp Kit, Black
4000679	EverFlash eComp Kit, Mill LF, Dark
4000367	EverFlash eComp Kit, Silver
4000027	EverFlash eComp+SR Slide Kit, Dark
4000029	EverFlash eComp+SR Slide, LF Mill,



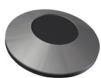
L-Foot Slotted Set

Material: aluminum
Finish: mill, dark

Part Number	Description
4000630	L-Foot Slotted Set, Mill
4000631	L-Foot Slotted Set, Dark

5/16" Sealing Washer

Material: stainless steel, EPDM insert



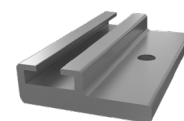
5/16" Lag Bolt SS

Material: stainless steel

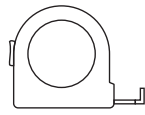
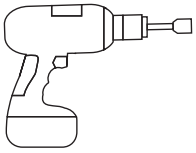


Slider

Material: aluminum



TOOLS REQUIRED



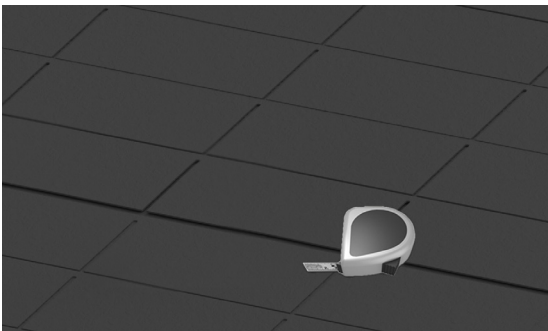
≥ 10 ft



≥ 6,0m

Assembly

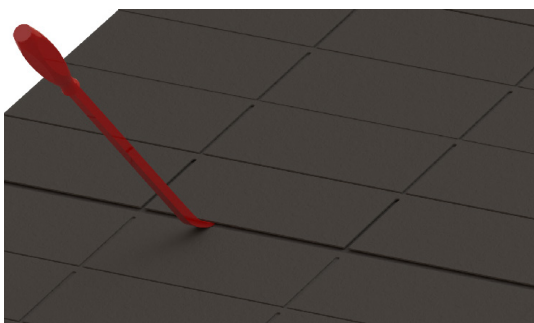
1 LOCATE RAFTERS



Locate the rafters and snap horizontal and vertical lines (measured according to CrossRail Shared Rail Assembly Instructions) to mark the installation position for each EverFlash eComp flashing.

Materials Required: Measuring tape, string line

2 BREAK SEALS



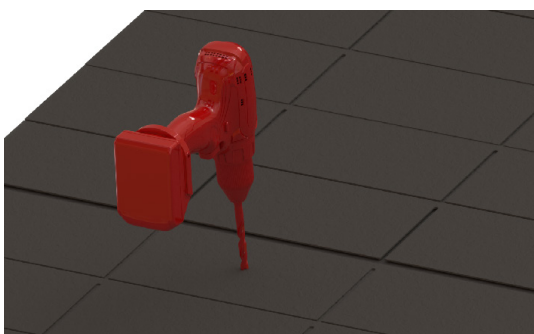
It is important to remove any obstructing nails in the 2nd course of shingles as they can prevent the flashing from extending up under the 3rd course of shingles.

This is required by the roofing manufacturer's instructions and warranties, and the Asphalt Roofing Manufacturer's Association guidelines.

Use roofing bar to break the seals between the 1st and 2nd, and 2nd and 3rd shingle courses. Be sure to remove all nails to allow correct placement of flashing.

Materials Required: Roofing bar

3 DRILL PILOT HOLE



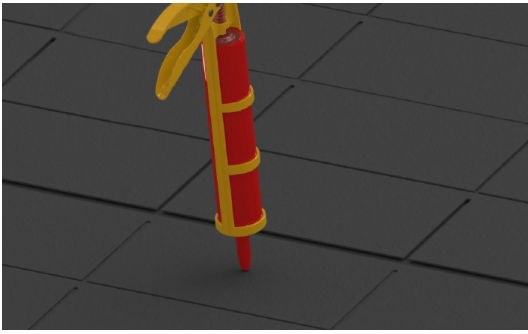
Drill a 3" deep pilot hole by drilling square to the rafter using a 7/32" aircraft extension bit.

If the pilot is severely out of square, the roof sealing washer may not compress consistently and the seal may be compromised.

Materials Required: 7/32" aircraft extension drill bit, drill



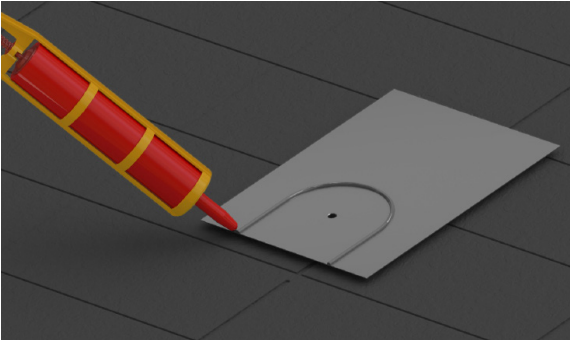
4 SEAL PILOT HOLE



Filling the pilot hole with sealant is a secondary waterproofing step, which is required by the roofing manufacturers.

Materials Required: Appropriate sealant

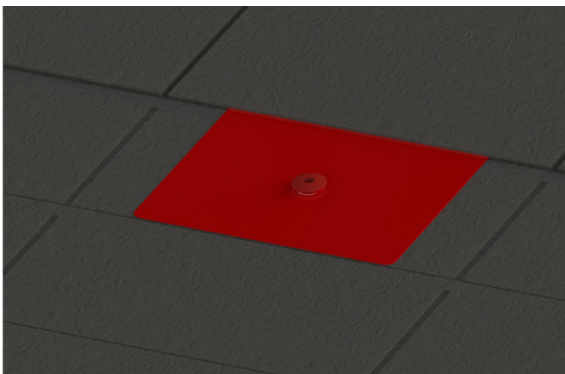
5 OPTIONAL: SEAL FLASHING



Apply an upside-down U-shape bead of sealant to the underside of the flashing before insertion.

Materials Required: EverFlash eComp flashing, appropriate sealant

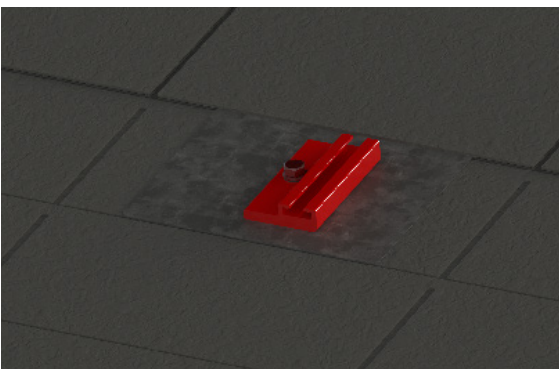
6 INSERT FLASHING



Slide the eComp flashing under the 2nd course of shingles so that the bottom flashing edge does not overhang the butt edge of the shingles. This requirement ensures that the flashing extends up under the 3rd course of shingles and the minimum head-lap is achieved.

Materials Required: EverFlash eComp flashing

7 INSTALL SLIDE KIT



Swivel the Slide Kit to gauge proper torque when driving the lag bolt. Tighten until the Slide Kit stops swiveling easily.

Torque: The range is between 8.3-11.6 ft-lb depending on the type of wood and time of year. If using an impact wrench to install the fasteners, be careful not to over-torque the fastener. You may need to stop and use a ratchet to finish the install.

Note: We recommend the use of the Slide Kit for a CrossRail Shared Rail system to adjust rail alignment during module installation. Refer to CrossRail Shared Rail Assembly Instructions to finish system install.

Materials Required: EverFlash eComp Kit, Slide Kit, drill, 1/2" socket, torque wrench