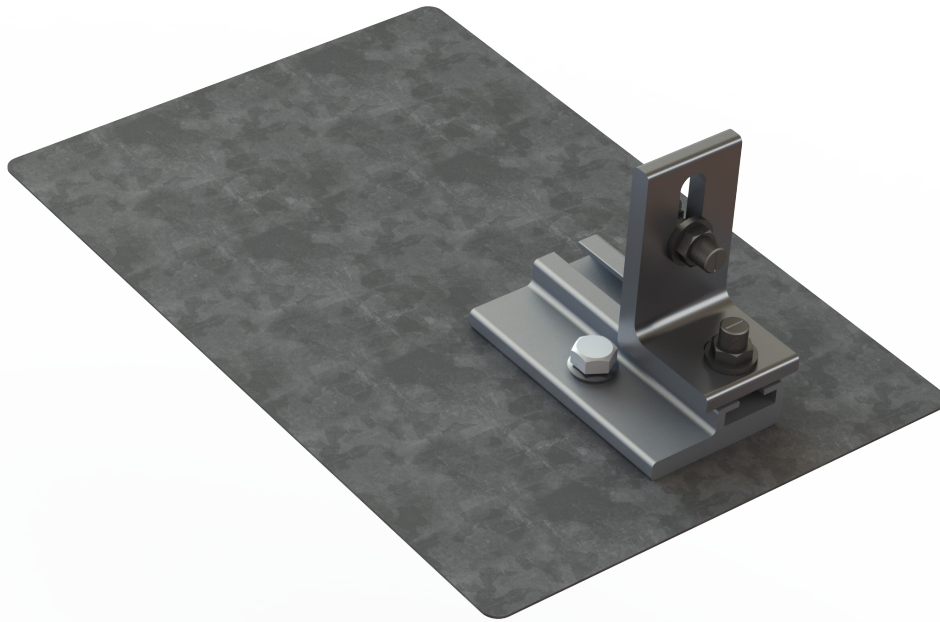




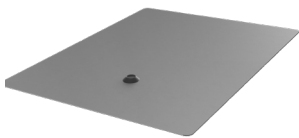
EverFlash eComp + SR Slide Kit



- ▶ High quality, patented design to ensure watertight seal
- ▶ Included as part of a UL 2703 Listed System
- ▶ Easy installation, can be retrofitted without removing shingles
- ▶ Meets or exceeds all known building codes



Components



EverFlash eComp, 8x12
Material: aluminum
Finish: silver, black



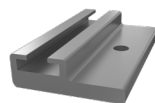
L-Foot and Hardware
Material: aluminum
Finish: mill, dark



5/16" Sealing Washer
Material: stainless steel, EPDM insert



5/16" Lag Bolt
Material: stainless steel



Short Slider
Material: aluminum
Finish: mill, dark