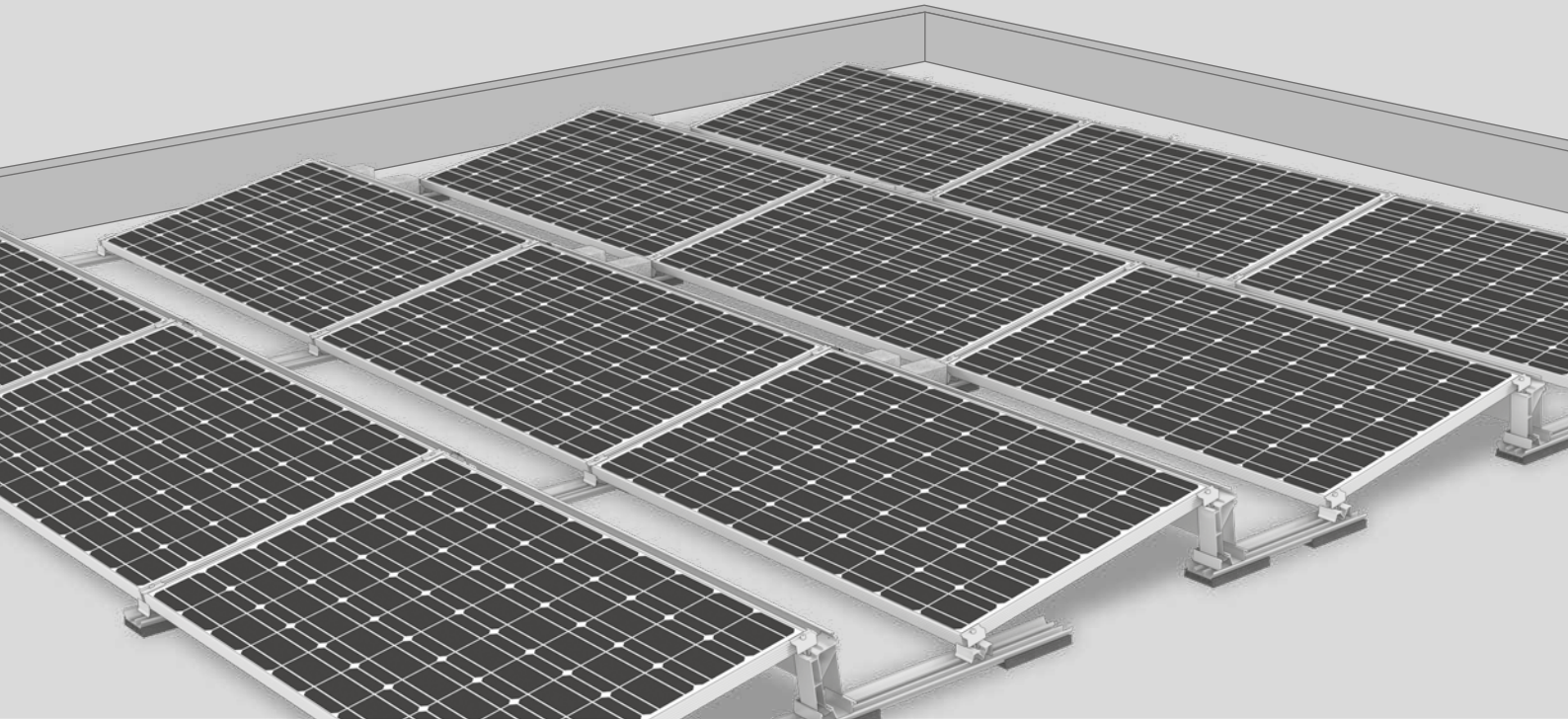




S-Dome V 10° System **New**

The single-sided elevation – generation V

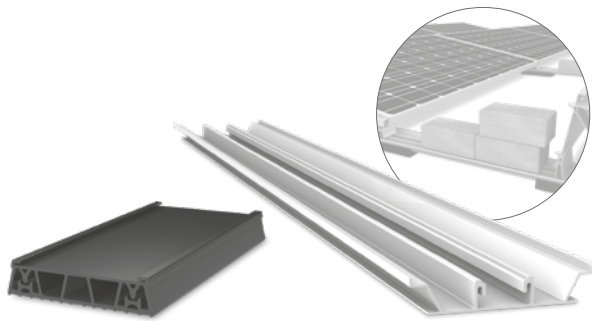


Now optimised and improved:

- ▶ S-Dome V with a modified geometry for the improved absorption of tolerances
- ▶ Short mounting rails with an integrated ballast tray
- ▶ Flexible EPDM support pad:
 - Compensates for tolerances
 - Better friction coefficient reduces ballasting
- ▶ Lower transport volume reduces logistics costs
- ▶ Aerodynamically optimised based on wind tunnel tests

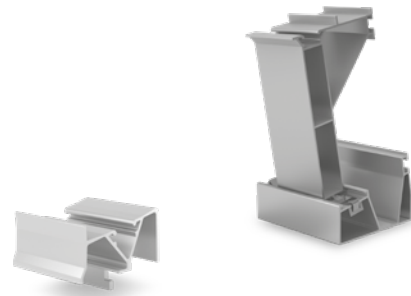


Components



Mat V + Rail

- ▶ The flexible Mat V EPDM support pad can absorb tolerances and protects the roof cover
- ▶ The mounting rail is connected to the Mat V with a simple sliding motion and has an integrated ballast tray.



Dome V SD and Peaks with Basis

- ▶ Modified geometry to absorb tolerances and material-optimised
- ▶ Only one screw connection
- ▶ Lower volume and weight

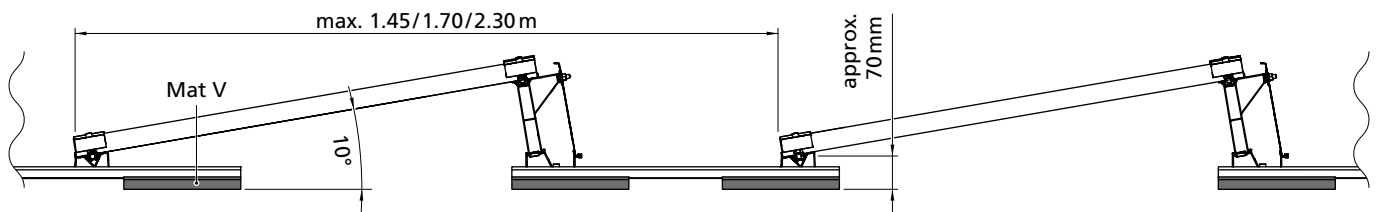
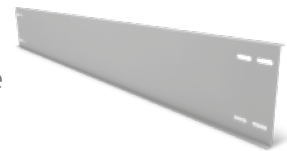
Universal module clamp: MiniClamp MC/EC

- ▶ Clamping range 30- 50 mm
- ▶ Compatible with the S-Rock and MiniRail System



Windbreaker

Wind deflection on the reverse side



Technical data

S-Dome V	
Scope of application	Flat roofs with a foil or bitumen roof cover and laid on concrete or gravel
Fastening type/roof fixture	Stable, if necessary with ballasting, no roof penetration
Requirements	<ul style="list-style-type: none"> ▶ Permissible module dimensions (L×W×H): 1386 - 2067 × 950 - 1100 × 30 - 50 mm ▶ Minimum system size: 2 modules
Technical specifications	<ul style="list-style-type: none"> ▶ Thermal separation after a maximum of 15.5 m ▶ Minimum distance to the edge of the roof 600 mm
Inclination angle	10°
Material	<ul style="list-style-type: none"> ▶ Mounting rails, Peak, Basic, SD, Windbreaker and MiniClamps: Aluminium EN AW-6063 T66 ▶ Mat V protective mat: EPDM ▶ Small parts: stainless steel (1.4301) A2-70