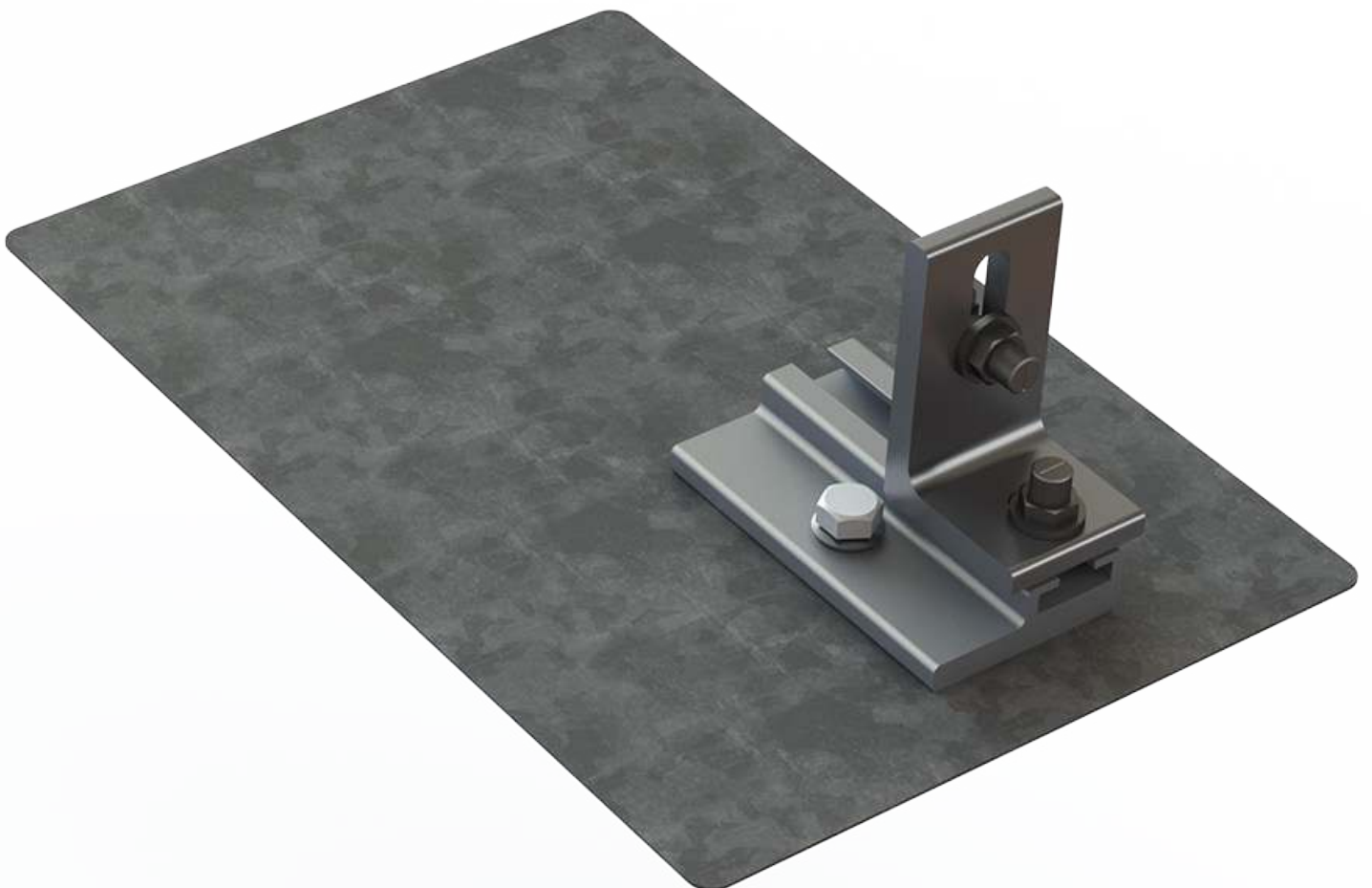


EverFlash eComp + SR Slide Kit

QUICK GUIDE

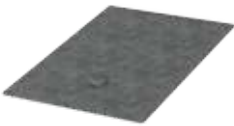


Components

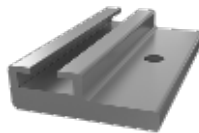


Part Number	Description
4000366	EverFlash eComp Kit, Dark
4000367	EverFlash eComp Kit, Mill
4000679	EverFlash eComp Kit, Mill LF, Dark Flash

Kit includes:



EverFlash eComp, 8x12"
Material: aluminum
Finish: silver, black



Slide Bracket
Material: aluminum
Finish: silver, black



L-Foot
Material: aluminum
Finish: silver, black

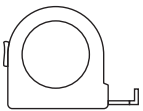


5/16" Lag Screw w/ Sealing Washer
Material: stainless steel, EPDM insert



T-Bolt & Hex Nut
Material: stainless steel

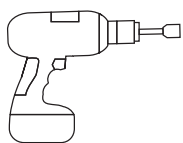
Tools overview



≥ 10 ft



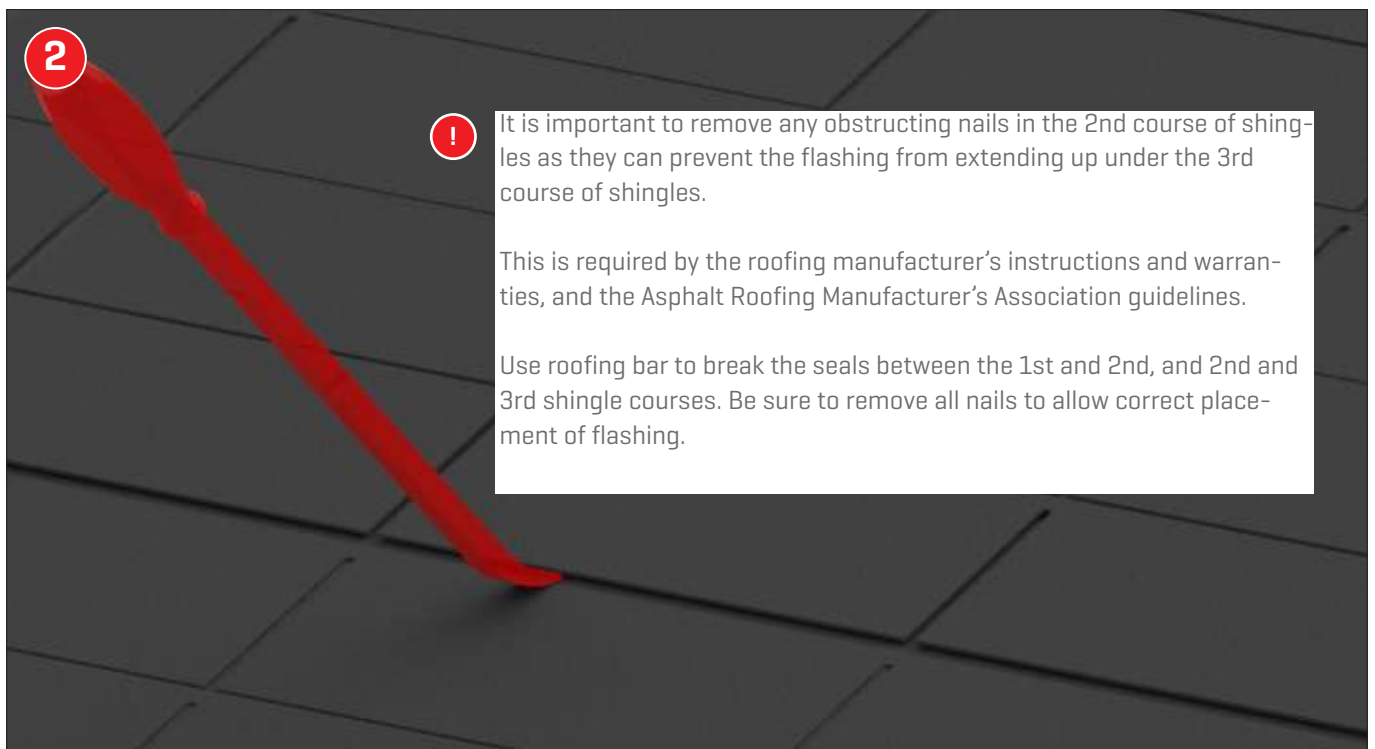
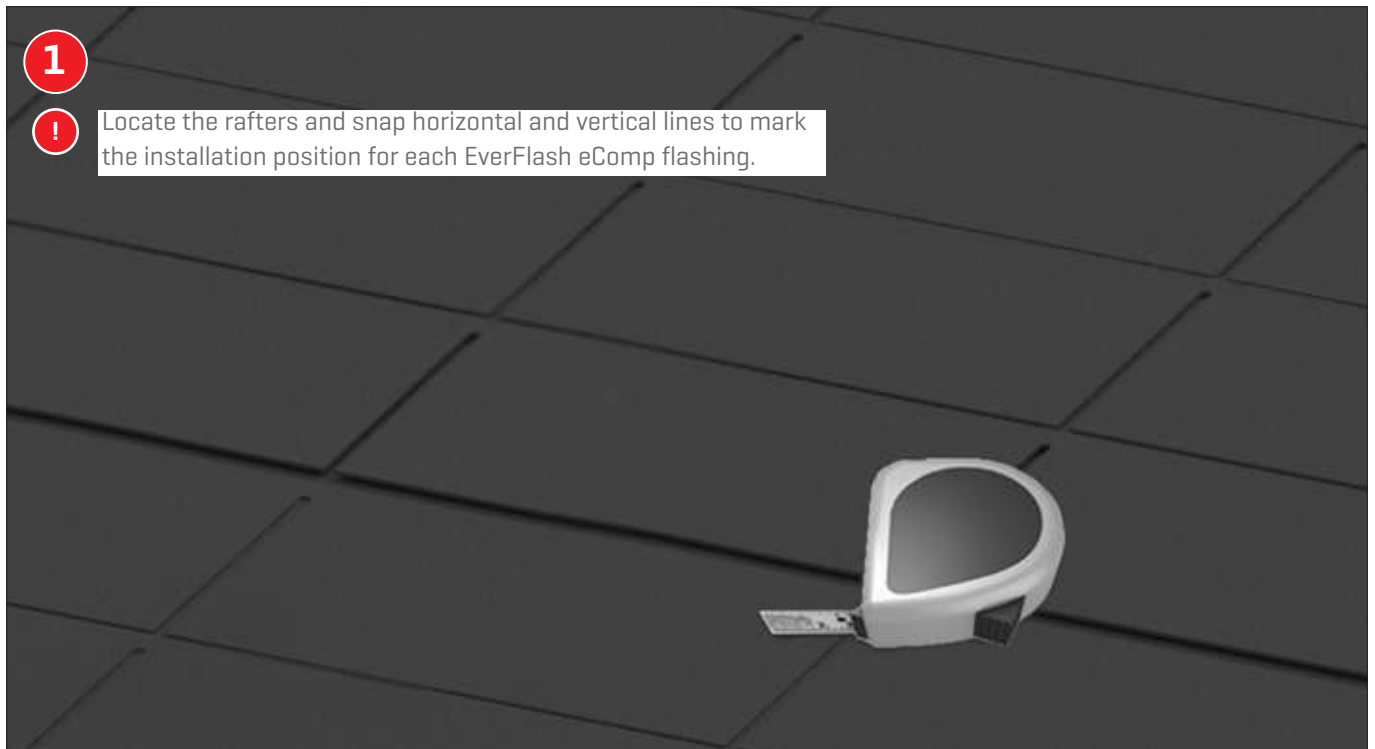
≥ 6,0 m



13 mm dep socket
▶ Torque 10 ft-lbs



Assembly



3



Drill a 3" deep pilot hole by drilling square to the rafter using a 7/32" aircraft extension bit. If the pilot is severely out of square, the roof sealing washer may not compress consistently and the seal may be compromised.



4



Filling the pilot hole with sealant is a secondary waterproofing step, which is required by the roofing manufacturers.





7



Swivel the Slide Kit to gauge proper torque when driving the lag bolt. Tighten until the Slide Kit stops swiveling easily.

The torque range is between 8.3-11.6 ft-lb depending on the type of wood and time of year. If using an impact wrench to install the fasteners, be careful not to over-torque the fastener. You may need to stop and use a ratchet to finish the install.



8



Insert T-Bolt through bottom L-Foot slot and into the Slide Bracket. Adjust the L-Foot to your desired position. Turn the T-Bolt clockwise ensuring that the mark at the end of the shaft is vertical, indicating proper alignment. Tighten to 25.8 ft-lbs [35 Nm]. To attach the CrossRail, repeat the T-Bolt install process by inserting the T-Bolt through the top L-Foot slot and into the side channel of CrossRail.

