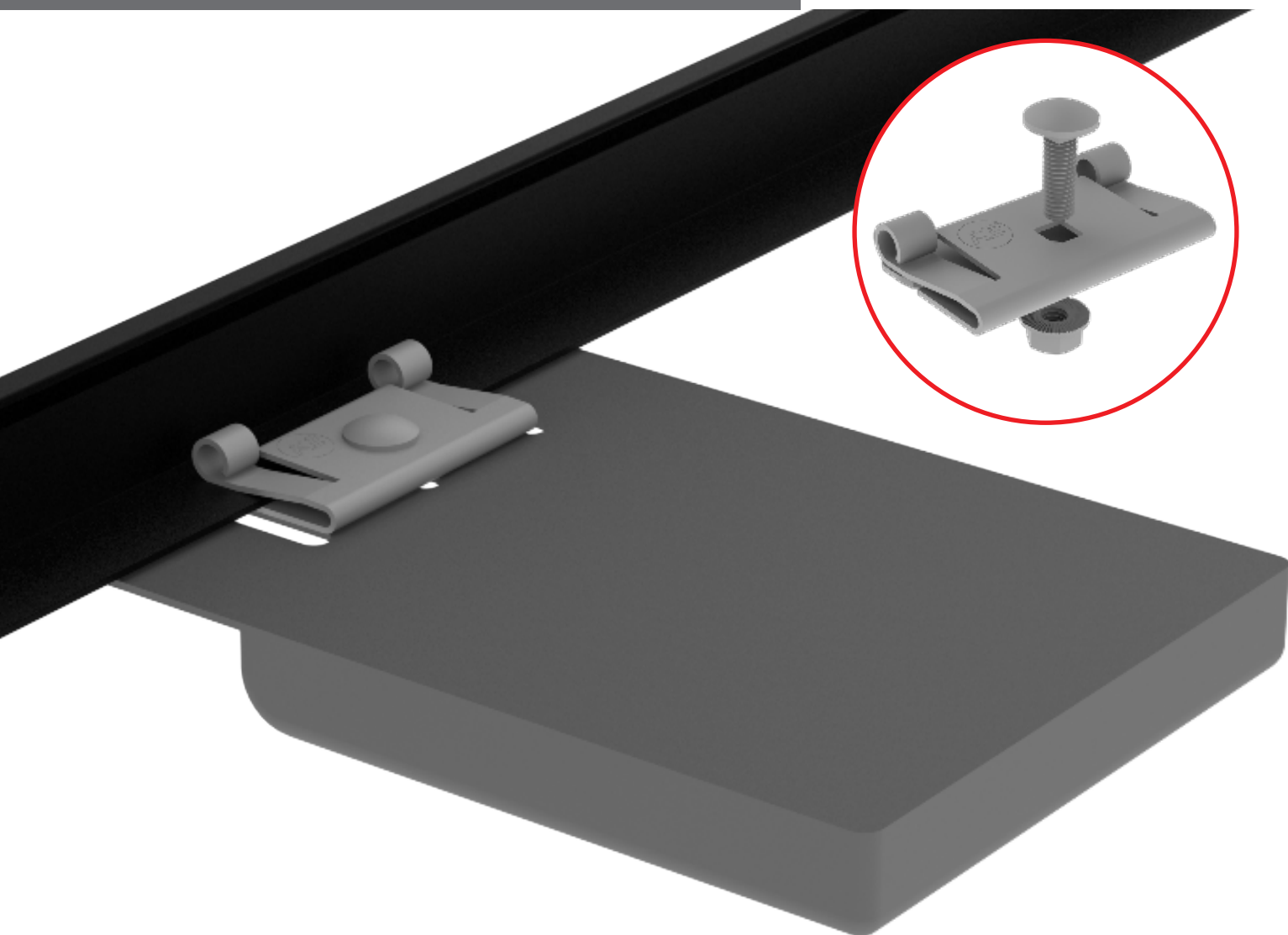


MLPE Module Frame Mount Kit

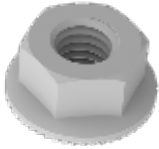
QUICK GUIDE



Components

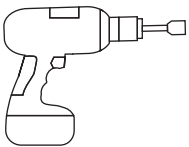


Part Number	Description	Part Number	Description
4000082	Universal Module Frame Mount	4000138	Mushroom Head Bolt, M8-1.25*25mm

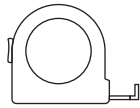


Part Number	Description
4000043	Hex Flange Nut, Serrated, SS M8

Tool Requirements



Drill




Tape Measure
≥5mts




10-50 ft-lb
[6 - 35Nm]

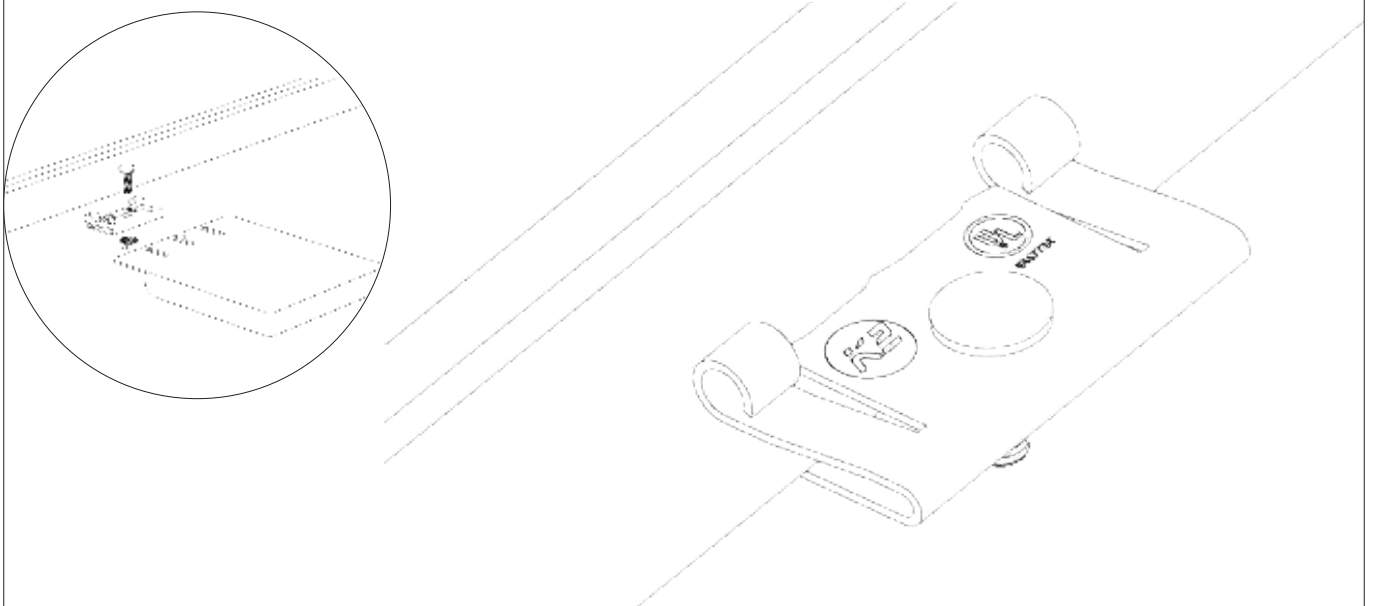


13mm Socket

- 1**  Locate the area under the module where you are going to install the Micro Inverter / Optimizer. Measure and mark the location.



- 2**  Insert the MLPE Module Frame Mount Kit onto the inside flange of the module frame where you made the mark in step 1. Tighten the M8 screw and make sure the screw touches the flange of the module frame.



- 3** **!** Install the Micro Inverter / Optimizer onto the screw then tighten the M8 nut underneath so that elements are firmly connected. Seeee image 3.2 for reference. Using the torque wrenth, tighten the M8 nut to 15 ft-lbs.

! 15 ft-lb
20..3Nm 