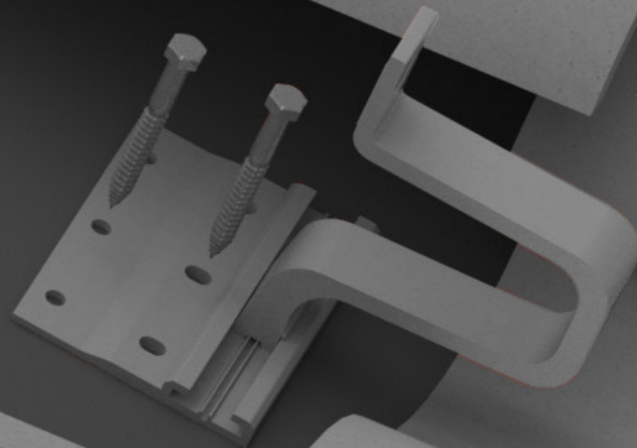
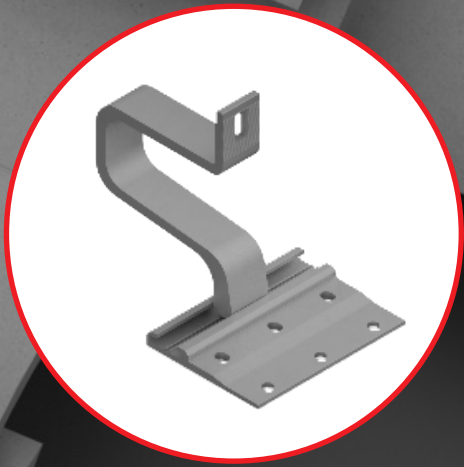


We support PV systems
Formerly Everest Solar Systems 



SingleHook

QUICK GUIDE



Components

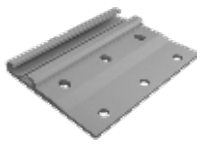


Part Number	Description
4000521	SingleHook 5.5" Base TB&Nut Set, No Lags

Kit includes:



SingleHook Top
Material: aluminum
Finish: mill

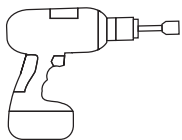
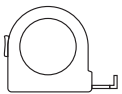


SingleHook Base
Material: aluminum
Finish: mill



T-Bolt & Hex Nut
Material: stainless steel

Tools overview



Torque wrench
▶ 10-50 ft-lbs



13 mm dep socket
▶ Torque 10 ft-lbs

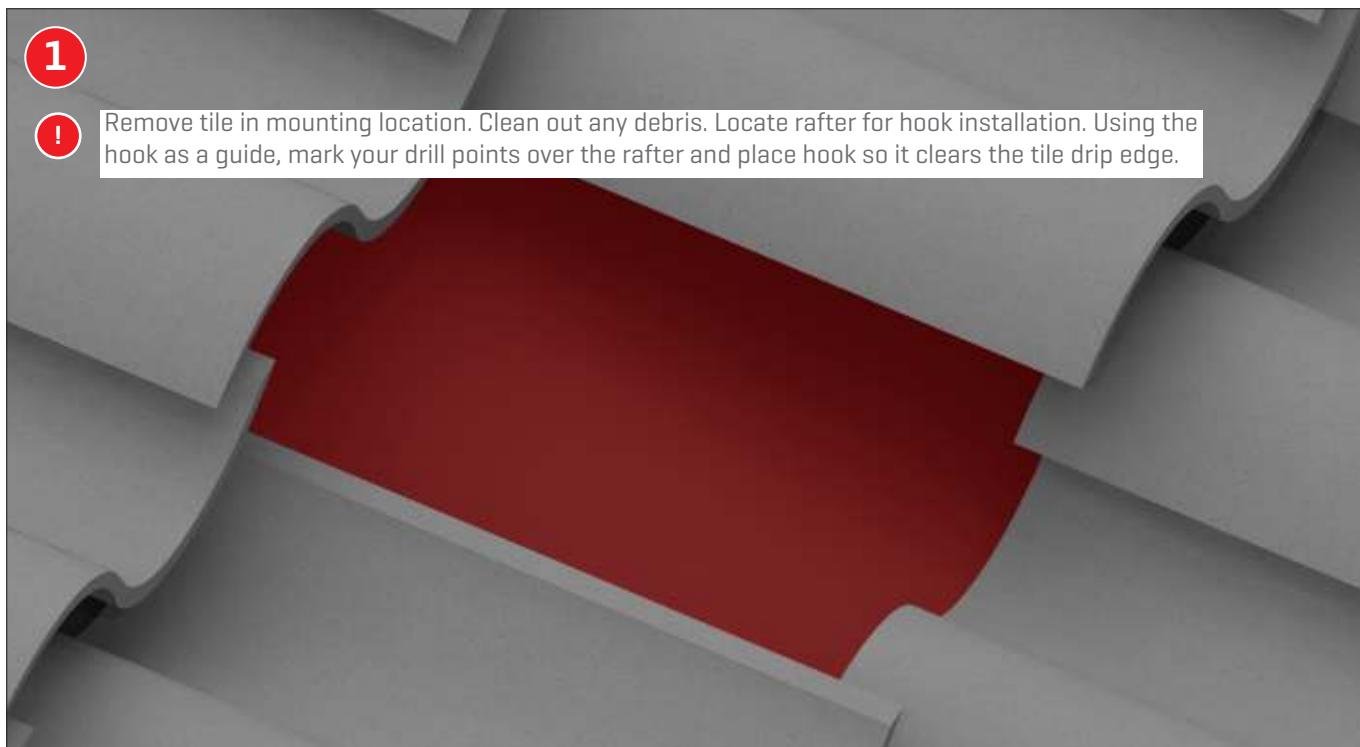
Assembly



1



Remove tile in mounting location. Clean out any debris. Locate rafter for hook installation. Using the hook as a guide, mark your drill points over the rafter and place hook so it clears the tile drip edge.



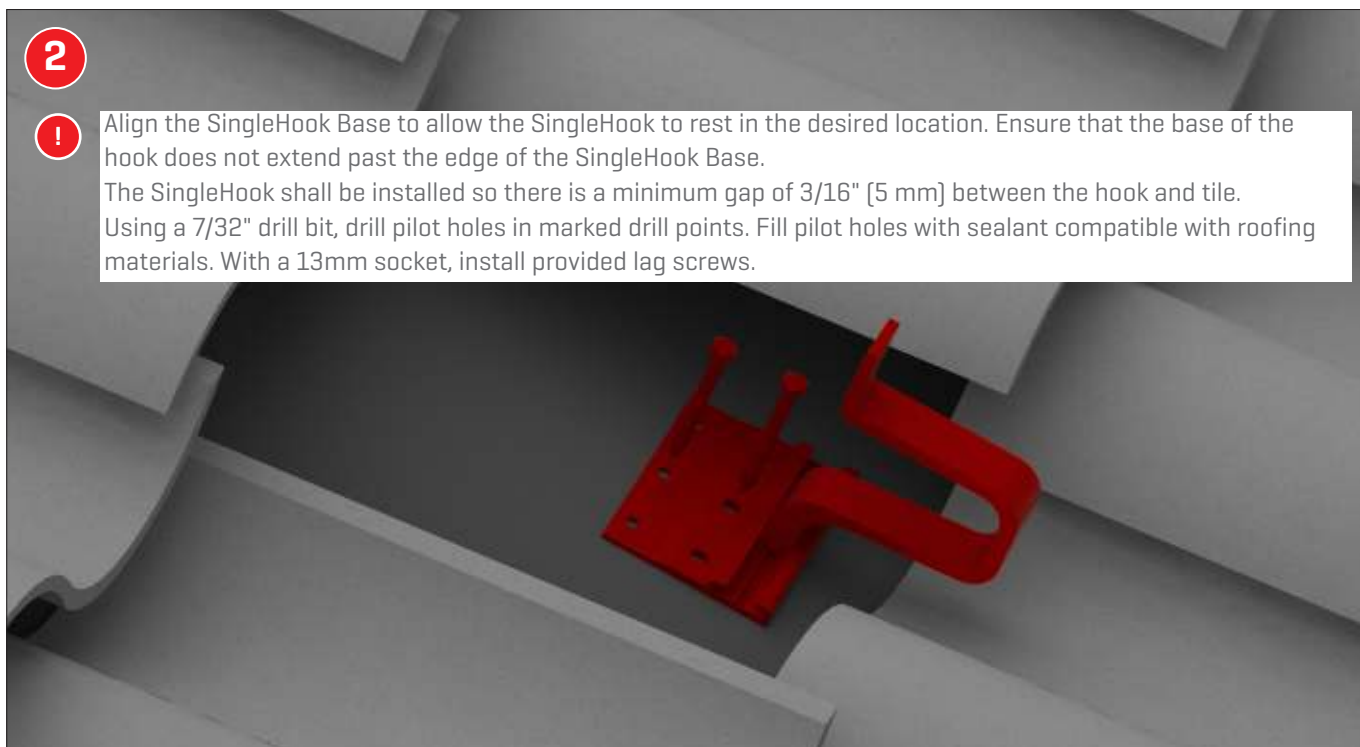
2



Align the SingleHook Base to allow the SingleHook to rest in the desired location. Ensure that the base of the hook does not extend past the edge of the SingleHook Base.

The SingleHook shall be installed so there is a minimum gap of 3/16" [5 mm] between the hook and tile.

Using a 7/32" drill bit, drill pilot holes in marked drill points. Fill pilot holes with sealant compatible with roofing materials. With a 13mm socket, install provided lag screws.



3



Replace tile or install replacement tile flashing.

Insert the T-Bolt through the slot in the Flat Tile Hook and into the side channel of CrossRail. Turn the T-Bolt clockwise ensuring that the mark at the end of the shaft is vertical, indicating proper alignment. Attach the serrated flange nut and tighten to 26 ft-lbs [35 Nm]. Double check that the alignment marking on the end of the T-Bolt shaft is vertical to ensure it is properly engaged. Refer to CrossRail Assembly Instructions for more detail on proper rail installation.

Proper T-Bolt Alignment

Incorrect

Correct

