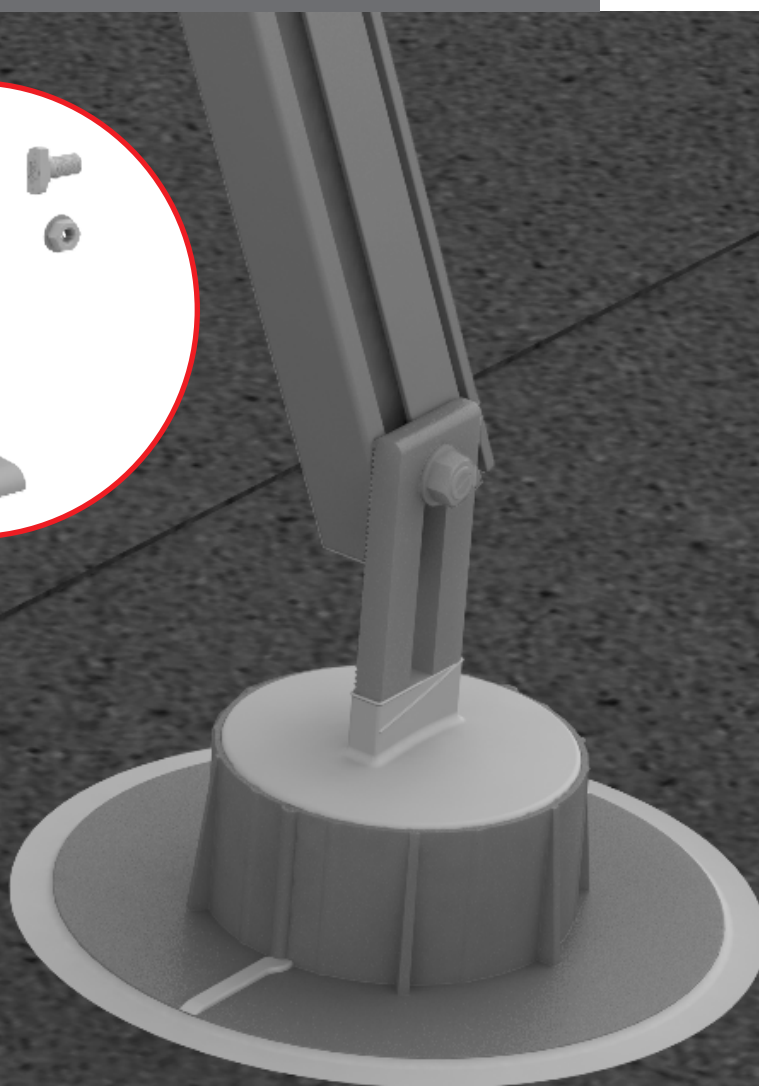


T-Foot X

QUICK GUIDE



Components



Part Number	Description
4000080	T-Foot X, Set, Mill

Kit includes:



T-Foot
Material: aluminum



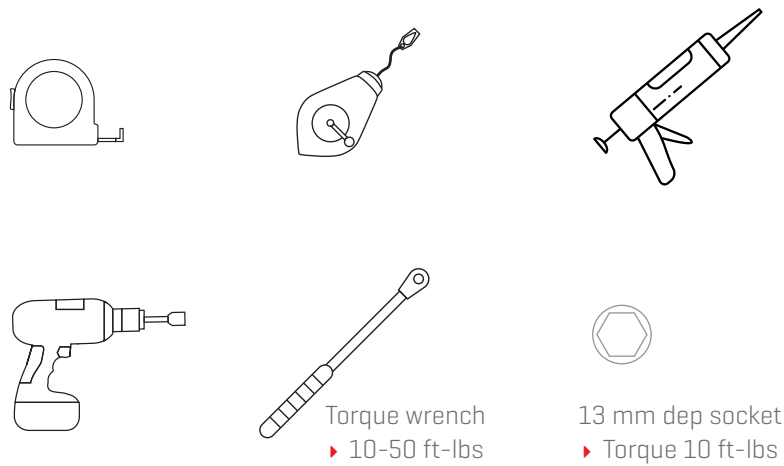
T-Bolt and Hex Nut
Material: stainless steel

Optional components:



ChemLink 4" E-Curb Kit
E-Curb exterior rings
M-1 structural adhesive/sealant
1-Part moisture cure pourable sealant

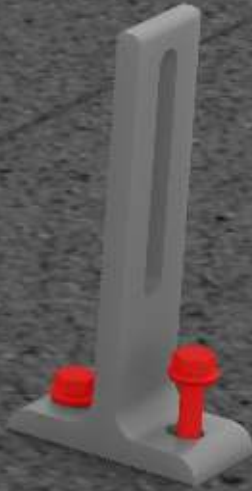
Tools overview



1



Choose the appropriate fasteners for your structural attachment. If needed, drill your pilot holes, seal holes, and secure the T-Foot X to the roof. Surround the lag screws with an appropriate sealant compatible with the sealing options you choose. (Below are options for the ChemLink E-Curb. Follow manufacturer's official installation instructions for best practices). For other waterproofing options contact the roofer of record and/or a K2 technical rep for support.

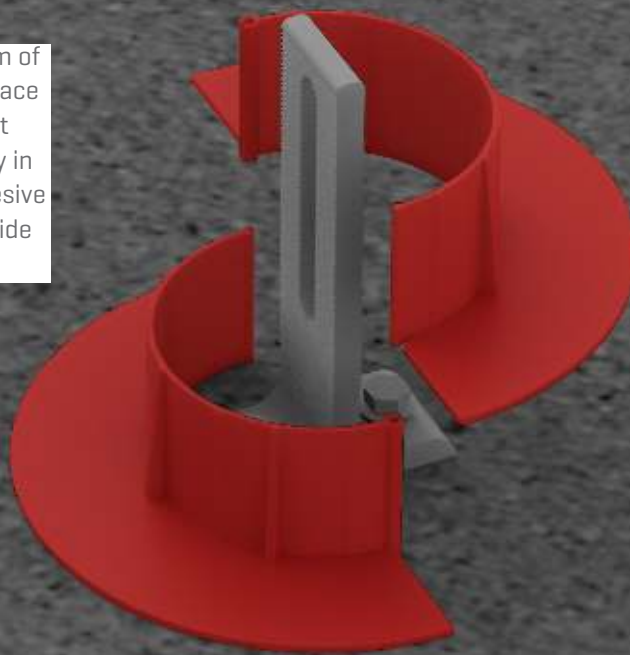


2a

Optional: Install ChemLink E-Curb



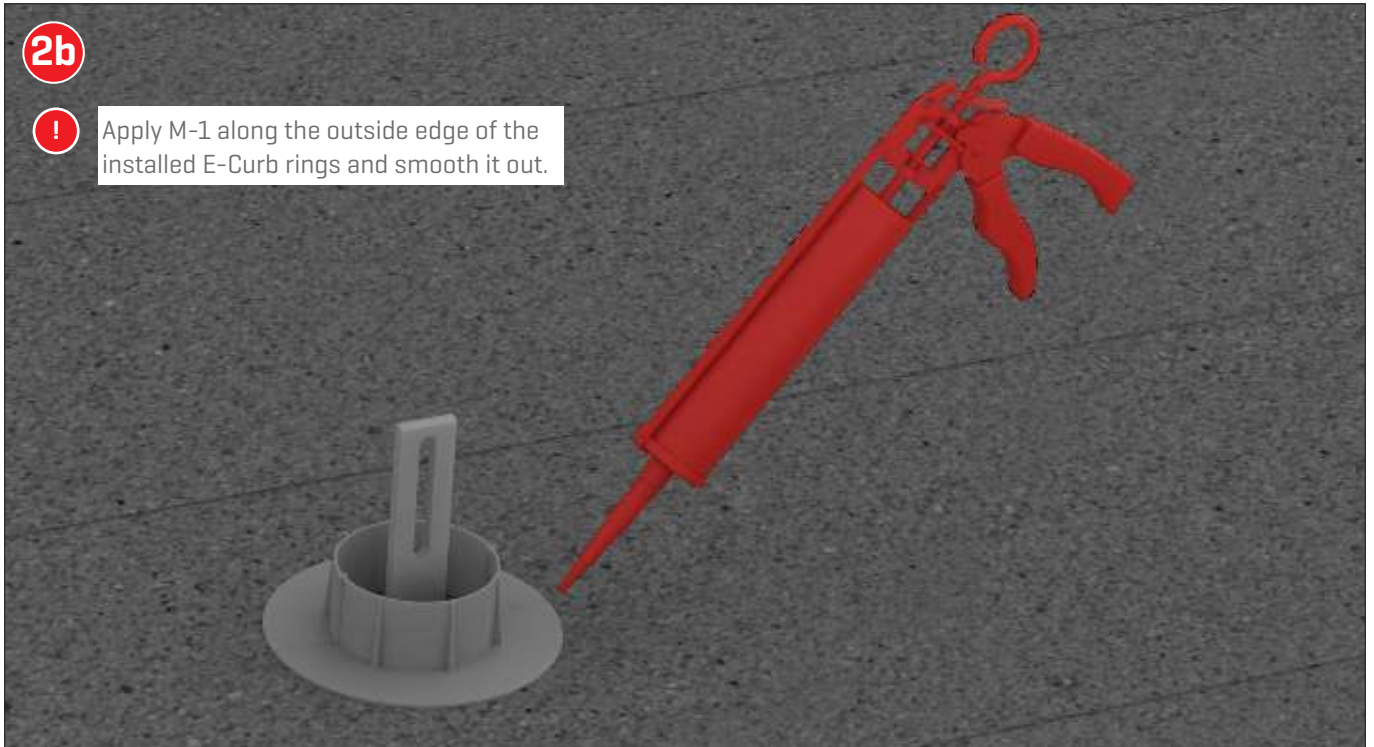
Apply M-1 to the bottom of the E-Curb rings and place them around the T-Foot X. Press the rings firmly in place until excess adhesive extrudes from the outside edges.



2b



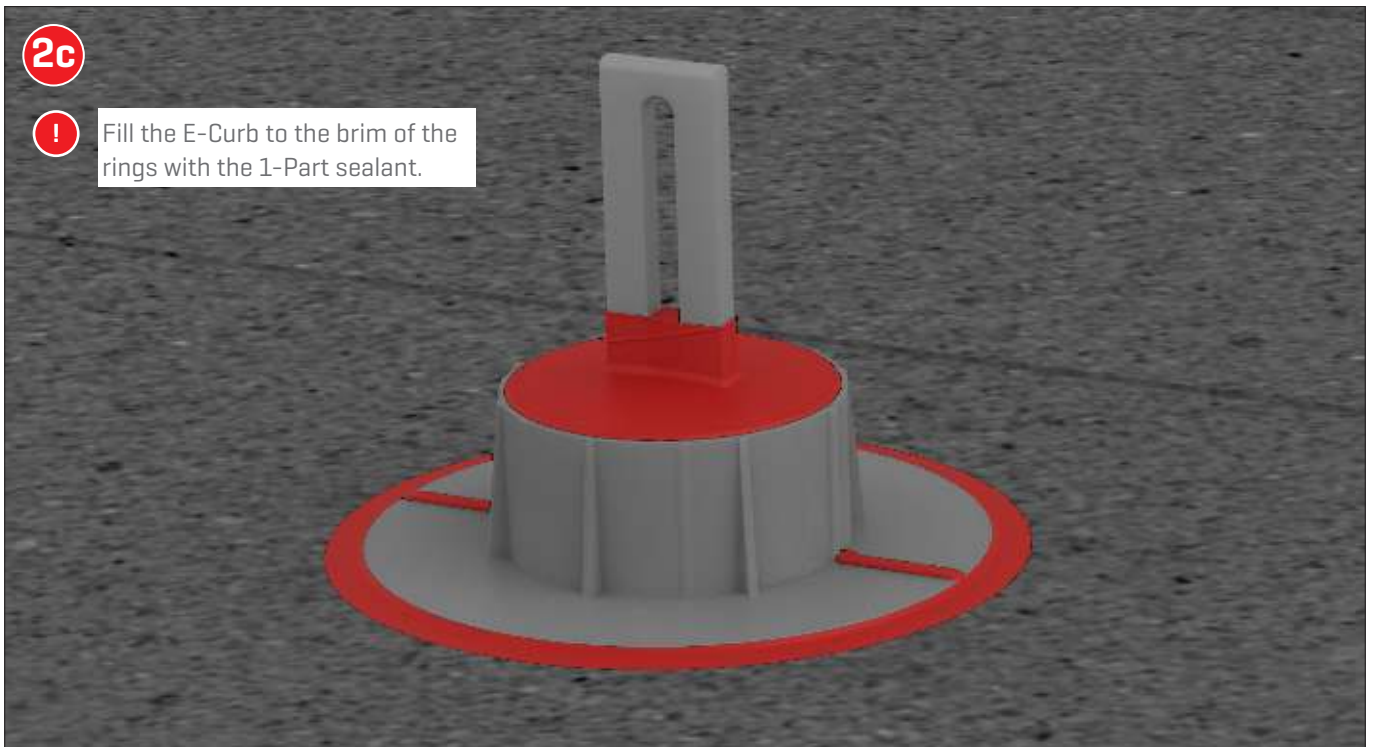
Apply M-1 along the outside edge of the installed E-Curb rings and smooth it out.



2c



Fill the E-Curb to the brim of the rings with the 1-Part sealant.



3



Insert the T-Bolt through the T-Foot X slot and into the side channel of CrossRail. Turn the T-Bolt clockwise ensuring that the mark at the end of the shaft is vertical, indicating proper alignment. Using a 13 mm socket, tighten to 25.8 ft-lb [35 Nm].

Make sure that the top of the CrossRail is located above the top of the T-Foot X.

Double check that the alignment marking on the end of the T-Bolt shaft is vertical, indicating proper alignment.

