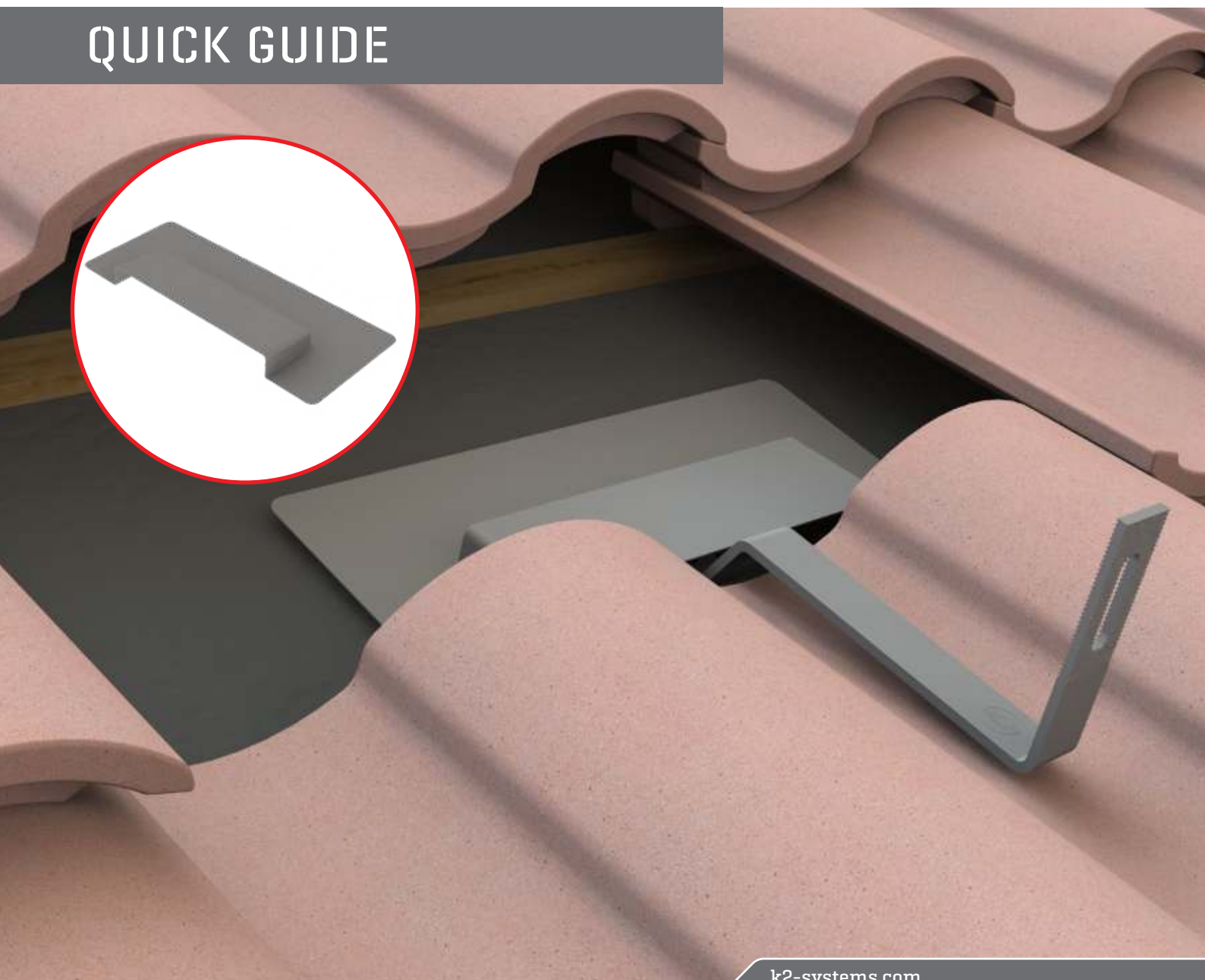
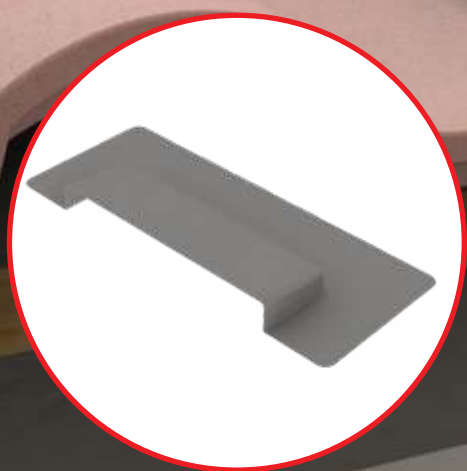


K2 Tile Hood

QUICK GUIDE

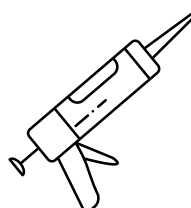
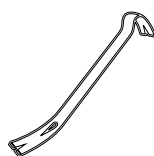
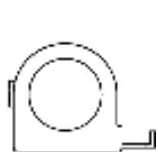


Components



Part Number	Description
4000008	K2 Tile Hood

Tools overview



13 mm socket
▶ Torque 10 ft-lbs

Related Products



Part Number	Description
4000141	Flat Tile Hook X, Kit
4000141-B	Flat Tile Hook X Kit, w/K2 EverSeal



Part Number	Description
4000140	Universal Standard Hook, 9" Base, Kit
4000140-B	USH, 9", Base Kit, w/K2 EverSeal



Part Number	Description
4000142	Universal Standard Hook+2, 5.5" Base Kit
4000142-B	USH +2, 5.5" Base Kit, w/K2 EverSeal



Part Number	Description
4000130	EverFlash Flat Tile-R, Mill

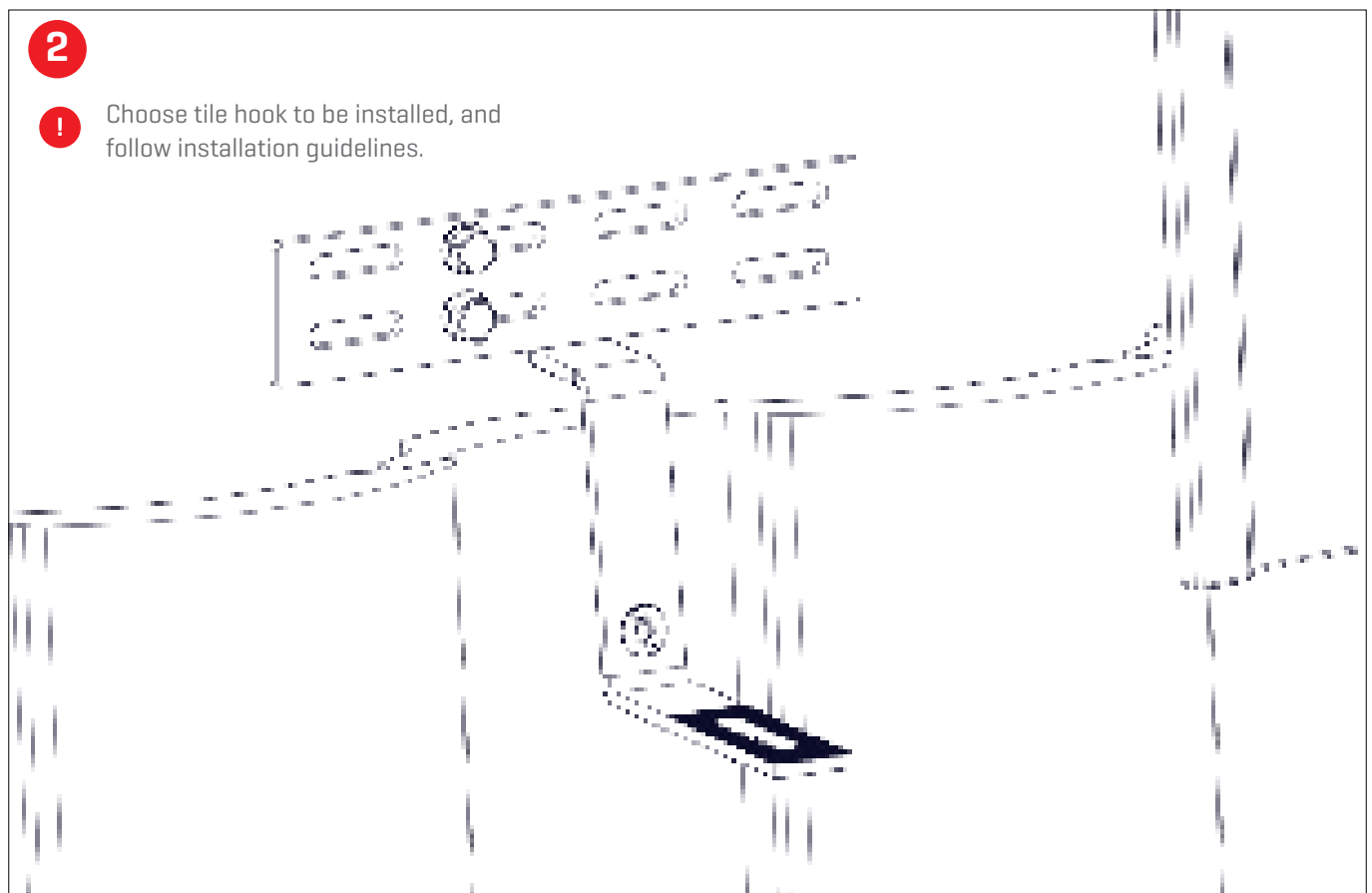
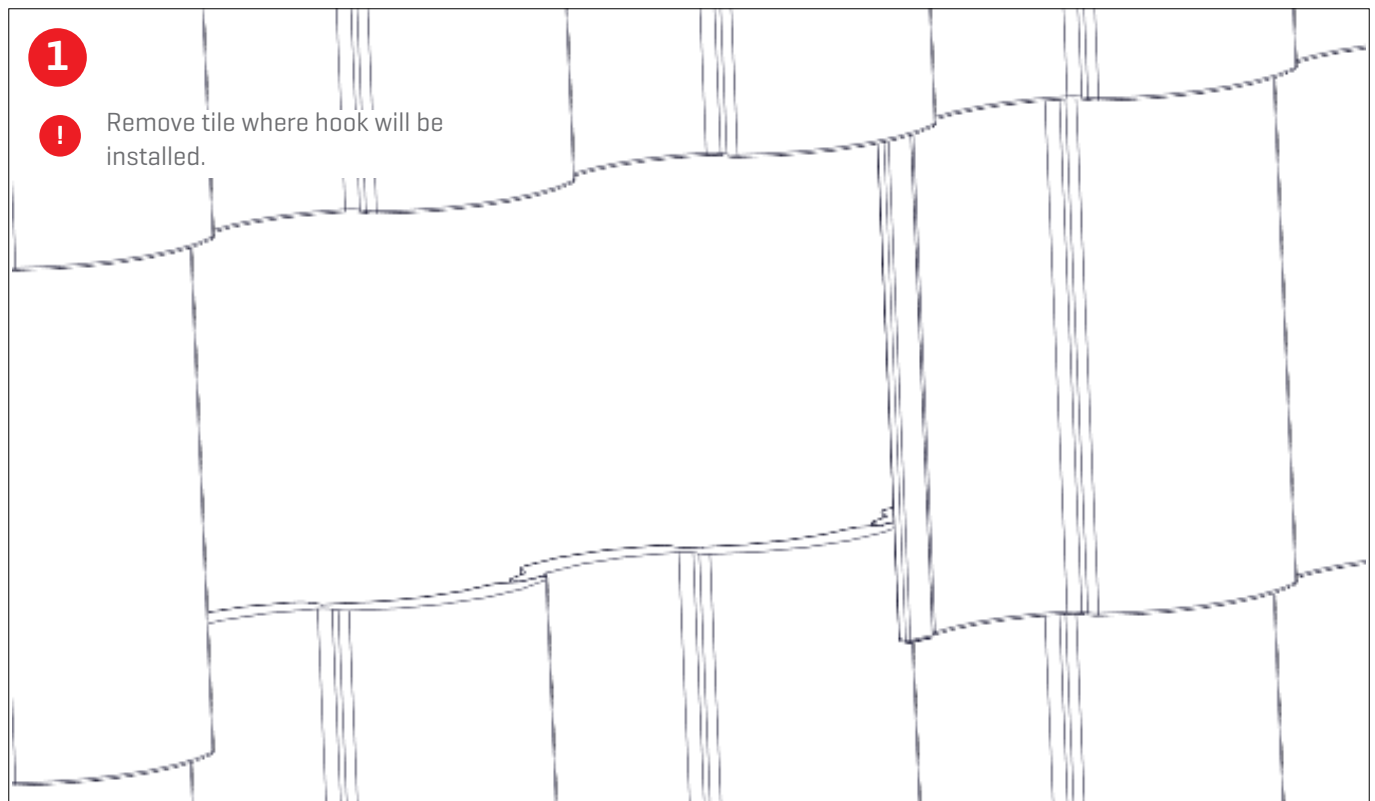


Part Number	Description
4000131	EverFlash S Tile-R, Mill



Part Number	Description
4000132	EverFlash W Tile-R, Mill

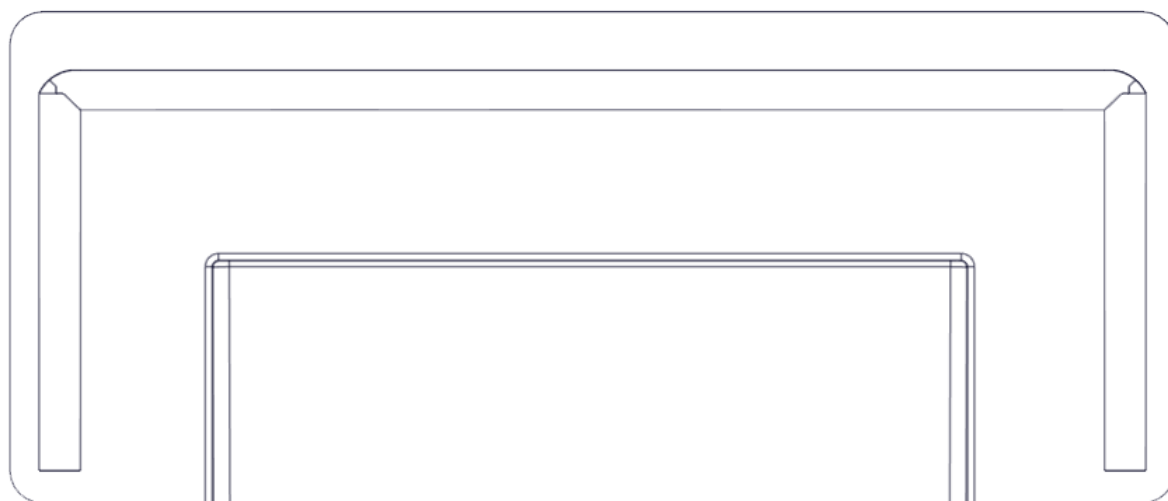
Assembly



4



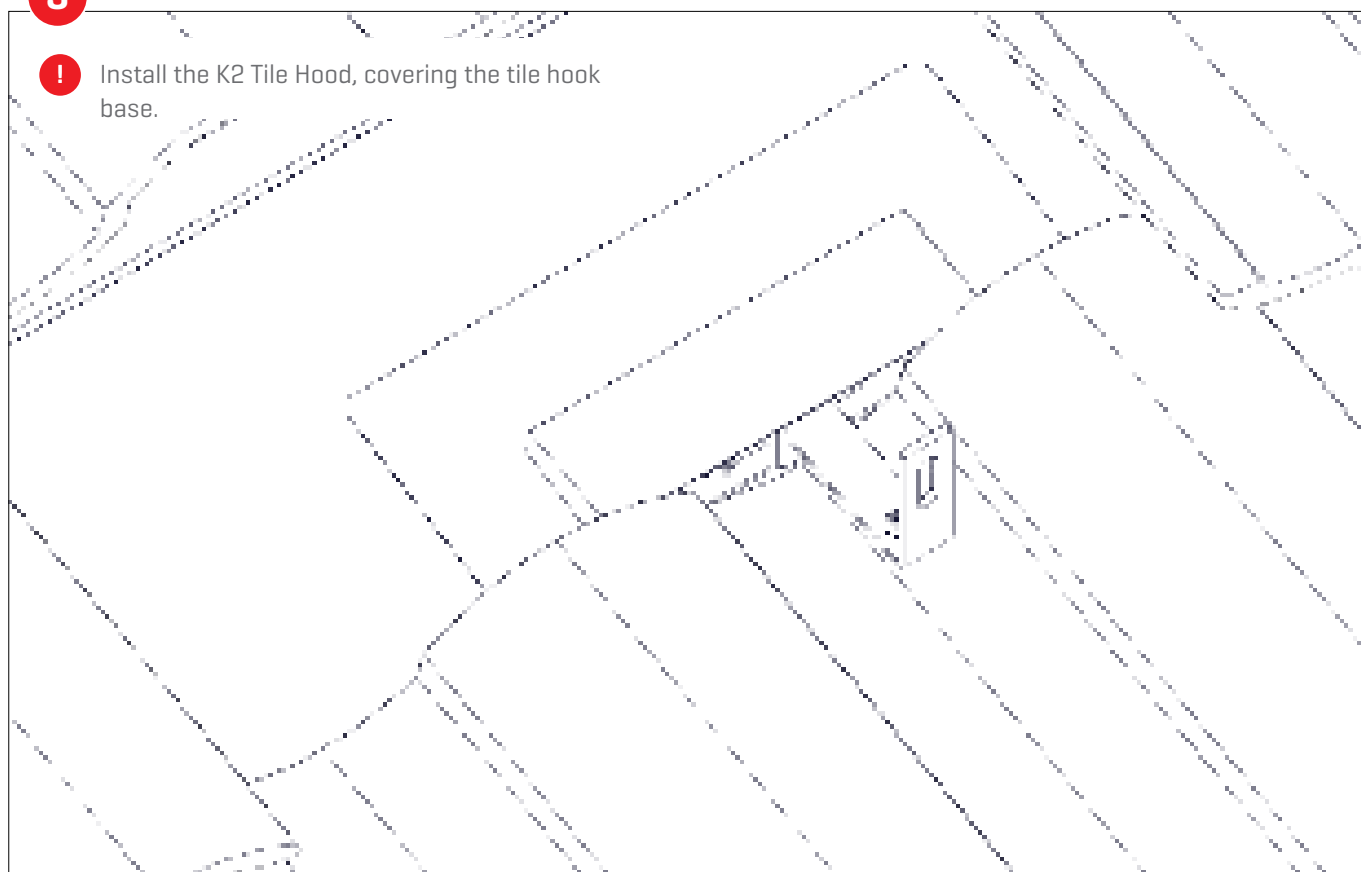
Apply a U-shape bead of sealant on the backside of the tile hood flashing.



5



Install the K2 Tile Hood, covering the tile hook base.



- ! Follow tile roofing best practices and local code requirements. for underlayment water proofing. Common methods include 3 coursing with roofing mastic or felt paper overlapping.

