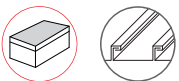


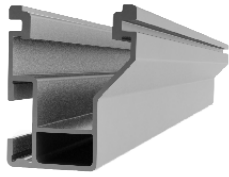
Sistema Tilt Up Multi-Raised

PRODUCT SHEET

- ▶ Sistema de alta calidad con ingeniería global, optimizado para instalación residencial y comercial.
- ▶ Sistema inclinado que permite elevar la pata delantera hasta 50cm con orientación al sur.
- ▶ El equipo de montaje Everest MK3 simplifica las instalaciones de módulos en una manera rápida, fácil, y segura.
- ▶ L-Foot proporciona ajuste y compatibilidad con los tipos de techos comunes.
- ▶ Validación estructural de acuerdo a la norma ASCE7-10.
- ▶ La instalación rápida con cantidad mínima de componentes resulta un bajo costo total de instalación.
- ▶ Flexible a varios ángulos de inclinación y prediseñado para inclinaciones de 7-25 grados.
- ▶ Un solo tipo de riel para todo el sistema, incluyendo los tirantes, disminuyendo el desperdicio de material.

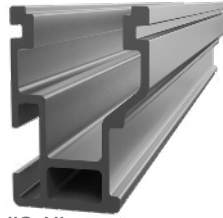


Componentes



CrossRail 48-X

| Part Number | Descripción |
|-------------|-------------------------------|
| 4000674 | CrossRail 48-X, 4.22mts, Mill |
| 4000671 | CrossRail 48-X, 4.27mts, Mill |



CrossRail 48-XL

| Part Number | Descripción |
|-------------|--------------------------------|
| 4000040 | CrossRail 48-XL, 4.22mts, Mill |



CrossRail Mid Clamp

| Part Number | Descripción |
|-------------|-----------------------|
| 4000429 | CR MD Silver, 30-47mm |



CrossRail Mid Clamp

| Part Number | Descripción |
|-------------|---------------------------------|
| 4000601-H | CR MC Silver, 30-47mm, 13mm Hex |
| 4000688-H | SR MC Silver, 30-50mm, 13mm Hex |
| 4000689-H | SR MC Silver, 30-50mm, 13mm Hex |



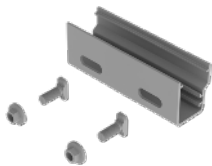
CrossRail End Clamp

| Part Number | Descripción |
|-------------|----------------------------------|
| 4000429 | CR EC Silver 30-50mm, SR 30-45mm |
| 4000430 | CR EC Dark 30-50mm, SR 30-45mm |
| 4000003 | SR EC Silver 46-50mm |
| 4000004 | SR EC Dark 46-50mm |



Yeti Clamp

| Part Number | Descripción |
|-------------|---------------------------------------|
| 4000050-H | Yeti Hidden EC for CR, Mill, 13mm Hex |



CrossRail Rail Connector

| Part Number | Descripción |
|-------------|--|
| 4000051 | Rail Connector CR 44-X, Set, Mill |
| 4000385 | RailConn CR48-X,48-XL Struct Set, Mill |



Climber Set

| Part Number | Descripción |
|-------------|--|
| 4006042 | CrossRail Climber Set w/Hole |
| 4006042-H | CR 48-X/48-XL Climber Set w/Hole, 13mm |
| 4006043 | CR 44-X, Climber Set w.Hole |



Tilt Connector Set

| Part Number | Descripción |
|-------------|------------------------------|
| 4000505 | CrossRail Tilt Connector Set |



L-Foot & T-Foot

| Part Number | Descripción |
|-------------|--------------------------|
| 4000630 | L-Foot Slotted Set, Mill |
| 4000080 | T-Foot X, Set, Mill |



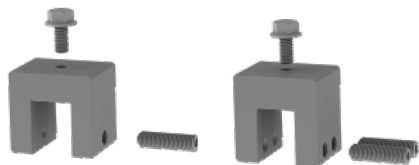
Everest Ground Lug

| Part Number | Descripción |
|-------------|----------------------------------|
| 4000006-H | Everest Ground Lug Set, 13mm Hex |



CR Microinverter & Opt Mounting Kit

| Part Number | Descripción |
|-------------|---|
| 4000629-H | CR Microinverter & Opt Mounting Kit, 13mm |



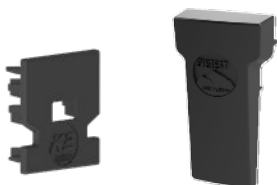
Standing Seam PowerClamps

| Part Number | Descripción |
|-------------|------------------------------------|
| 4000016 | Standing Seam PowerClamp, Mini |
| 4000017 | Standing Seam PowerClamp, Standard |



Gestión de cables

| Part Number | Descripción |
|-------------|---------------------------|
| 4000069 | TC Wire Management Clip |
| 4000382 | Sunrunner Cable Clip |
| 4005394 | Omega Wire Mangement Clip |



End Caps

| Part Number | Descripción |
|-------------|-----------------------------|
| 4000067 | CR 44-X End Cap |
| 4000431 | CR 48-X /48-XL Flat End Cap |
| 4001221 | CR 80 End Cap |