



Connecting Strength

Innovations 2023





K2 Buddy

With K2 Buddy, you can ensure the safety of your PV systems even in snowy regions and avoid unnecessary maintenance. The K2 Buddy is our first mechanical monitoring system that tracks snow loads on the modules 24 hours a day.

How it works

Installed quickly and conveniently, a weight tracker under a PV module connects to the end device of the system owner and installer and provides clear information about the current conditions.

In the event of high load values, **a push notification is transmitted.**

The user-friendly app shows at a glance whether there is a need for action and can thus prevent unnecessary roof inspections.

k2-systems.com/en/k2-buddy

More:





K2 Base

K2 Base enables fast, free, safe and accurate planning of PV projects. In just five steps, you can determine the optimal design for the K2 mounting system and the configuration of your PV project.

What's new

AI obstacle detection for faster planning: With the new intelligent obstacle detection function, elements such as chimneys, skylights or other obstacles, once drawn in, are recognised by the AI and added automatically.

New K2+ interface to PV*SOL Premium: The new interface to PV*SOL makes planning and processing even easier.

Full Touch Support: K2 Base is optimised for touch screens. This means that all steps can now be carried on tablets with the touch of your fingertip.

base.k2-systems.com 



Resource Center

Extensive and free E-learning opportunities: weekly live webinars, easy to follow tutorials and numerous trainings are available free of charge to knowledge-hungry PV enthusiasts in the new K2 Resource Centre.

PV projects are quick & easy - if you know how!

- Comprehensive support for newcomers and PV professionals
- Useful information for every stage, from optimal start to proper project completion
- Free webinars, trainings, certificates, tutorials and more!

k2-systems.com/en/resource-center 

More:





Connecting Strength

True to the motto Connecting Strength, we combine innovative mounting systems, digital technology and people with know-how and energy to drive sustainable solutions for solar installations. And this year is no exception. With the innovative K2 Buddy, PV modules can be protected from high snow loads. The K2 Base planning software makes planning even easier with many new features, including AI. There is a new digital training campus with round-the-clock support. And of course, there are many new K2 products that make installations even easier in new areas.

K2 is dynamic

At our heart lies the development of assembly-friendly mounting systems that are precisely tailored to the needs of our customers. Our soul is the common spirit of all employees. Together we define technical innovation and set new service standards, also digitally.

We invest in research and development in order to design sustainably economical mounting systems for the roofs of this world. All K2 systems are developed in Germany and are constantly tested according to strict criteria.

Our assembly systems are flanked by our digital tools to create holistic solutions for our customers that make work easier.

INTERNATIONAL

130 

K2 systems are installed
in over 130 countries
around the world

CAPACITY

27 GW 

Our installed systems
have a capacity of
27 gigawatts

EXPERIENCE

19 

We have 19 years of
experience in the field
of solar energy

More:



More product news can be found on our website:

k2-systems.com/en/company/news



New areas

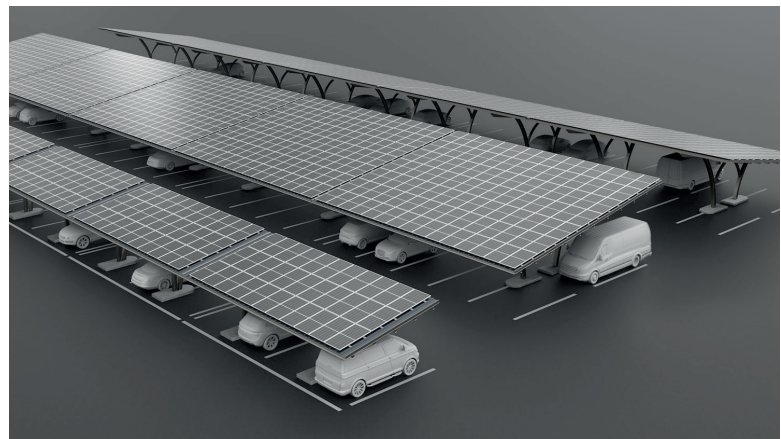
WallPV

Facade as a new application area on buildings: new standardised system for the facade, which makes it possible to find the right adaptation with K2 system solutions in cooperation with facade element manufacturers for sandwich, concrete or masonry and make facade a more important element for obtaining energy safely and sustainably.



Carport

- Opportunity to cover parking space with PV modules
- Standardised and at the same time flexible system for almost all parking lots



Ground solution

- Installation of medium-sized systems in which up to 3 modules can be placed on top of each other (in portrait orientation)
- For anchoring in ground or concrete
- Clever system enabling quick installation

