

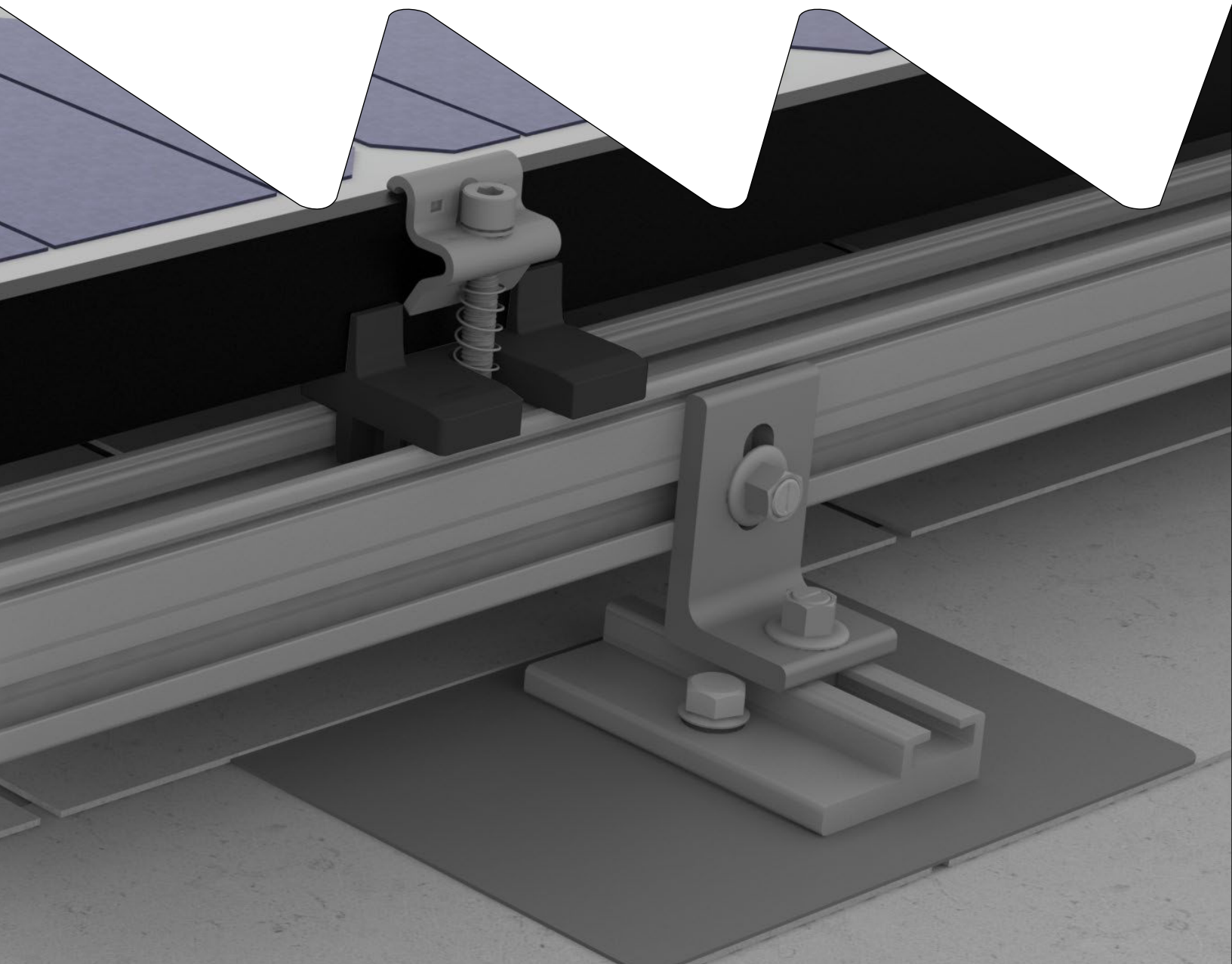


Connecting Strength

EverFlash eComp + SR Slide Kit



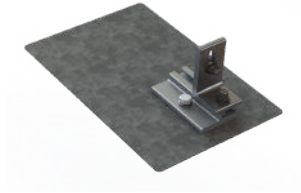
QUICK GUIDE



Components

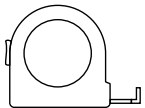


1 4000015 / 4000027 / 4000029



EverFlash eComp + SR Slide Kit

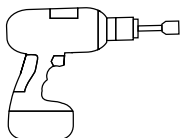
Tools Overview



≥ 10 ft



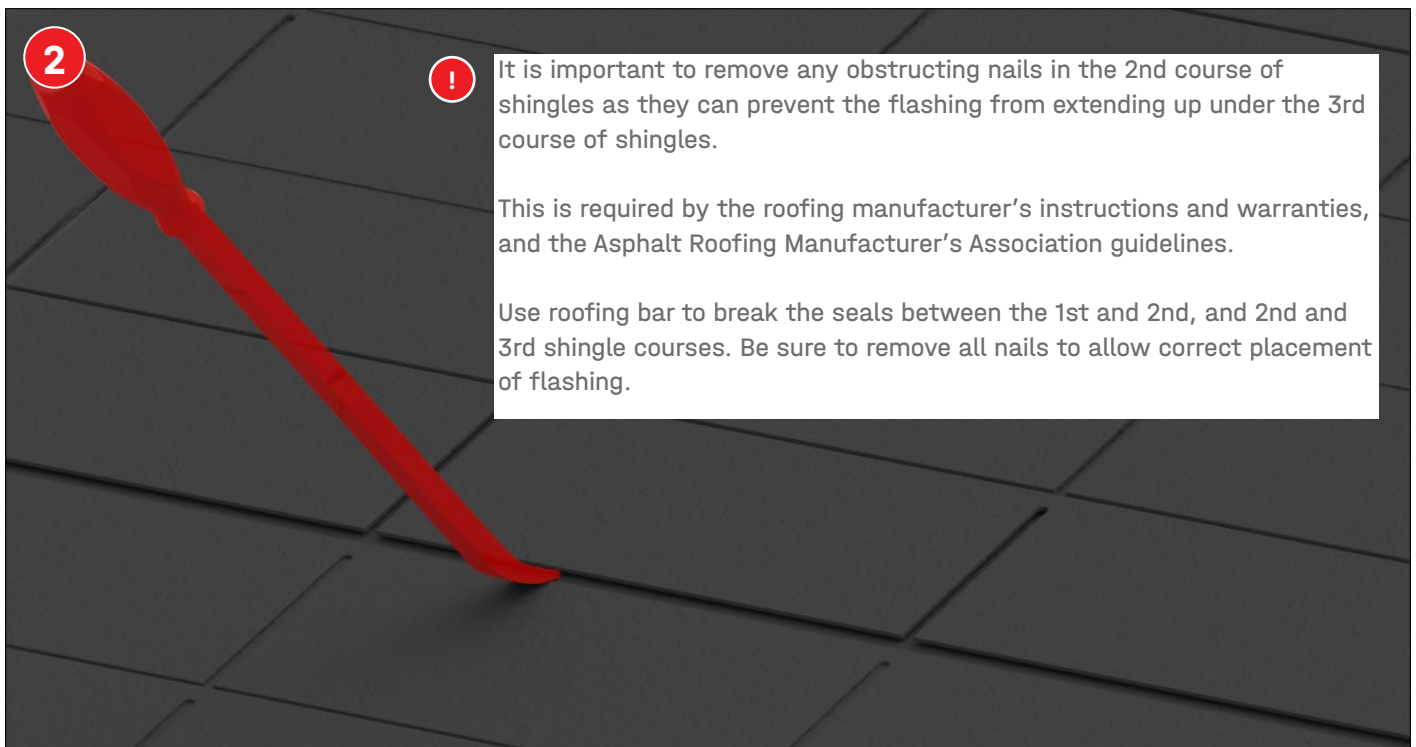
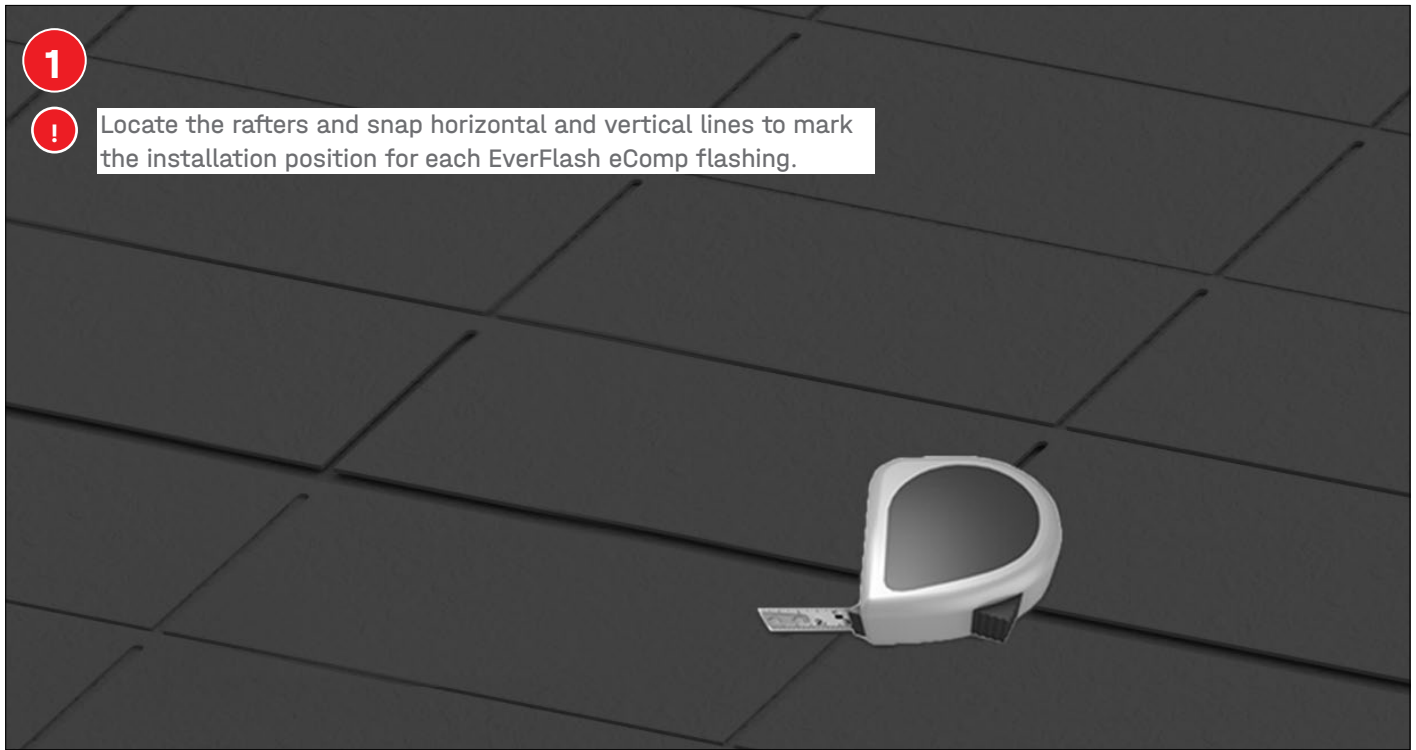
≥ 6,0 m



13 mm deep socket
/ Torque 10 ft-lbs



Assembly



3



Drill a 3" deep pilot hole by drilling square to the rafter using a 7/32" aircraft extension bit. If the pilot is severely out of square, the roof sealing washer may not compress consistently and the seal may be compromised.

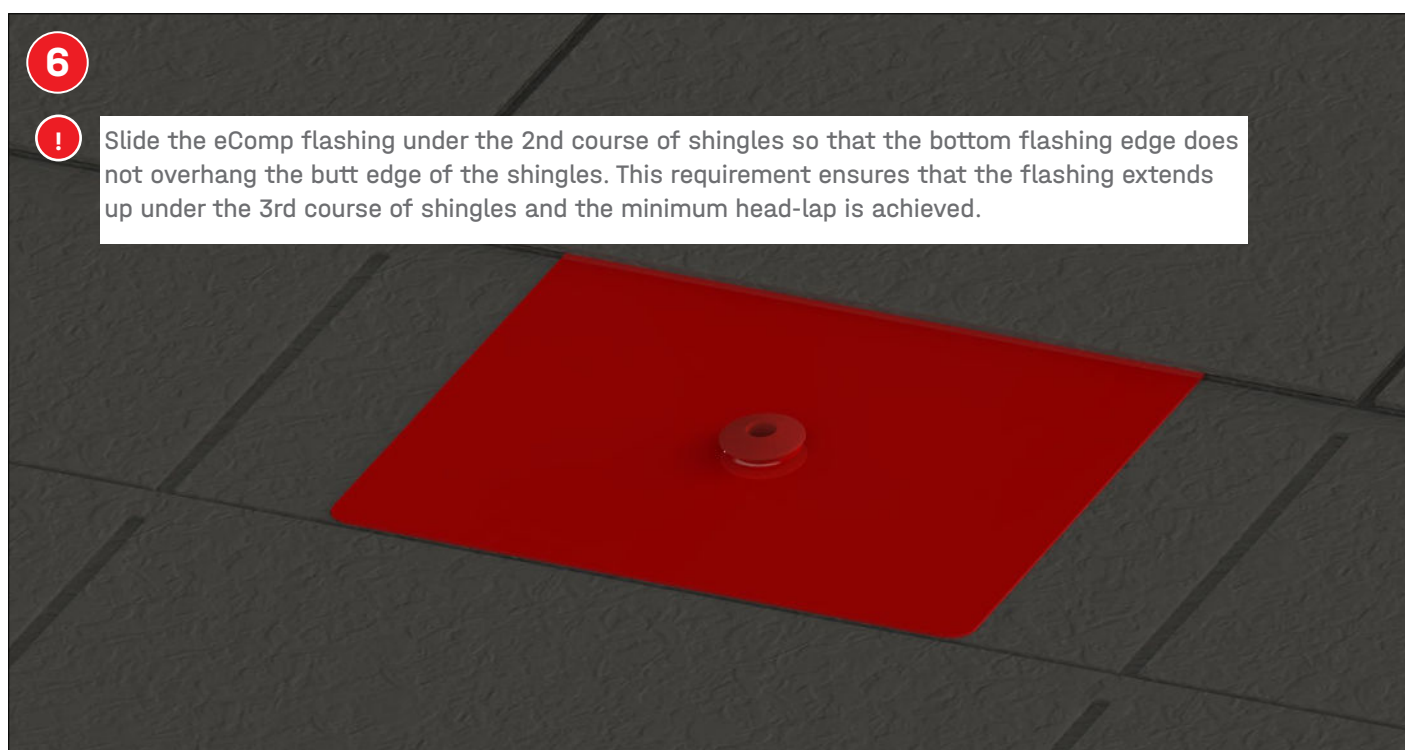
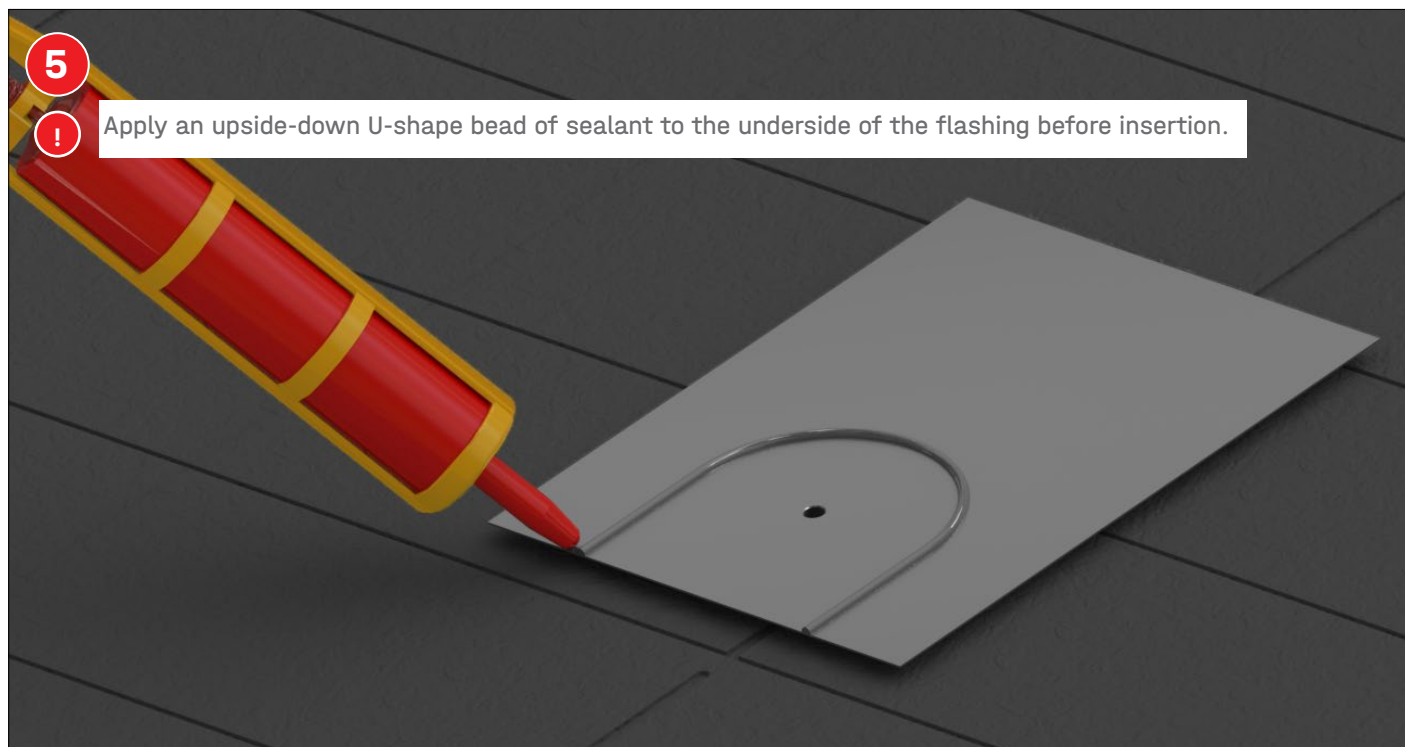


4



Filling the pilot hole with sealant is a secondary waterproofing step, which is required by the roofing manufacturers.



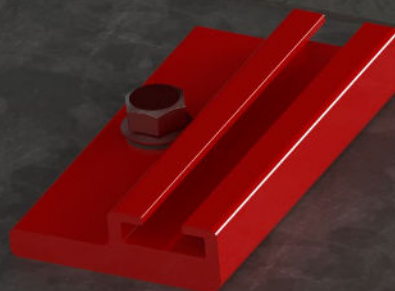


7



Swivel the Slide Kit to gauge proper torque when driving the lag screw. Tighten until the Slide Kit stops swiveling easily.

The torque range is between 8.3-11.6 ft-lb depending on the type of wood and time of year. If using an impact wrench to install the fasteners, be careful not to over-torque the fastener. You may need to stop and use a ratchet to finish the install.



8

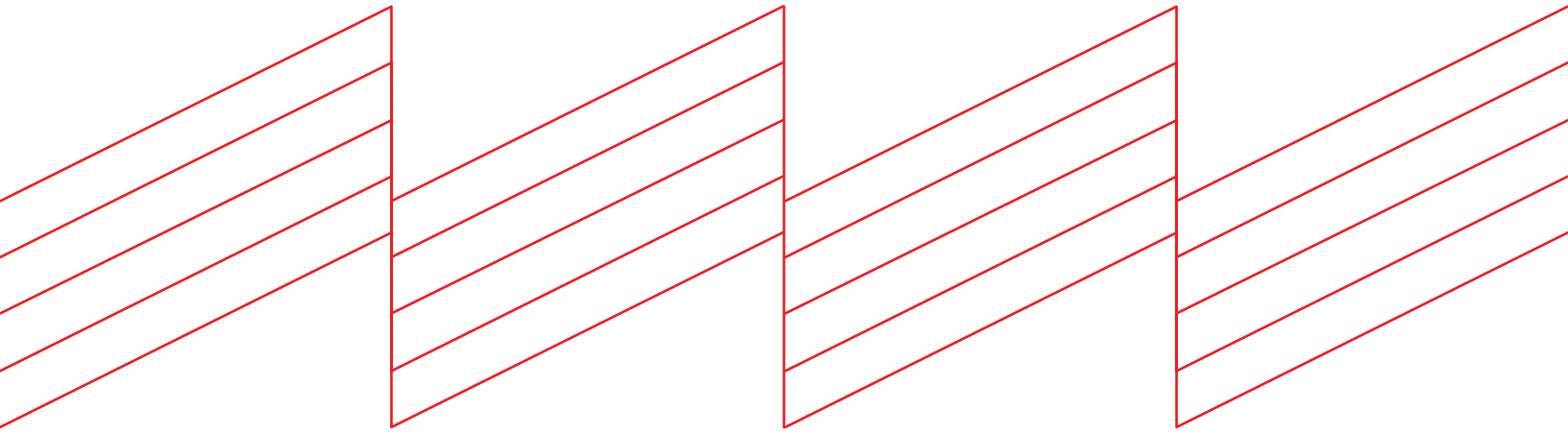


Insert T-Bolt through bottom L-Foot slot and into the Slide Bracket. Adjust the L-Foot to your desired position. Turn the T-Bolt clockwise ensuring that the mark at the end of the shaft is vertical, indicating proper alignment. Tighten to 25.8 ft-lbs (35 Nm). To attach the CrossRail, repeat the T-Bolt install process by inserting the T-Bolt through the top L-Foot slot and into the side channel of CrossRail.





Connecting Strength



K2 Systems, LLC

4665 North Ave. Suite I • Oceanside, CA 92056 •
USA +1.760.301.5300 • infous@k2-systems.com
www.k2-systems.com

EverFlash eComp + SR Slide Kit Quick Guide V2 | 1123 • Subject to change
Product illustrations are exemplary and may differ from the original.