



**Connecting Strength**

**20** years **Driving  
renewable  
energy**

We celebrate...

**our highlights 2024**





# We celebrate connecting application areas with innovative products

Secure connections to roofs, facades, ground mounts and carports

## K2 Dome 6 - the flat roof all-rounder

### K2 D-Dome 6.15 Xpress

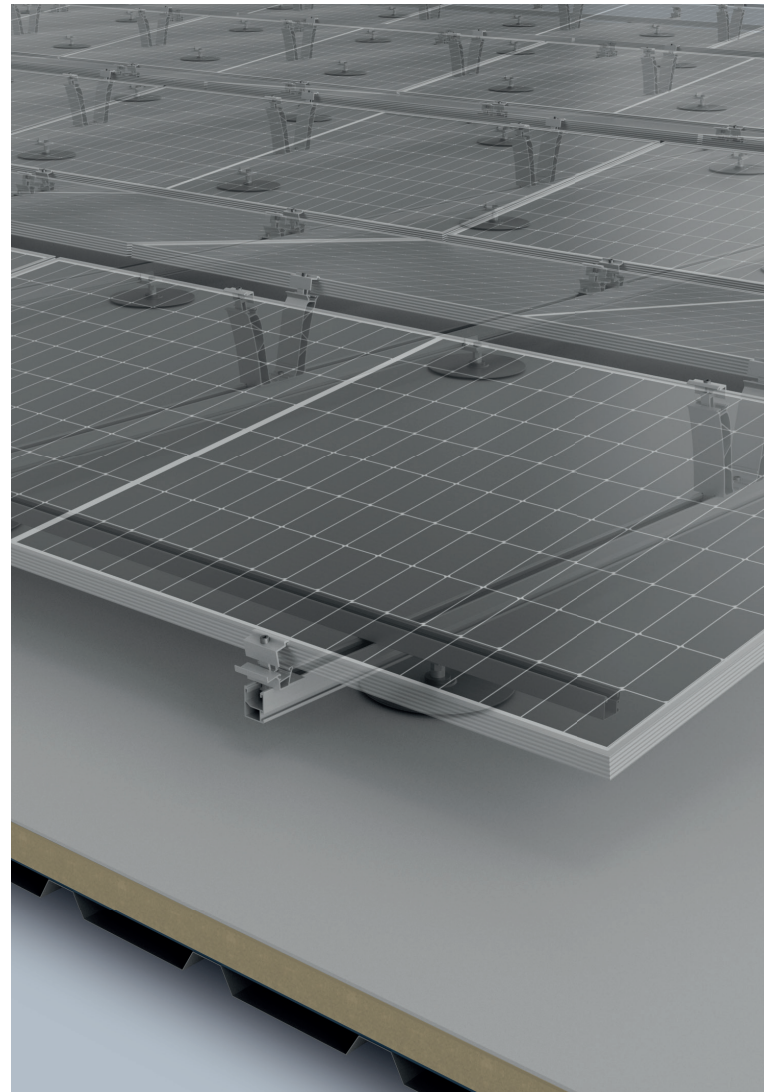
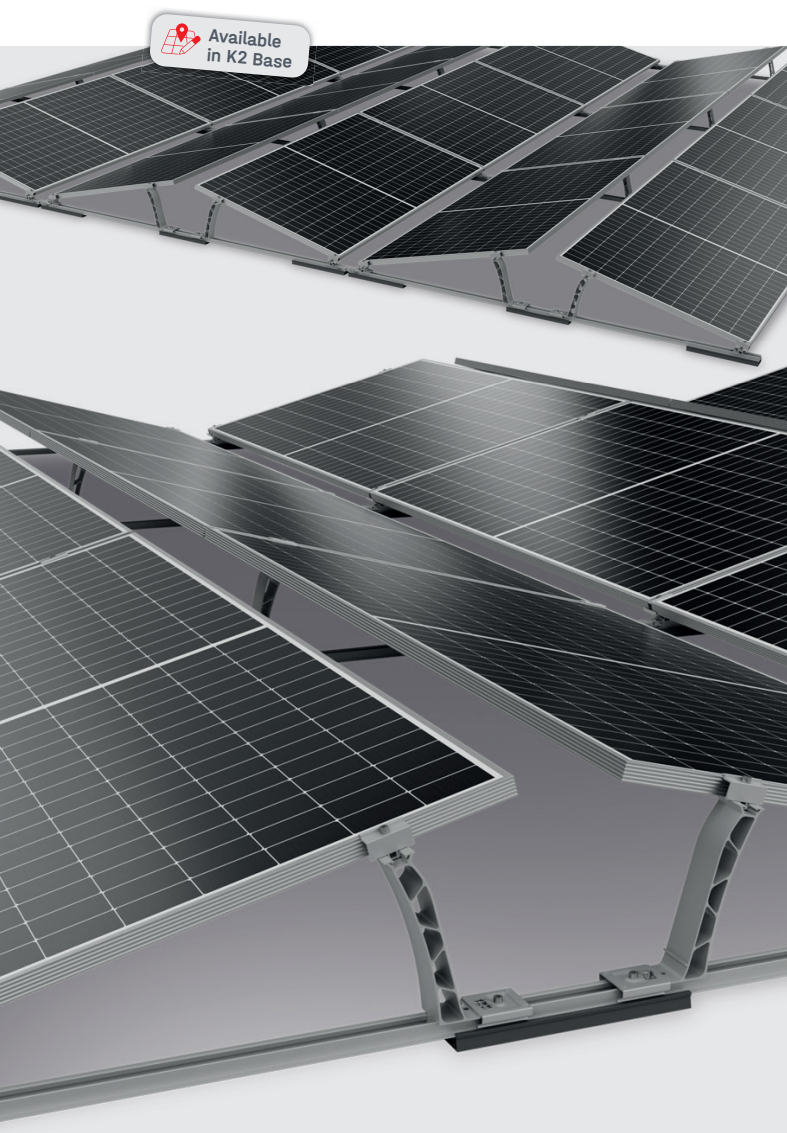
#### D-Dome 6 Xpress also now in 15°

- K2 modular concept: Dome 6 Xpress components now also with a 15° inclination
- Well-known advantages of double-sided inclination: optimum utilisation of roof surfaces and low ballasting due to aerodynamic shape

### K2 D-Dome 6.10 Lifted LS

#### In Cooperation with Sika

- Coordinated solution between the roof membrane and the mounting system thanks a close partnership and cooperation with Sika
- Installation on Sika PVC foil roofs (for example)
- Dome 6.10 LS system is fastened with roof anchors and lifted off the roof membrane
- K2 modular concept: utilizes existing components from the K2 SingleRail family





## K2 D-Dome 6.10 with Basic-Rail on Trapezoidal Sheet

- With familiar K2 D-Dome 6.10 components for additional inclination with the K2 BasicRail
- The variants of the K2 Dome 6 system on trapezoidal sheet metal can be planned as usual with the K2 team of experts

## K2 Buddy

### **Mechanical monitoring system for snow loads on modules**

- Continuous innovative monitoring system helps protect the PV modules in case of high snow loads
- Live data via the K2 Buddy app for installers and homeowners
- Early warning function for impending module overloads
- Warranty extension from 12 to 20 years for the mounting system
- Module frame height: 30 - 35 mm
- Now even easier to install



## K2 GreenRoof Vento

### The clever solution for green roofs

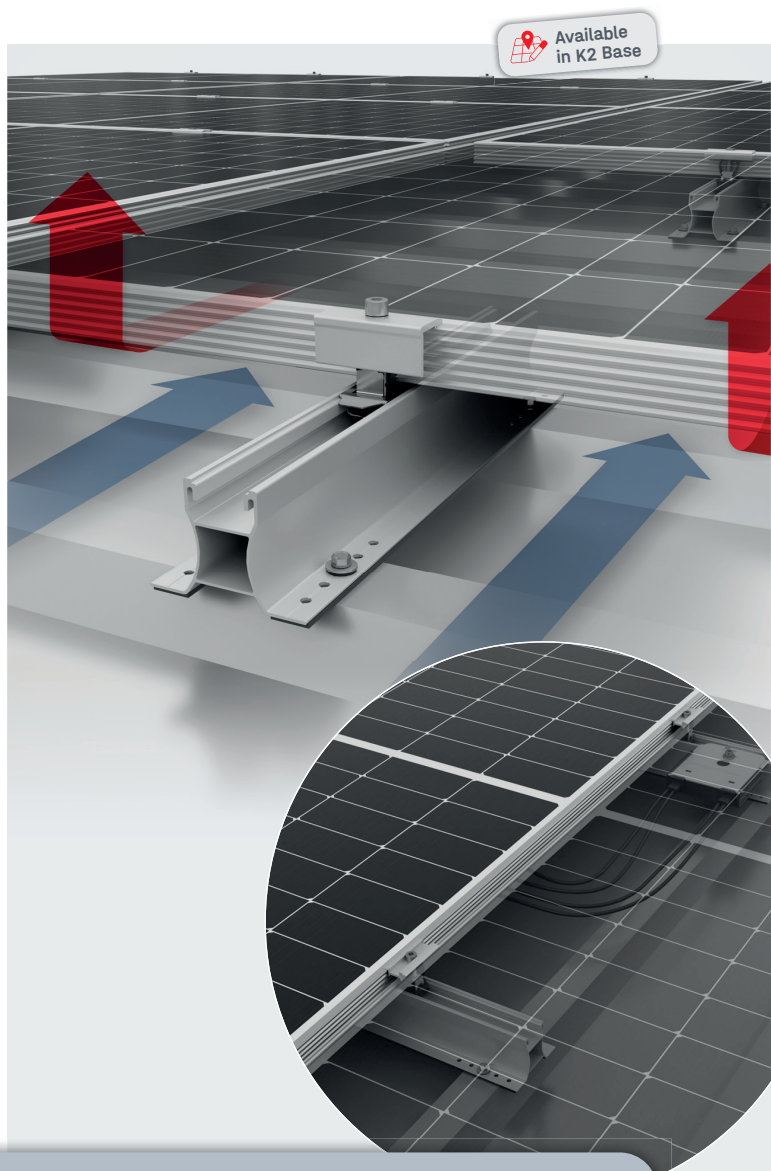
- K2 modular concept using existing components of the K2 TiltUp Vento system
- Portrait and landscape inclinations at 10° and 15°
- Good integration into green roofs



## K2 MiniRail 60

### Proven K2 MiniRail system now even higher

- Allows for installation of optimizers and micro-inverters
- Improved rear ventilation for the modules



Visit our website for further details about our new products:

[k2-systems.com/en/news](https://k2-systems.com/en/news)



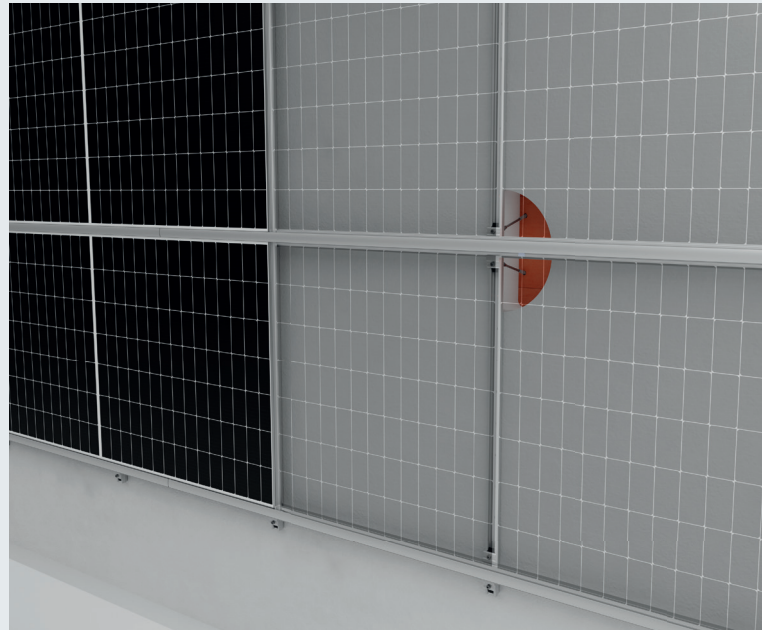
# We celebrate the full potential of the sun

We ensure that the modules are securely fastened, everywhere!

## K2 WallPV MultiRail

**Facade solution for external thermal insulation composite system (ETICS) facades**

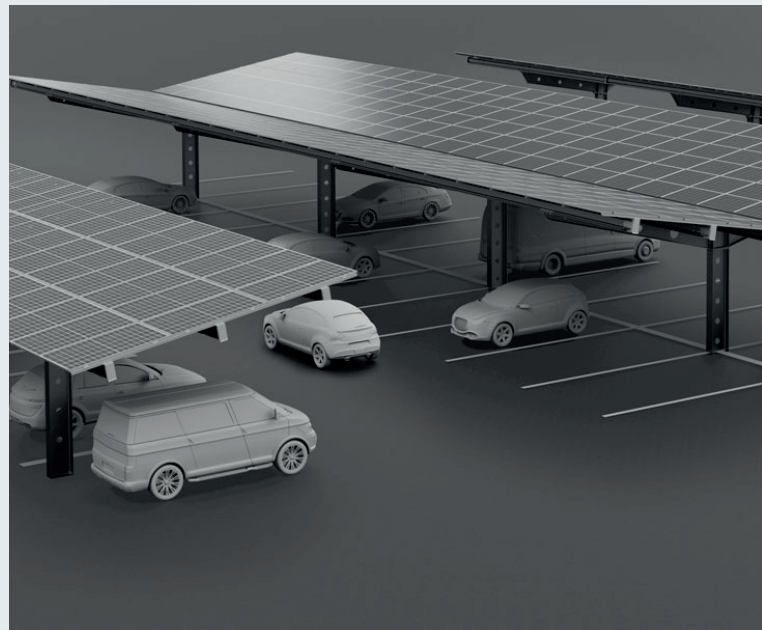
- Fast, simple and cost-effective installation
- Close partnership and cooperation with Reisser Schraubentechnik GmbH
- Can be fastened through the insulation with the Reisser RDS-CA spacer screw from Reisser or comparable screw solutions
- Does not require removing the insulation
- K2 modular concept: with the K2 MultiRail and the K2 InsertionRail



## K2 Carport

**Great flexibility meets minimal effort**

- Single-post system ensures a comfortable parking experience
- Installations with or without trapezoidal sheet metal roofing
- Modular layout: in double rows or in single rows with 3x portrait
- Can be colour customized



## K2 N-Rack

**Simple, modular ground-mounted systems**

- For pile-driven foundations: possible layout 3x Portrait 15° and 2x Portrait 20°
- For concrete foundations: possible layout 2x Portrait 20°
- Ergonomic handling thanks to lightweight material
- For mounting in concrete or directly in the ground
- Combines the advantages of steel driven foundations with the functionality of aluminium components







## K2 Unlimited Project Sharing

Connecting people and companies

- Share projects in K2 Base with people within and now also outside of your organisation



## K2 Image Upload

For simple, individualised planning

- Draw roof surfaces intuitively with just a few clicks, even without satellite images
- Image upload for common formats and types such as drone images, technical drawings, etc.



## Otto Lehmann Tile Replacement

- Planning with a tile replacement is now possible in K2 Base
- Coordinated solution as a result of close cooperation with Otto Lehmann
- Structural analysis available with planning in K2 Base
- Compatible with K2 SingleRail and K2 SolidRail





# We celebrate 20 years of Connecting Strength

## We celebrate...

### ... you!

Each and every individual in the solar industry, because only by joining forces can we drive forward the energy transition. Together we have experienced the many ups and downs of the "Solarcoaster". And yet there is one constant: you! We look forward to the next 20 years with you!

### ... strong partnerships!

With you as partners, customers, suppliers, service providers and K2nians. We have achieved a lot together and are still excited to continue to do even more!

### ... 20 years of expertise!

We let our expert knowledge grow in numerous places and share it with you in our Resource Center with training sessions, webinars, videos and with hands-on product training sessions.

### ... Sustainability!

Continues to be important for us: with approximately 110 GWh of green electricity generated daily by PV systems that are equipped with K2 mounting systems, a low CO<sub>2</sub> footprint, 75% recycled material in our aluminium products and 85% production in the EU.

#### POWER

**> 32 GW** ⚡

Total output of installed K2 systems

#### LOCATIONS

**12** 📍

Locations on 5 continents

#### REGIONAL VALUE CREATION

**85%** 🌍

of K2 products are produced in the EU

#### SUSTAINABLE PRODUCTION

**75%** ♻️

of K2 products are made from recycled aluminium

#### CO<sub>2</sub> FOOTPRINT

**4.9 t** 🦶

for the aluminium used in our products, lower than global and European averages



Visit our website for further details about our new products:

[k2-systems.com/en/news](https://k2-systems.com/en/news) 🔗