



Press release

27 January 2025 | Renningen-Malmsheim

### More security thanks to monitoring and early warning functions: K2 Buddy - now also for tiled roofs

The K2 Buddy can now also be used for tiled roofs. The monitoring system helps protect photovoltaic modules from damage caused by excessive snow loads. Previously, the early warning system provided more security on flat roofs, and now it is also available to planners and installers for pitched roofs with tile coverings.

Photovoltaic modules can be effectively protected from high snow loads thanks to precise tracking. K2 Buddy contains sensors that are attached under one of the modules to continuously measure the weight of snow on the modules. The data can be viewed digitally and in real-time on the K2 Buddy app. With its intuitive user interface, it provides both the installer and the system owner with clear information about the current situation on the modules and sends a push notification when the load values are too high and action is required. This avoids unnecessary roof inspections and helps reduce snow removal work.

With a few additional components, the K2 Buddy can now also be installed on roof pitches of 15° to 45° and a rafter spacing of 0.55 to 1.2 meters in combination with the K2 SingleHook 3S roof hook and the K2 SingleRail 36 in a single layer. A three-minute YouTube video shows how easy it is to install the K2 Buddy on tiled roofs: [https://youtu.be/pw8u\\_mRkqZc](https://youtu.be/pw8u_mRkqZc)

"With the expansion of K2 Buddy to tiled roofs, we offer customers more flexibility and security when installing PV systems. Our goal is to maximize the longevity and efficiency of the systems while minimizing maintenance costs," explains Katharina David, Co-CEO of K2 Systems.

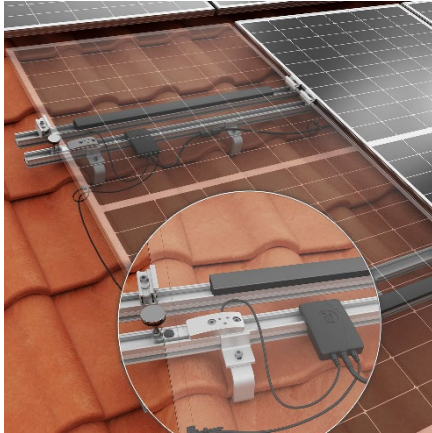
#### Highlights: Seamless data exchange with K2 Base and extended warranty

A plus for planners and installers is the ability to plan Buddy in K2 Base. The data can also be automatically exchanged between the planning tool and the app, making manual transfers unnecessary. The system owner also has an additional reason to be happy: The warranty period for the K2 mounting system is extended to 20 years when K2 Buddy is properly installed.

Read more: <https://k2-systems.com/en/digital-services/k2-buddy/>



## Connecting Strength



*With a few additional components, the K2 Buddy can be installed on roof pitches of 15° to 45° in combination with the K2 SingleHook 3S roof hook and the K2 SingleRail 36 in a single layer.*



*With its intuitive user interface, the K2 Buddy App provides both the installer and the system owner with clear information about the current situation on the modules and sends a push notification when the load values are too high.*

K2 Systems GmbH is one of the world's leading manufacturers of photovoltaic mounting systems with twenty years of experience. Founded in 2004 and headquartered in Renningen near Stuttgart, the company offers universal components for flat and pitched roofs that are easy to install, durable and safe. The company's portfolio also includes mounting systems for façades, ground mounts and carports. Digital services, such as the K2 Base planning software, support the process, making PV projects quicker and easier.

K2 Systems develops in Germany, manufactures predominantly in Europe, and focuses on a sustainable sourcing strategy. PV systems with K2 substructures are in use in over 130 countries and generate approximately 110 GWh per day. The heart of its strategy is the development of easy-to-install mounting systems that are precisely tailored to the needs of customers. With around 420 employees at twelve global locations and in close cooperation with international partners, the company is working towards the vision of global electricity generation from solar energy. This is how K2 Systems is driving the energy transition.

Media contact: Nina Oral | +49 (0)7159 42059-490 | [n.oral@k2-systems.com](mailto:n.oral@k2-systems.com)

Photos and graphics for download can be found at <https://k2-systems.com/en/company/press-media/>