



HIGHLIGHTS 2025

Connecting Strength

*From **BASE** to **PEAK** - Easy! Let's Speak!*



Connecting Strength

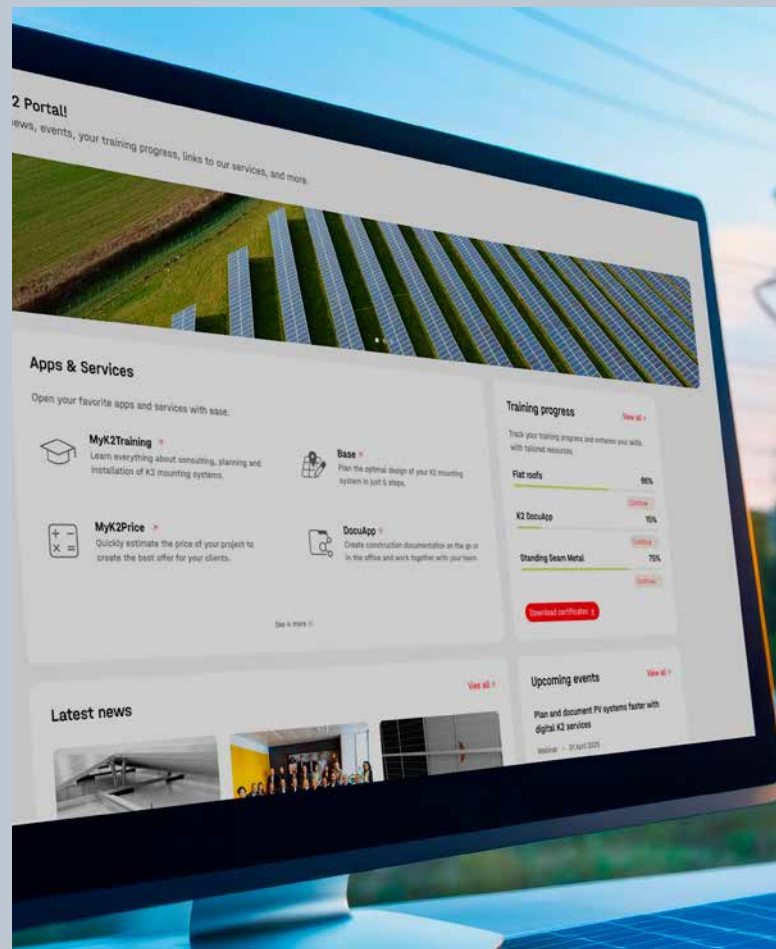


From BASE...

MyK2 Dashboard

The central cockpit for the entire project cycle

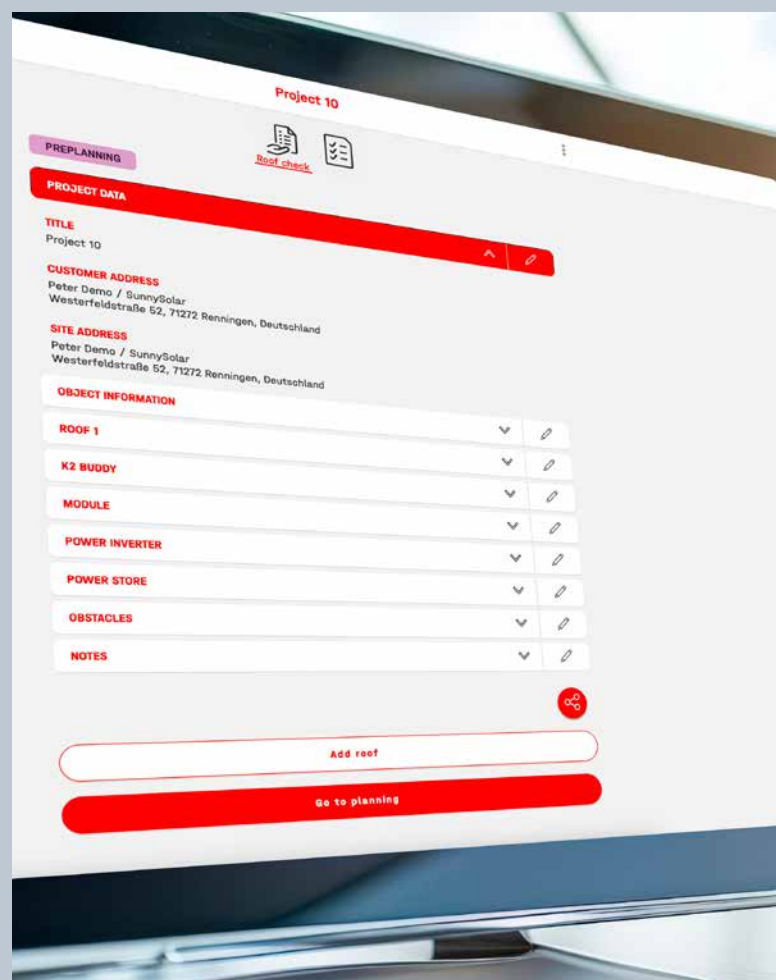
- Everything at a glance: Data collection in the K2 DocuApp, project planning in K2 Base and helpful functions such as MyK2Price and MyK2RoofHook readily available
- Extended access to the product catalogue with prices and technical drawings
- Comprehensive overview: Upcoming K2 trade shows, K2 news, K2 webinars and individual progress with K2 Training



K2 DocuApp

Pre-planning, paperless documentation and warranty extension

- On-site project data collection and quick transmission to K2 Base
- Automatic and completely paperless creation of project documentation
- Warranty extension on the mounting system from 12 to 20 years for projects planned and verified in K2 Base, and recorded in the K2 DocuApp
- Integration of the web app in the MyK2 dashboard

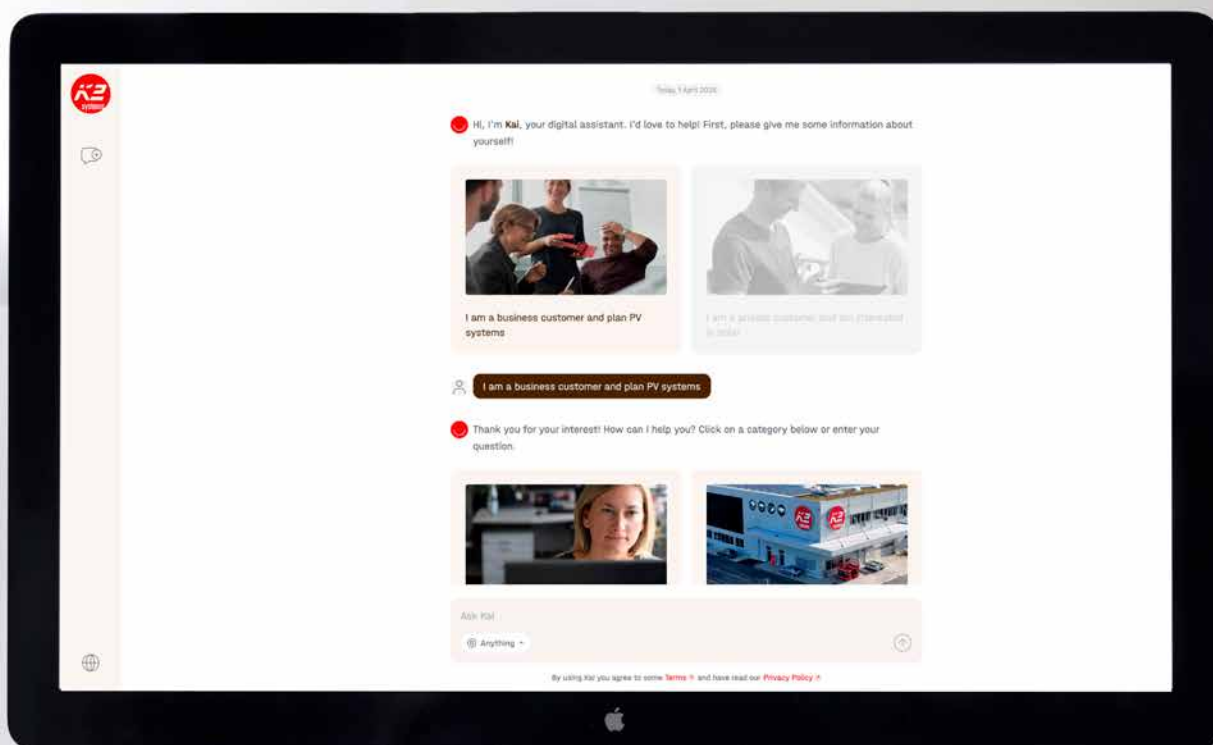


K2 KAI

The digital assistant with AI power

- Helpful support for the planning and installation of K2 mounting systems - available around the clock
- Explore structured topics, gain better insights into the K2 world, and benefit from well-founded tips
- Ask questions and get immediate answers

Smart. Fast. Always available!



ALWAYS UP TO DATE



All new products at
a glance



Connecting Strength

ALWAYS UP TO DATE



All new products at
a glance

NEW in K2 Base

Connecting Strength now also with Huawei, Kostal and PVcase

Connection to the planning tools of:

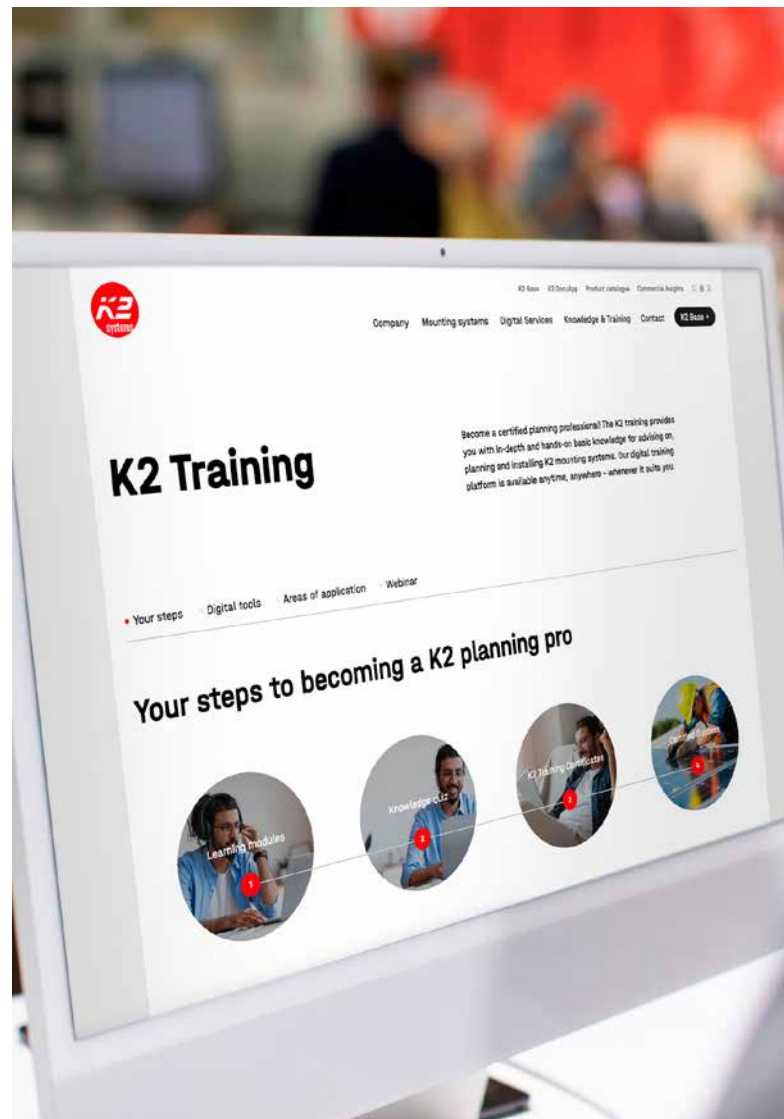
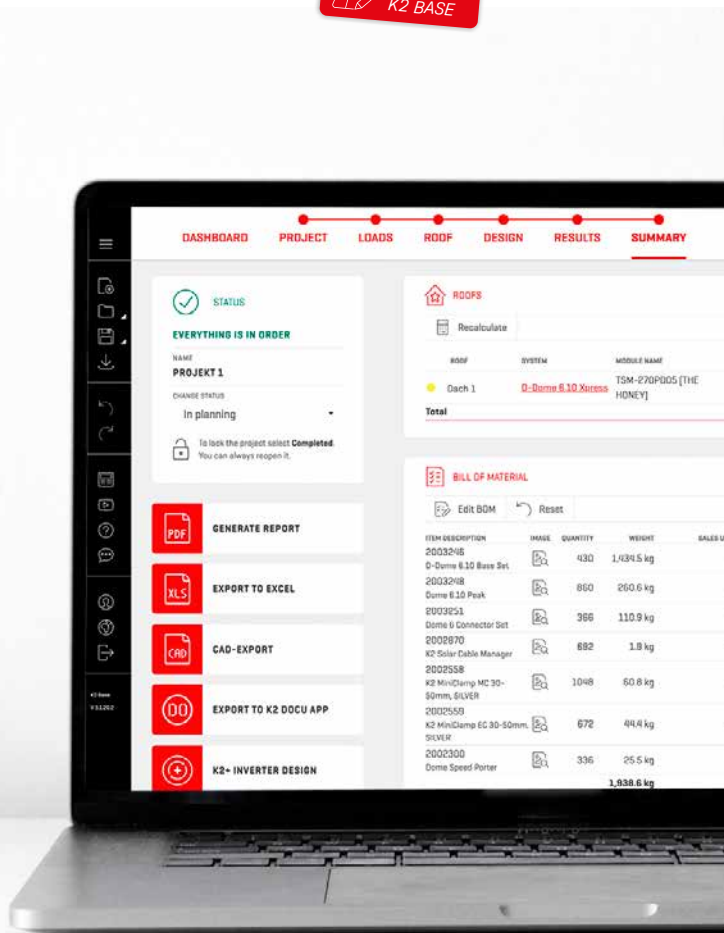
- Huawei – FusionSolar SmartDesign
- Kostal – Solar Plan
- PVcase – RoofMount

K2 Training

‘Knowledge & Training’ on the K2 website:

New content and bundled know-how for PV professionals and beginners

- Modular e-learning in bronze, silver and gold: Basic knowledge of planning, advice and installation – practical, interactive and available anytime
- Updated content and new topics such as K2 WallPV, K2 Buddy and K2 DocuApp: Trainings always up-to-date – ideal for individual learning paths
- Proven learning modules for flat roofs, tiled roofs, trapezoidal sheet metal roofs, etc. remain available and provide a solid foundation





...to **PEAK**

K2 Dome 6

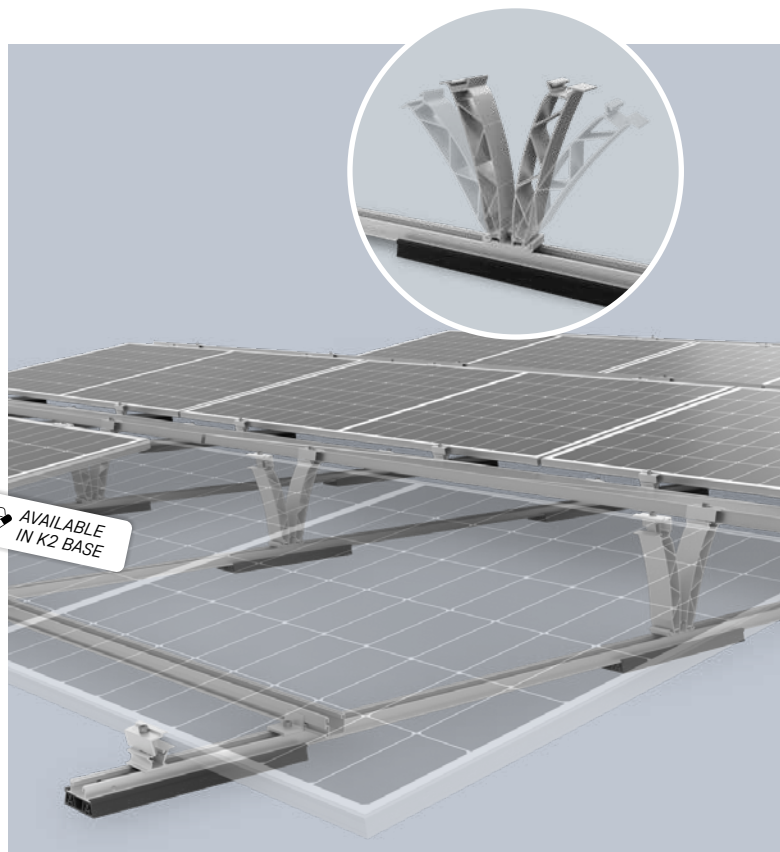
The flat roof all-rounder in the C&I sector

K2 D-Dome 6.10 Xpress LS

Xpress meets LS: pre-assembled system for higher load cases

- Combination of the advantages of the pre-assembled Xpress system with those of the LS system
- Time-saving installation: pre-assembled components and partially tool-free click mechanism
- Clamping on the long module side for higher load cases and the current module generation
- Intuitive application through familiar Dome 6 components

AVAILABLE
IN K2 BASE



K2 Dome 6 Xpress Connector

The Xpress rail connector

- Tool-free connection of the K2 BasicRails
- Integrated equipotential bonding
- Pre-assembled for quick installations



ALWAYS UP TO DATE

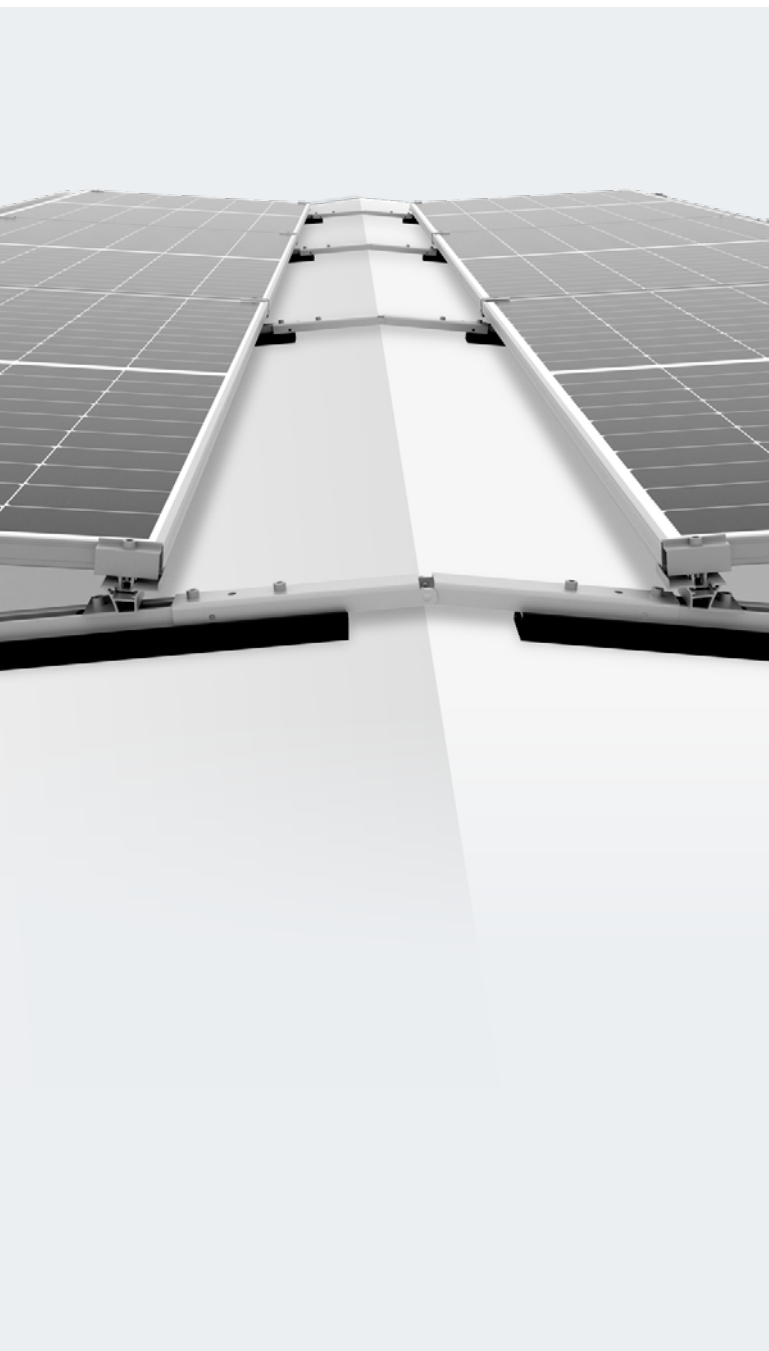


All new products at
a glance

K2 Dome 6 RidgeConnector

Module block connection for reduction of ballast and roof anchors

- Module block connection over roof ridges
- Easy link to K2 BasicRails
- Increase of composite and system area
- Potential reduction of ballast and roof anchors
- Technical support in planning from the K2 Technical Sales Team



K2 Dome 6 LoadSolver

Increase of the load-distributing area under the PV system

- Better distribution of pressure loads on the roof insulation
- Advantages of the well-known Mat S: shear-soft function, high friction coefficient
- Variable, project-specific use
- Simple and quick installation: Twist & Lock

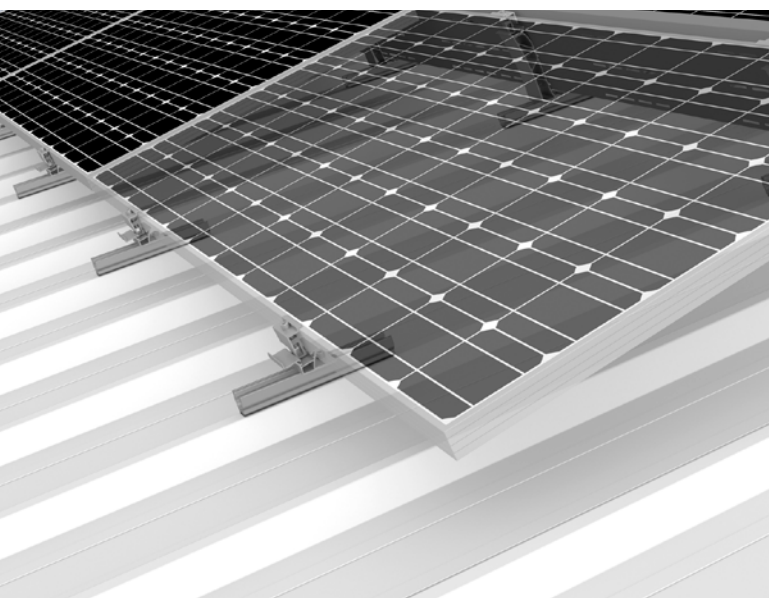
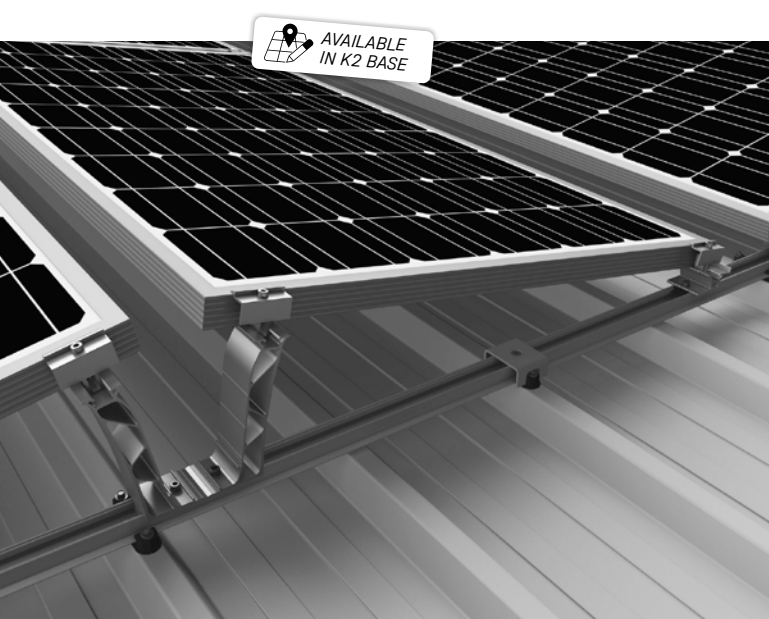




K2 Dome 6 on trapezoidal sheet metal

Additional elevation on trapezoidal sheet metal

- Familiar Dome 6 components for elevation on trapezoidal sheet metal
- S-Dome and D-Dome on BasicRail
- S-Dome 6.10 Classic LS on MultiRail
- All variants plannable in K2 Base



Connecting Strength with Sika

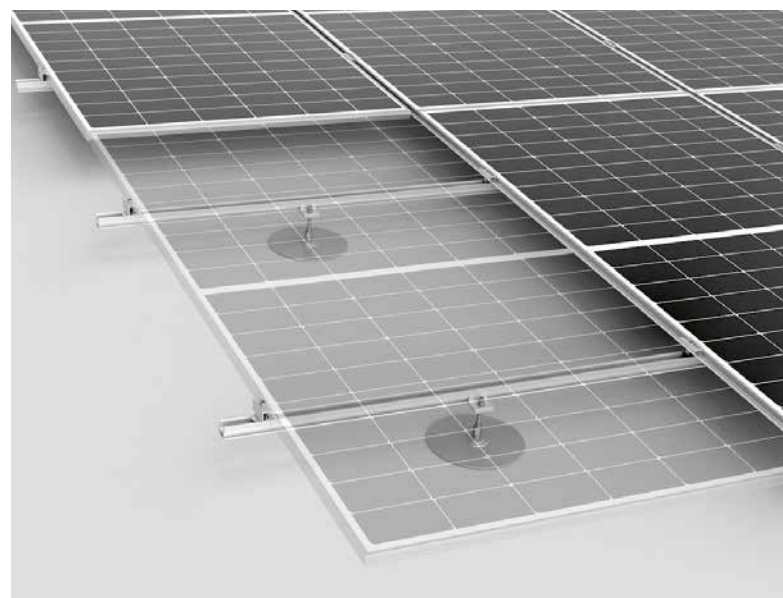
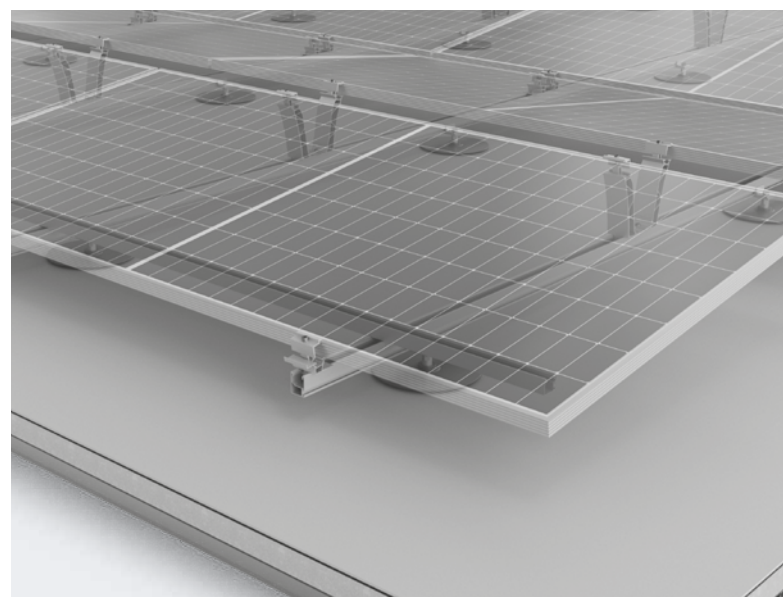
Coordinated solutions between roof and mounting system

Flat roof:

- SikaRoof® Anchor for Dome 6, plannable in K2 Base
- K2 Dome 6 Lifted LS System for additional clearance from the roof surface

Pitched roof:

- K2 SingleRail IFP: secure attachment on membrane pitched roofs with familiar components



K2 GreenRoof Vento Kits

The green roof system now also available as a kit solution

- Pre-assembled beam kits for faster installation
- Beam kits in two lengths with a 10° elevation



K2 FlexAdapter

For tile imitation sheets

- Easy installation on curved roof tile sheets
- Adapter with height and tilt adjustment
- K2 BasicClip with sealing sleeve for additional security
- Modular: compatible with K2 BasicRail and K2 MultiRail
- Also suitable for barrel roofs



ALWAYS UP TO DATE



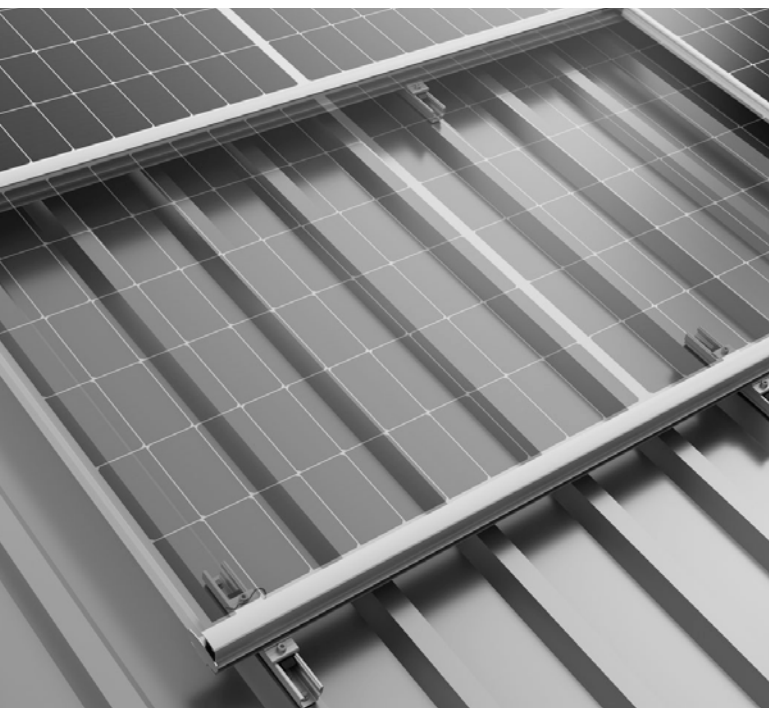
All new products at
a glance



K2 InsertionRail 2.0

The new InsertionRail System now also for pitched roofs

- Modular: one InsertionRail for pitched roofs and facades
- For K2 MultiRail, K2 BasicClip and K2 SolidRail
- Faster installation



K2 SingleHook 3S Light

The aluminium roof hook for flat tiles

- Easy installation for flat tiles due to reduced material thickness of the bracket (6 mm)
- Wider application range of K2 SingleRail System: advantage in inventory management



ALWAYS UP TO DATE



All new products at a glance

K2 WallPV



AVAILABLE SOON
IN K2 BASE

Modular facade solutions

- K2 WallPV PerfoRail, K2 WallPV MultiRail and K2 WallPV FacadeRail now plannable in K2 Base

New CrossConnector T component for K2 InsertionRail

- Fewer components
- Faster installation
- Improved aesthetics (no visible rail end)
- Extended utilisation of the facade area



K2 Carport

Simple, flexible, aesthetic

- Convenient parking experience thanks to one-post system: no obstacles in the vehicle area
- Single or double carports
- Modular layout: 3 x portrait
- Customizable in color
- Optional: trapezoidal sheet metal roofing and rainwater drainage



K2 N-Rack

Ground-mount made easy

- Advantages of steel pile-driven foundations meet the functionality of aluminium components
- One system, three foundations
- Pile-driven foundations: Module layout 3 x portrait 15° and 2 x portrait 20°
- Concrete foundations: Module layout 2 x portrait 20°
- Screw foundations: Module layout 3 x portrait 15° and 2 x portrait 20°
- Calculation-free kits for smaller systems





We are the **SUSTAINABLE CONNECTION**

Sustainability has always been part of K2's DNA.

This means: around 124 GWh of green electricity generated daily by PV systems equipped with a K2 mounting system. A low CO2 footprint and 85% local production in the EU.

OUR FACTS

PERFORMANCE

> 34 GW ⚡

total output of installed
K2 systems

CLEAN ENERGY

124 GWh ☀️

per day are generated using K2 Systems
- the equivalent of 12 coal-fired power plants

REGIONAL VALUE CREATION

85 % 🌐

of K2 products are
produced in the EU

CO2 FOOTPRINT

4.8 t 🌱

for the aluminium used in K2 products
- lower than the global and European
average

