




Successfully Realising the Energy Transition

At K2 Systems, we are driving global power generation through solar energy. Our focus is on the development of easy-to-install mounting systems, perfectly tailored to meet the needs of our customers. Our soul is the common spirit of our employees. Together, we define new technical innovation and set new service standards, also digitally.


K2 at a Glance

10 
Locations


360 
Employees

3 
Continents

120 
Worldwide
Distributors

>130 
Countries with
K2 Systems

>36 GW 
Total onstalled
capacity of K2

>150 MW 
weekly
Shipments

3 Million 
Projects worldwide
(in the last 5 years)

It Only Works Together

Our mission is clear: to safeguard the Earth for future generations.

Sustainability is the foundation of our business strategy – from sourcing to regional manufacturing, we continuously work to minimize our CO₂ footprint.

Green Power

124 GWh – of solar energy are generated daily by K2 Systems – equal to 12 coal-fired power plants

Regional Value Creation

85% of K2 products are produced in the EU

CO₂ footprint of 4,8t for the aluminum used in our products – lower than global and European average



We connect strengths

At K2 Systems, we offer innovative mounting solutions combined with unparalleled customer service – both digitally and live. Our systems are intuitive and modularly designed using universal components to allow for quick installations and come with a 12-year warranty.

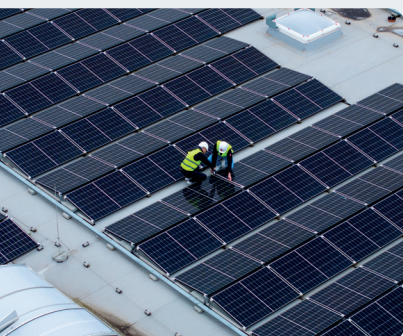
Commercial and Industrial Applications



Pitched roofs

Trapezoidal Sheet, Corrugated Sheet, and Sandwich Panels

- BasicRail: Easy to install floating mounting system with certification and technical approvals (abZ)
- Various cost-optimized and short rail systems



Flat roof

Concrete, Membrane, Bitumen, Green, and Gravel Roofs

- K2 Dome 6: ballast-optimized all-rounder with certifications and abZ
- GreenRoof Vento: flexible solution for green and gravel roofs



Facades

- K2 WallPV (CarrierRail, FacadeRail, Multi-Rail): suitable for large PV installations on industrial or commercial buildings with facades made of concrete, sandwich elements, corrugated sheet, and trapezoidal sheet
- Scalable, modular components for new and existing buildings

Top Customer Service

Our technical experts are personally available to assist you.

Additionally, our Knowledge & Training Center offers free webinars, training sessions, tutorials, and a wealth of expertise 24/7. Our K2 Community is also here to help, providing valuable tips and ideas.



Extensive Digital Services

K2 Base

Online planning software to easily plan the structural design of the mounting system and directly send project data to other tools, as well as wholesaler webshops.

K2 Buddy with K2 Buddy App

Mechanical and digital monitoring with an integrated early warning function for module overloads

K2 DocuApp

Your digital assistant, from capturing project data to complete project documentation

K2 Kai

The AI assistant for K2 – 24/7 help, clear answers and smart tips for planning & installation