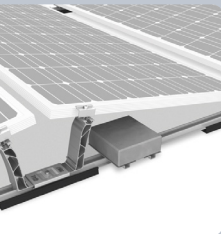


K2 QUICK GUIDE

# PV on membrane roofs



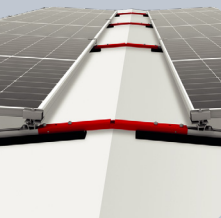
## Ballast

- Ballast-optimized K2 Dome Systems
- Further ballast reduction possible
- Optimized pressure distribution on thermal insulation using additional Mat S or K2 LoadSolver



## Roof anchors

- Structural verification of various roof anchors in K2 Base
- Collaboration with Sika: Coordinated system solutions



## K2 Dome 6 RidgeConnector

Ridge connection as an alternative for roof anchors

Learn more



# Here's what's behind it



## An entire supply chain built on sustainability

- Certified European aluminium suppliers committed to renewable energy, recycling, and transparent CO<sub>2</sub> reporting
- Resource-efficient and responsible production starting from the very first step of the value chain



Learn more



K2 Systems GmbH · Haldenstraße 1 · 71272 Renningen · Germany

www.koegel.com