



Trade fair innovations at Intersolar 2025:

"From Base to Peak" - K2 Systems takes photovoltaic installations to the next level

From May 7 to 9, 2025, Munich will become the hotspot of the solar industry. The Intersolar trade fair opens its doors and K2 Systems is right in the middle of it! As one of the world's leading manufacturers of mounting systems for photovoltaic systems, the company will be presenting its innovations in Hall 6, Stand A6.280 under the trade fair motto "From Base to Peak". From carports to open spaces, from façades to pitched and flat roofs – there is a suitable solution for almost every area of application. The highlight is the AI-powered digital assistant K2 KAI, flanked by other innovations in software, systems and services. "Our goal is to make planning and installation faster, easier and more economical for PV professionals and to offer efficient solutions in the C&I sector in particular," explains Katharina David, Co-CEO of K2 Systems.

"From Base to Peak" is much more than a play on words with product names. The trade fair motto reflects the development of the company, which has been established in the solar industry for more than 20 years: "We have developed strategically from a rooftop specialist and now offer complete mounting system solutions for almost all applications," she says, summarizing the innovations.

"What all solutions have in common is our modular concept: products and services are ideally coordinated, scalable and flexible to use." Typical steps of a project cycle - planning, installation and documentation - are digitally accompanied and interlinked. This eliminates time-consuming intermediate steps and thus achieves efficiency.

K2 KAI: Intelligent. Fast. Always available

"Who the Heck is KAI?" – K2 Systems is already causing a stir at the entrance to the trade fair with a five-metre red advertising display and arousing curiosity among visitors. The solution follows at the booth: if you like, you can test the new tool directly on the computer. "K2 KAI is an AI-supported digital assistant that provides round-the-clock support in the planning and installation of K2 mounting systems, answers questions and helps with making contact," says Katharina David, introducing the new "K2nian". Structured thematic areas invite you to explore and offer deeper insights into the K2 world. The tool conducts dynamic dialogues with the user, provides answers in real time and thus a high level of utility. Why does the company rely on AI, despite the proven personal support? "Quite simply: We offer our customers a smart dialogue partner that consistently digitally expands our service promise. Uncomplicated, direct and without waiting times, especially if the personal contact person is not available."

Overview of all Intersolar highlights: <https://k2-systems.com/en/company/news/intersolar-our-highlights-2025/>

Finding instead of searching: MyK2 Dashboard as a central cockpit

The digital experts at K2 Systems have also redesigned and expanded the user interface of the free MyK2 Account with additional functions. "MyK2 users now have a central cockpit as a starting point for their journey through K2 Systems' digital ecosystem," says co-CEO Willem Haag. The structure covers the entire process cycle. The clear dashboard offers PV professionals access to the K2 DocuApp for data collection and paperless documentation, to the K2 Base design software for project planning, and to practical functions such as MyK2Price and MyK2RoofHook in the DAH region – all accessible with one click. In addition, the product catalogue and technical drawings are quickly accessible from here, and date announcements for trade fairs and webinars as well as K2 News can be found centrally. For their own motivation and development, the user is also shown on the cockpit how far he has progressed in the K2 Trainings on certain topics.

More info: <https://k2-systems.com/en/digital-services/myk2/>

Vertical goes Digital: Façade systems can soon be planned in K2 Base

In Germany, for example, less than one per thousand of the façade potential has been exploited so far, as the Fraunhofer Institute ISE shows in its fact report on photovoltaics. Large façade areas are available, especially on commercial and industrial buildings, where energy costs are a decisive factor for profitability and competitiveness. This is further confirmed by the European industry association SolarPower Europe in its "Global Market Outlook For Solar Power 2024-2028", according to which interest in photovoltaics in the C&I segment is growing worldwide – strengthened by political support, financial incentives, technological advances and innovative business models.

Suitable mounting system solutions for vertical PV systems are available, as K2 Systems will be demonstrating at Intersolar: Whether concrete, masonry, corrugated sheet metal or thermal insulation – the K2 WallPV systems successfully introduced in recent months offer a suitable solution for every type of façade. Perfectly scalable to the size of industrial and commercial buildings, the systems can be used on both new and existing buildings. What many customers have asked for and will now be able to enjoy: The façade systems can be planned from June 2025 in the K2 Base design tool. This means that solar installers can carry out the entire project process – from planning to installation – independently. In the software, after clicking on the flat roof under "Roof type", they have the choice between roof and façade. In the next step, they can choose between four types of façades:

- Concrete
- Masonry
- Trapezoidal sheet metal
- Corrugated sheet metal

The program then automatically draws a wall, which the planner can use as usual after adjusting the dimensions.



With their dedicated focus on customer needs, the K2 experts have implemented another wish of many planners in K2 Base: The well-known Dome 6 components are already being used in practice for elevation on trapezoidal sheet metal roofs. Now both the K2 S- and D-Dome on the K2 BasicRail long-rail system with BasicClip and the S-Dome 6.10 Classic LS on the K2 MultiRail short-rail system can be planned independently by PV professionals in the design software.

Information about K2 WallPV: <https://k2-systems.com/en/product-solutions-category/wallpv-facade-mounting-systems/>

Information about K2 Dome 6 on trapezoidal sheet metal: <https://k2-systems.com/en/product-solutions/k2-dome-6-system-trapezoidal-sheet-metal/>

Flat roof: The Dome family is growing

The product family around the K2 Dome 6 flat roof all-rounder is getting a lot of growth this year: K2 Systems will be presenting K2 D-Dome 6.10 Xpress LS for high load cases on flat roofs at Intersolar. The advantages of the pre-assembled Xpress system are combined with those of the LS system. Thanks to the “click” mechanism, assembly is largely tool-free and extremely time-saving. This innovation is particularly relevant for the C&I sector, where the demand for clamping on the long side - due to the large-format modules, especially in the project sector, is considerable. This is exactly what is made possible by the new solution, which is already available in K2 Base.

Saving time is an argument that speaks in particular for the K2 Dome 6 Xpress Connector presented at the trade fair. As a fast rail connector, it offers enormous added value because it connects the K2 BasicRails to each other without tools. The entire assembly process is also accelerated by the fact that it is pre-assembled and delivered as a complete component. On top of that, the K2 Dome 6 Xpress Connector scores with integrated equipotential bonding.

Material savings, especially ballast and roof anchors, can now be improved on flat roofs with the K2 Dome 6 RidgeConnector. It couples module blocks over the ridge and connects the K2 BasicRails with each other. This creates a larger composite and system area, so that in many cases the required ballast and/or roof anchors attachments are reduced.

With the new K2 Dome 6 LoadSolver, the load-distributing area under the PV system can be increased and the pressure on the insulation is therefore decreased. Quick to install thanks to the “twist-and-lock” principle, the K2 Dome 6 LoadSolver has the same advantages as the proven K2 Mat S: it has a high static friction coefficient and is soft to the touch.

Last but not least, the K2 experts have also come up with something for quick installation on green roofs, which becomes even easier: K2 GreenRoof Vento is offered in the form of ready-made beam kits in two lengths for a 10° elevation. Of course, the kits are included in K2 Base and can be planned there now.

More information about the Dome 6 flat roof all-rounder: <https://k2-systems.com/en/product-solutions/dome-6-system/>

Solutions for green and gravel roofs: <https://k2-systems.com/en/product-solutions/green-roofs-gravel-roofs/>

Pitched roof: Less is more

For medium and light loads, the K2 SingleHook 3S Light is very powerful, although it is extremely material-saving: the aluminium roof hook has a 6 mm low jib, so it can be easily carried out when



installed under tiles and concrete tiles. This expands the range of application of the K2 SingleRails, which brings advantages in warehousing for both retailers and solar installers. Incidentally, they can already select the "Light" roof hook in the planning software.

K2 Systems' basic idea of developing modular products in such a way that they can be variably integrated for different areas of application has once again created added value for pitched roofs: The K2 InsertionRail 2.0, known from façade solutions, can also be installed here as a practical insertion system. As a result of this consolidation, retailers and installers alike benefit from streamlined warehousing. The K2 InsertionRail 2.0 shows its advantages in combination with the K2 MultiRail or the K2 SolidRail: Installation is much easier and faster. As of June, all combinations can be statically determined in K2 Base beforehand. For trapezoidal roofs, a cost-optimised variant is also available with the K2 InsertionRail 2.0 fixed simply with K2 BasicClips.

The K2 FlexAdapter now provides the right answer to the considerable demand – especially in Eastern Europe and Scandinavia – for a solution for imitation brick sheets. True to the saying "Small but mighty", the adapter enables the K2 BasicRail to be mounted on curved roof tile sheets and compensates for different heights and inclinations so that the modules can be installed without stress. A sealing sleeve, attached under the K2 BasicClip, offers additional safety. The adapter can be used on barrel or rounded roofs.

Information on all pitched roof systems: <https://k2-systems.com/en/product-solutions-category/pitched-roof-systems/>

Connecting Strength – pooling strengths with partners

K2 Systems sees its own portfolio as more than only a safe and reliable interface between energy generation and buildings. "Strong solutions are often created in close cooperation with strong partners," explains Katharina David, and Willem Haag adds: "By pooling expertise, we can offer tailor-made solutions together with these partners." At last year's trade fair, for example, a coordinated solution was presented in cooperation with Sika, the leading supplier of industrial sealants and adhesives: K2 Dome 6 Lifted LS creates an additional distance between the modules and the roof cladding on the flat roof. The solution with SikaRoof® Anchor for firmly anchoring the K2 Dome 6 systems can now be planned and statically verified in the K2 Base planning tool. For pitched roofs up to 35°, the SingleRail IFP for foil membrane roofs offers an elevated option to create a larger space between components and the roof and improve the drainage of water, leaves and dirt. This solution was also developed in close collaboration with Sika and is ideal for roofs with low load reserves, as the elevation is done by means of anchor plates and no additional ballasting is required.

In addition, the K2+ interface enables cooperation with strong partners for optimized digital services: currently, the planning tools from Huawei (FusionSolar SmartDesign) in Europe, Kostal (Solar Plan) and PVcase (RoofMount) are also linked to K2 Base in addition to the already affiliated ones. Data transfer between tools is seamless without having to manually re-enter data. In addition, more than 30 different webshops of European PV and electrical wholesalers can now be accessed via the software, which automates and simplifies the ordering process.

Information on the cooperation with Sika: <https://k2-systems.com/en/company/news/connecting-strength-with-sika/>

About K2 Base: <https://k2-systems.com/en/digital-services/k2-base/>



Building-independent: ground-mounted and carports

Ground-mounted photovoltaics – in combination with battery storage systems – have the lowest levelized cost of electricity and are widely accepted by the population. In the implementation of such projects, the efficiency of assembly is a decisive criterion. The K2 N-Rack solutions are available in practical, pre-assembled kits for smaller ground-mounted systems on concrete foundations (2 x portrait 20°) and can now also be connected to ground screws (3 x portrait 15° or 2 x portrait at 20° elevation angle). With the N-Rack system, planners can choose variably between all three foundation types, pile driven, concrete and ground screwed, depending on the size of the project and terrain conditions.

As a further option for the installation of a building-independent PV system, K2 Systems will be presenting the K2 Carport System at Intersolar, which is a convenient single-column system that is particularly attractive for larger areas due to its flexibility with single and double rows. This solution scores particularly well in the C&I sector due to its aesthetics and the possibility of customising the colour according to customer requirements.

Details on the outdoor solutions: <https://k2-systems.com/en/product-solutions/ground-mounted-solutions/>

More about the K2 Carport System: <https://k2-systems.com/en/product-solutions/k2-carport-system/>

Sustainability, research and innovation

At the Solar Power Summit a few weeks ago, the experts agreed: the expansion of photovoltaics in Europe must be driven forward for more climate protection, security and independence. K2 Systems has always been committed to these goals. "Our mounting systems generate electricity every day, which is roughly the equivalent of 12 coal-fired power plants," explains Katharina David. Sustainability is not a sideshow – but part of the K2 DNA. The PV expert is particularly proud of the very low CO₂ footprint of 4.8 t for the aluminum used in K2 products compared to the European (6.8 t) and also global (16 t) average. 85 percent of the products are manufactured in the EU – a strategic approach that pays off, among other things, in terms of regional value creation. At the same time, the company is investing in research and development, thereby strengthening Germany as a business location. A commitment that the Certification Office for Research Allowances (Bescheinigungsstelle Forschungszulage BSFZ) of the Federal Ministry of Education and Research recently honored with the "BSFZ Seal of Approval R&D" as proof of innovation competence.

More: <https://k2-systems.com/en/company/sustainability/>

K2 Systems GmbH is one of the world's leading manufacturers of photovoltaic mounting systems with twenty years of experience. Founded in 2004 and headquartered in Renningen near Stuttgart, the company offers universal components for flat and pitched roofs that are easy to install, durable and safe. The company's portfolio also includes mounting systems for façades, ground mounts and carports. Digital services, such as the K2 Base planning software, support the process, making PV projects quicker and easier.

K2 Systems develops in Germany, manufactures predominantly in Europe, and focuses on a sustainable sourcing strategy. PV systems with K2 substructures are in use in over 130 countries and generate approximately 124 GWh per day. The heart of its strategy is the development of easy-to-install mounting systems that are precisely tailored to the needs of customers. With around 420 employees at eleven global locations and in close cooperation with international partners, the company is working towards the vision of global electricity generation from solar energy. This is how K2 Systems is driving the energy transition.

Media contact: Nina Oral | +49 (0)7159 42059-490 | n.oral@k2-systems.com

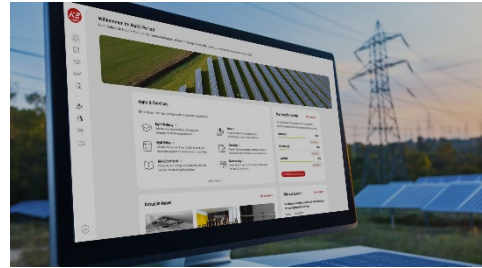
Photos and graphics for download can be found at <https://k2-systems.com/en/company/press-media/>



Connecting Strength



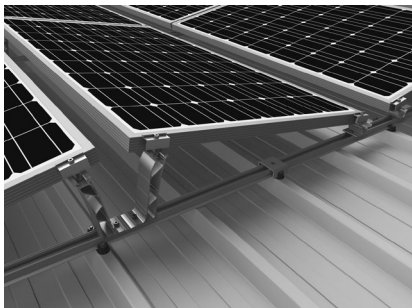
K2 KAI: A smart assistant with AI power. Intelligent. Fast. Always available.



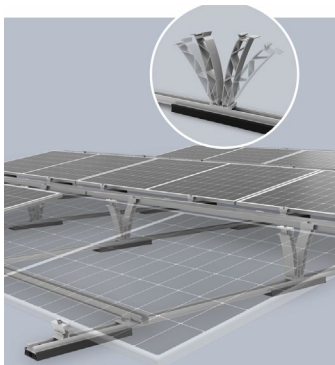
MyK2 Dashboard is the central cockpit for the entire project cycle



The modular façade solutions can soon be planned independently by planners in K2 Base: K2 WallPV PerfoRail, MultiRail and FacadeRail.



K2 Dome 6 components can be used elevated on the trapezoidal roof - the various variants with K2 BasicRail and MultiRail can now be planned in K2 Base.



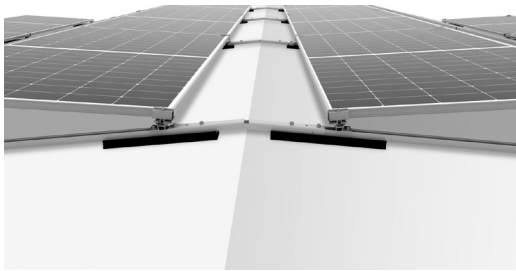
The clever click mechanism saves enormous time when assembling the new K2 D-Dome 6.10 Xpress LS System. This pre-assembled solution is ideal for large load cases.



With the help of the K2 Dome 6 Xpress Connector, the K2 BasicRails can be joined together without tools - an ideal rail connector when things have to go (even) faster.



Connecting Strength



Small effect with a big effect: by connecting the module blocks via the ridge, a larger composite area is achieved. This can enable the reduction of ballast or roof anchors.



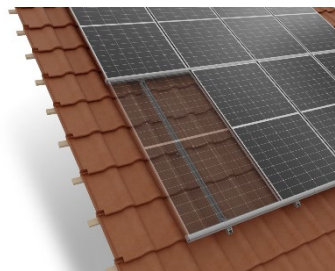
Quick to install thanks to the practical twist-and-lock function: the K2 Dome 6 LoadSolver ensures a better distribution of pressure loads on the insulation.



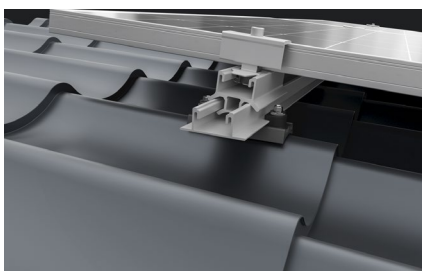
The K2 GreenRoof Vento green roof system is now also available as a solution with pre-assembled top chord sets and can be planned in K2 Base.



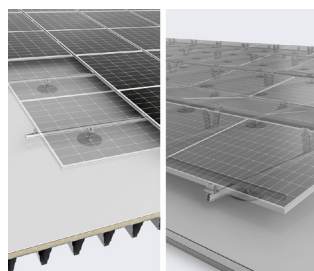
Less is often more: The bracket of the K2 SingleHook 3S Light is just 6 mm thick, so that it can be carried through with concrete roof tiles with less effort.



The K2 InsertionRail 2.0 can be used on the façade as well as on the flat roof.



For easy installation on imitation brick sheets, the new K2 FlexAdapter provides height and inclination compensation.



The cooperation makes coordinated solutions between the roof and the mounting system possible: In the K2 Base planning tool, SikaRoof® Anchors can be statically calculated for the fixed anchoring of the Dome 6 systems.



Connecting Strength



Maximum variability: K2 N-Rack can be mounted on pile driving foundations, as here in an ground-mounted project in a quarry area, but also on concrete and screw foundations.



With a minimum height of 2 m and a maximum height of 3.15 m, K2 Carport offers sufficient space and protection for both compact cars and higher commercial vehicles.