



Plan simply, install quickly:

K2 Systems launches two new pitched roof solutions

Now available and plannable after trade fair premiere: K2 SingleHook 3S Light and InsertionRail 2.0

Unveiled to industry professionals at the Intersolar trade fair, they are now officially available: the SingleHook 3S Light and the InsertionRail 2.0. With their market launch, K2 Systems expands its portfolio with a particularly installation-friendly solution for tiled roofs. And at the same time, the new generation of insertion rails stands out for its modularity.

SingleHook 3S Light: Slim Bracket, More Flexibility

The SingleHook 3S Light differs from the established SingleHook 3S with a particularly low-profile bracket: the arm measures just 6 millimeters in height. This adjustment significantly reduces the need for tile modification and provides more clearance for bracket installation—an advantage especially noticeable when working with concrete roof tiles.

Thanks to its optimized material design, the roof hook is ideal for regions with moderate wind loads. At the same time, it expands the application range of the K2 SingleRail system and offers an alternative to stainless steel roof hooks. This brings benefits for distributors, planners, and installers—especially in terms of inventory management and system planning. The SingleHook 3S Light is now available and already integrated into the K2 Base planning software, allowing it to be incorporated directly into project planning—quickly, easily, and with reliable structural calculations as usual.

InsertionRail 2.0: The New Generation of Insertion Rails

Also new is the K2 InsertionRail 2.0, presented at Intersolar. Previously known from façade solutions, this insertion rail can now also be used on pitched roofs, replacing the first generation of insertion rails. In combination with the K2 SolidRail, K2 MultiRail, and K2 SingleRail, the InsertionRail is suitable for a wide range of roofing types, including tile, trapezoidal sheet metal, corrugated metal, and fiber cement coverings. The optimized CrossConnector also simplifies installation and allows for easy adjustments.

Thanks to its use on both façades and pitched roofs, solar installers now have a true “all-purpose rail” in stock and benefit from convenient handling: the modules are simply inserted without the need for screwing or clamping. The insertion profile adds extra stability to the module frame and also



contributes to a visually appealing overall appearance. The InsertionRail 2.0 is already available and also integrated in the K2 Base planning tool.

Conclusion

With the SingleHook 3S Light, K2 Systems brings a well-thought-out addition to the tiled roof segment to the market – technically solid, installation-friendly, and with a touch of lightness – in the truest sense of the word. And with the InsertionRail 2.0, an equally versatile and installation-efficient rail system is now available, simplifying both storage and installation. Two solutions, one goal: more efficiency and flexibility in PV installation.

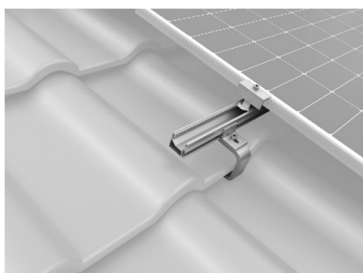
More: <https://k2-systems.com/en/company/news/singlehook-3s-light-available-now/> and <https://k2-systems.com/en/company/news/going-modular-insertionrail-2-0-now-also-for-pitched-roofs/>

K2 Systems GmbH is one of the world's leading manufacturers of photovoltaic mounting systems with twenty years of experience. Founded in 2004 and headquartered in Renningen near Stuttgart, the company offers universal components for flat and pitched roofs that are easy to install, durable and safe. The company's portfolio also includes mounting systems for façades, ground mounts and carports. Digital services, such as the K2 Base planning software, support the process, making PV projects quicker and easier.

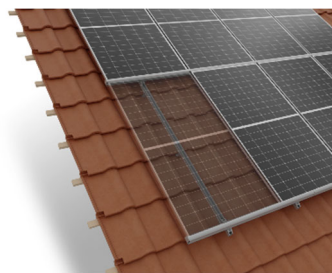
K2 Systems develops in Germany, manufactures predominantly in Europe, and focuses on a sustainable sourcing strategy. PV systems with K2 substructures are in use in over 130 countries and generate approximately 124 GWh per day. The heart of its strategy is the development of easy-to-install mounting systems that are precisely tailored to the needs of customers. With around 420 employees at eleven global locations and in close cooperation with international partners, the company is working towards the vision of global electricity generation from solar energy. This is how K2 Systems is driving the energy transition.

Media contact: Nina Oral | +49 (0)7159 42059-490 | n.oral@k2-systems.com

Photos and graphics for download can be found at <https://k2-systems.com/en/company/press-media/>



Less is often more: The bracket of the K2 SingleHook 3S Light is just 6 mm thick, so that it can be carried through with concrete roof tiles with less effort.



The K2 InsertionRail 2.0 can be used on the façade as well as on the roof.

