



---

# HIGHLIGHTS

*Connecting Strength: People. Power. Projects.*

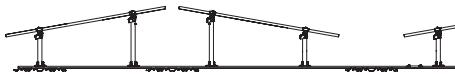


# Flat Roofs

## GreenRoof 2.0

System optimized for faster installation on green roofs

- Reduced number of components
- Flexible module layout and orientation
  - 10° or 15° tilt
  - Portrait/landscape
  - A, V or S shape
- Freely adjustable row spacing
- Clamping on the long side, no module approval required



A-Shape (Portrait)



V-Shape (Portrait)



S-Shape (Portrait)

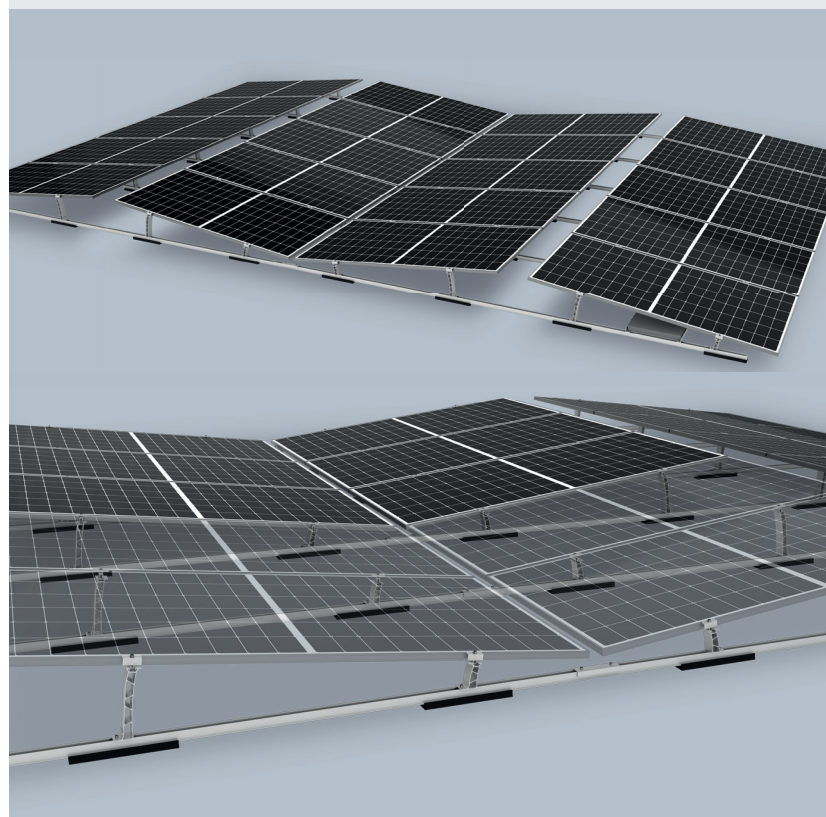
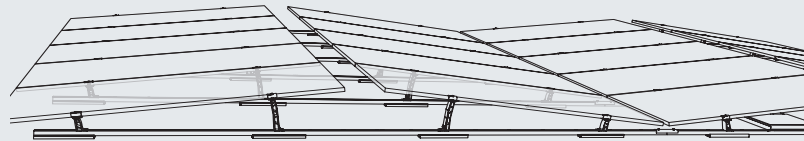


## Dome 6

### D-Dome 6.07 Classic Portrait

Portrait installation with 7° tilt

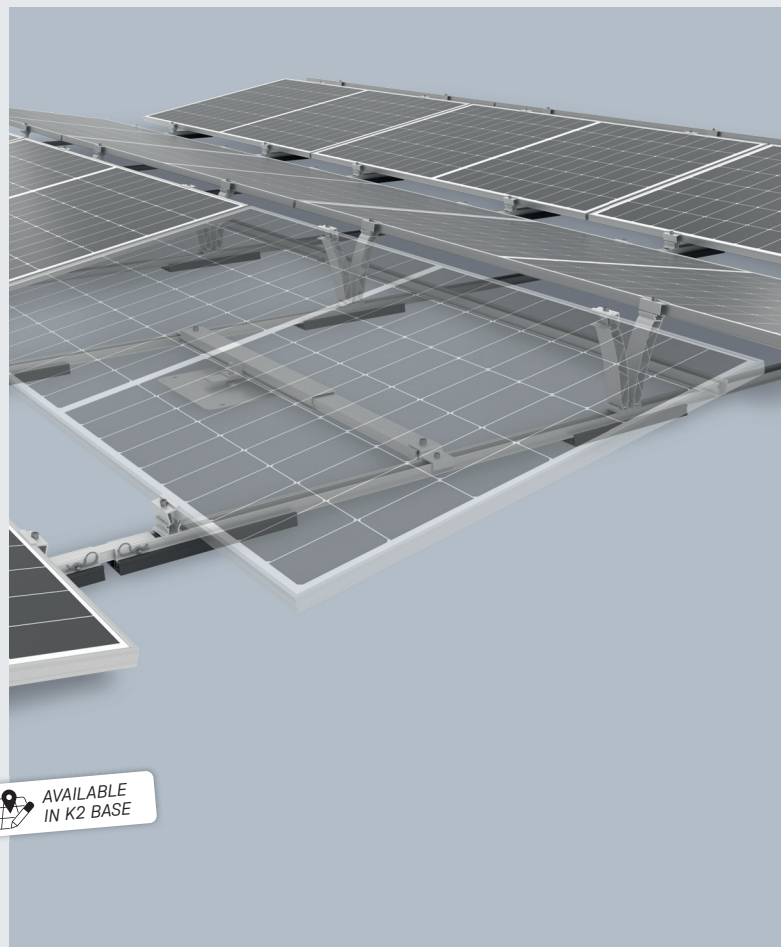
- SharedRail system reduces material usage and installation effort
- Larger ridge gap allows for easy maintenance and improved aerodynamics
- Enhanced rear ventilation thanks to increased clearance to the roof covering
- Long-side (LS) clamping fulfills the standard requirements of PV module manufacturers
- For all module sizes



## D-Dome 6.10 Xpress LS

### For higher load requirements, faster installation

- Faster installation thanks to pre-assembled components
- Landscape installation with a 10° tilt
- Long-side (LS) clamping fulfills the standard requirements of PV module manufacturers
- Suitable for PV modules with a width of 1134 mm and a length of up to 2500 mm
- Lightning current-carrying capacity with the new Dome 6 Xpress Connector

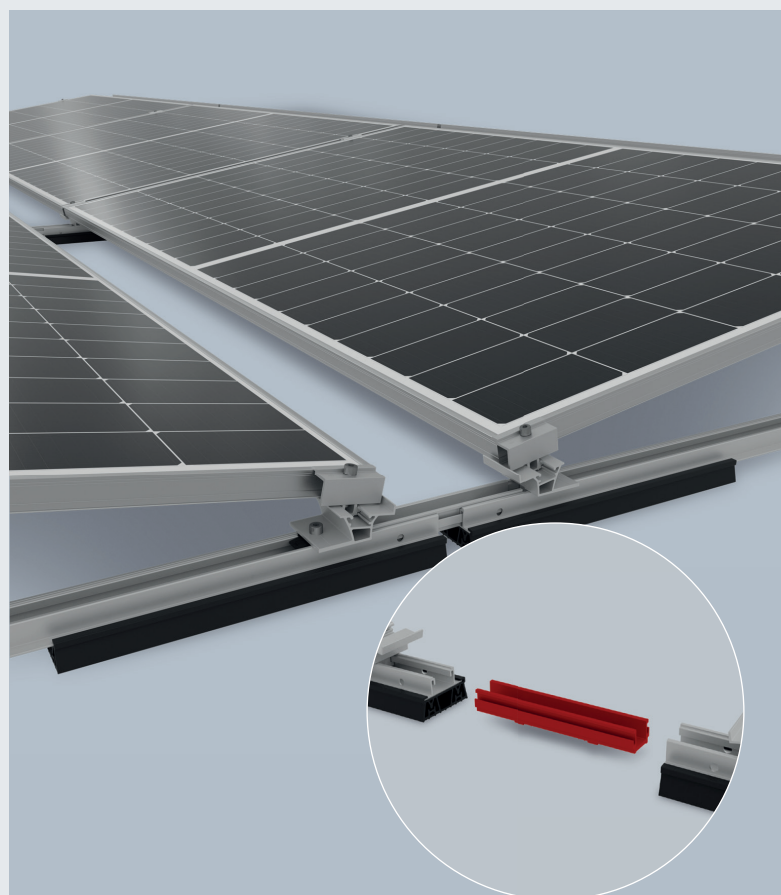


 AVAILABLE  
IN K2 BASE

## Dome 6 Xpress Connector

### Connecting Strength - better and faster!

- Simple snap-in design for tool-free installation
- Optimized component design
- Integrated equipotential bonding
- Meets advanced requirements with lightning current-carrying capability



**ALWAYS UP TO DATE**



All news at a  
glance

# SingleRail 36/50 RailConnector

## Optimized rail connector

- Simple snap-in mechanism for tool-free installation
- Integrated equipotential bonding



**ALWAYS UP TO DATE**

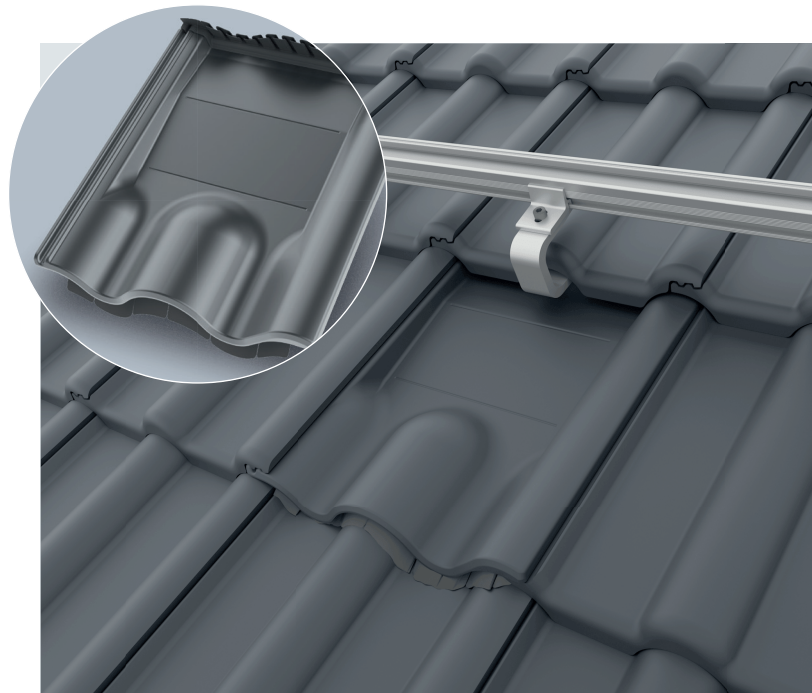


All news at a  
glance

## K2 4Tile

**Tile replacement solution for the most common types of concrete roof tiles**

- No need for tile forming
- No risk of tile breakage under high snow loads due to the roof hook bracket resting on the tile
- No tile modification required
- Attractive appearance in two colors

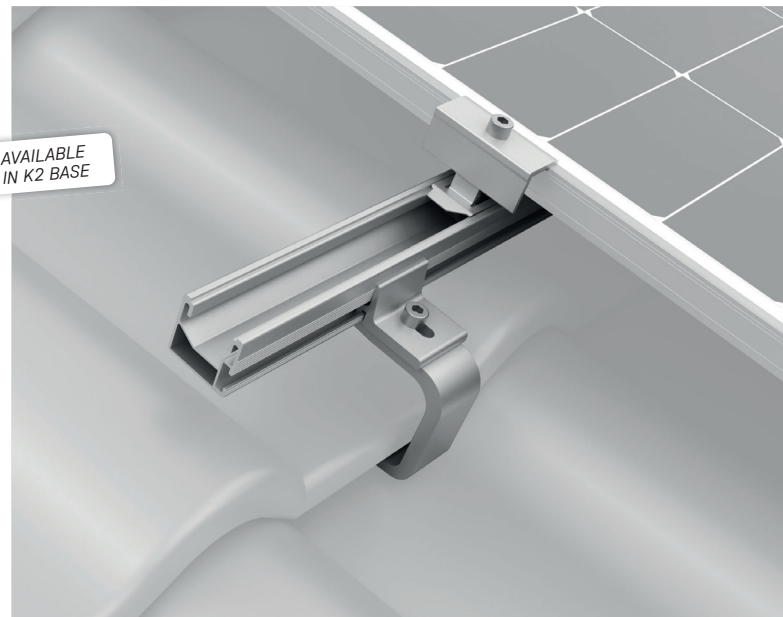


## SingleHook 3S Light

**The light version of our popular SingleHook 3S**

- Reduced material thickness
- Often no tile modification required
- Simpler and more flexible installation
- Suitable for regions with lower snow loads

 AVAILABLE IN K2 BASE

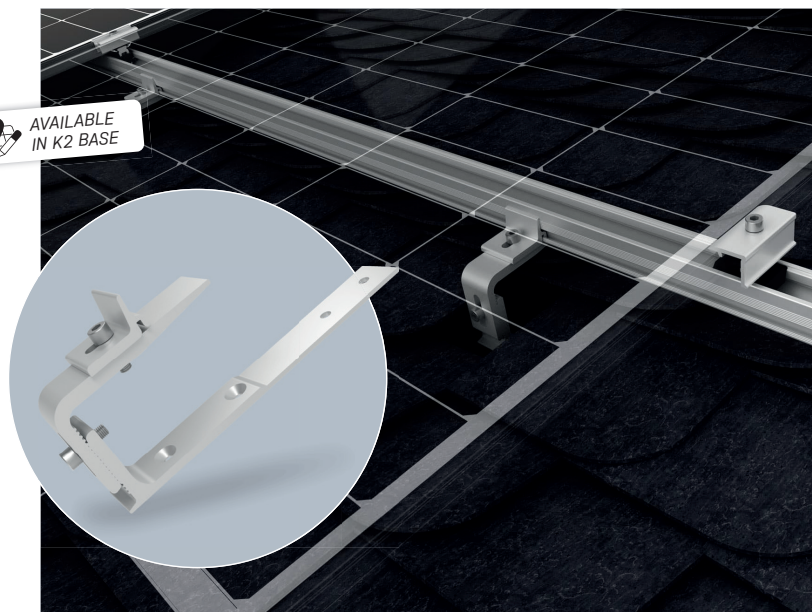


## SingleHook Slate

**Roof hook for slate roofing**

- Now also compatible with the SingleRail System
- Faster installation thanks to side mounting
- Greater flexibility due to height adjustability

 AVAILABLE IN K2 BASE

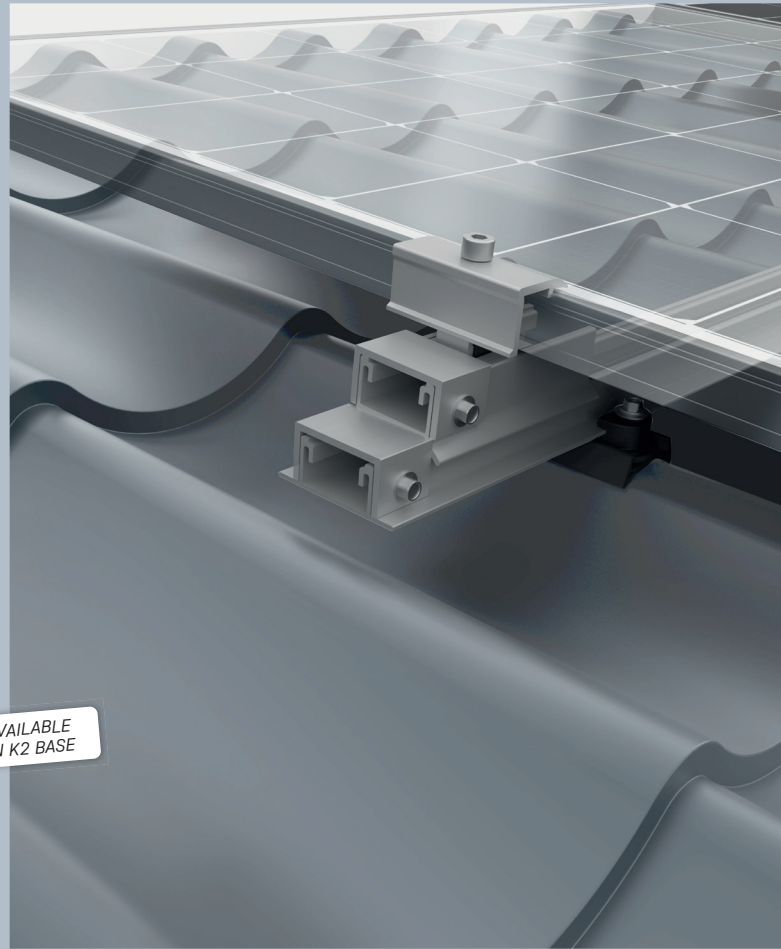


# Metal Roofs

## FlexAdapter

### New application area: metal roof tiles

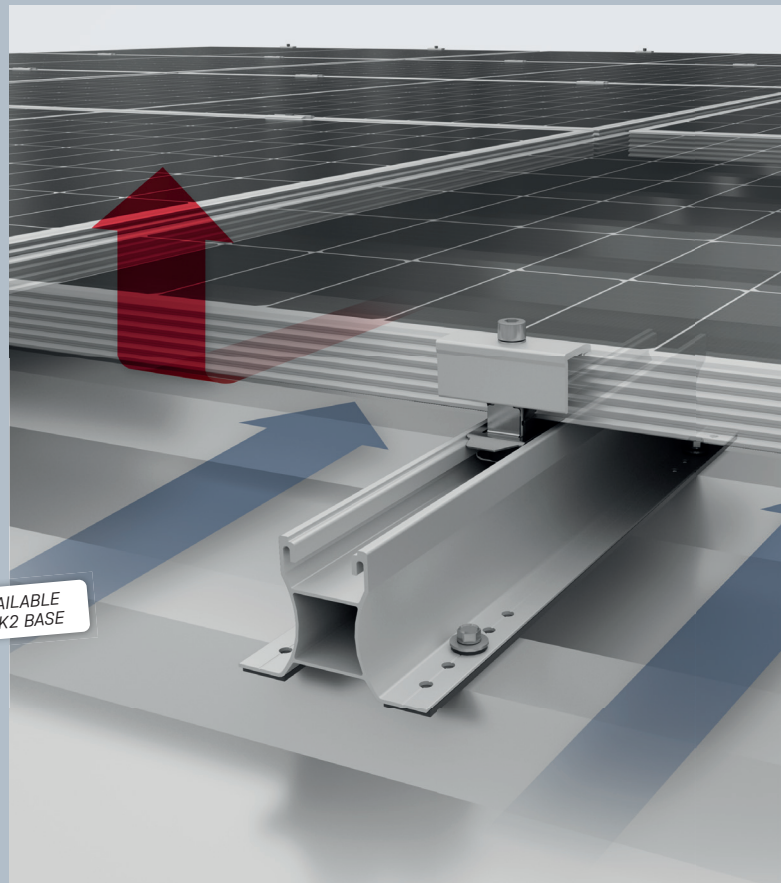
- Adapter for angle adjustment
- Inserted in BasicRail
- Sealing of the BasicClip with a CSM adapter made of EPDM



## MiniRail 60

### High version of MiniRail

- For trapezoidal sheet metal
- Portrait and landscape installation
- Greater clearance to roof covering thanks to 60 mm component height
- Improved rear ventilation of the PV modules
- Space for optimizers

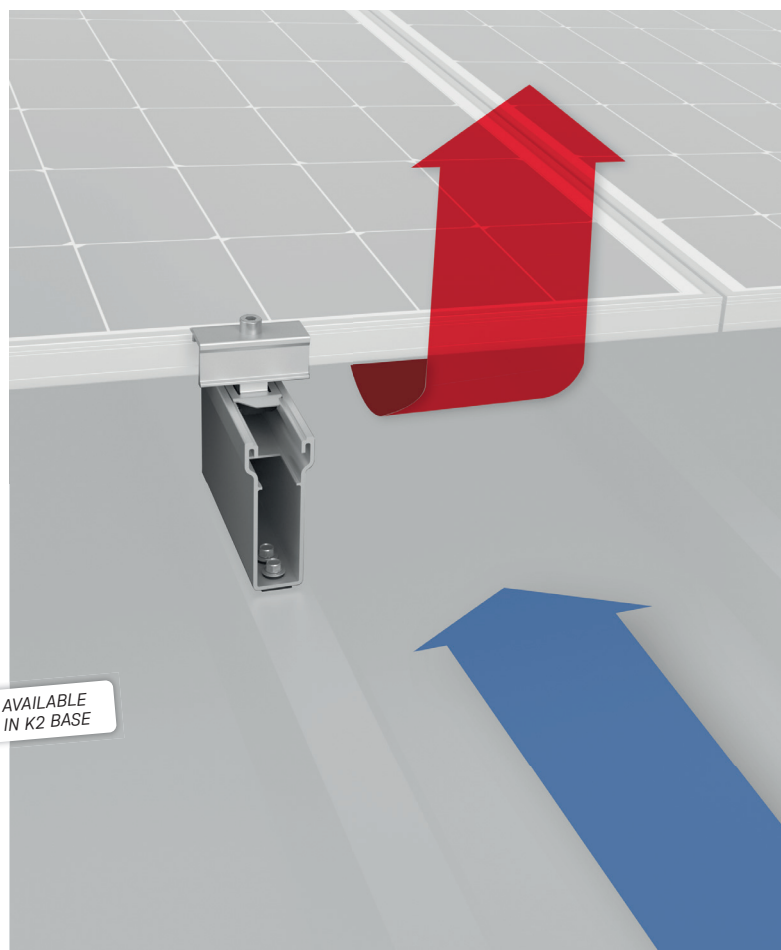


## MultiRail High

### High version of MultiRail

- For trapezoidal and corrugated sheet metal
- Landscape installation
- Greater clearance to roof covering thanks to 100 mm component height
- Improved rear ventilation of the PV modules
- Space for optimizers

 AVAILABLE  
IN K2 BASE

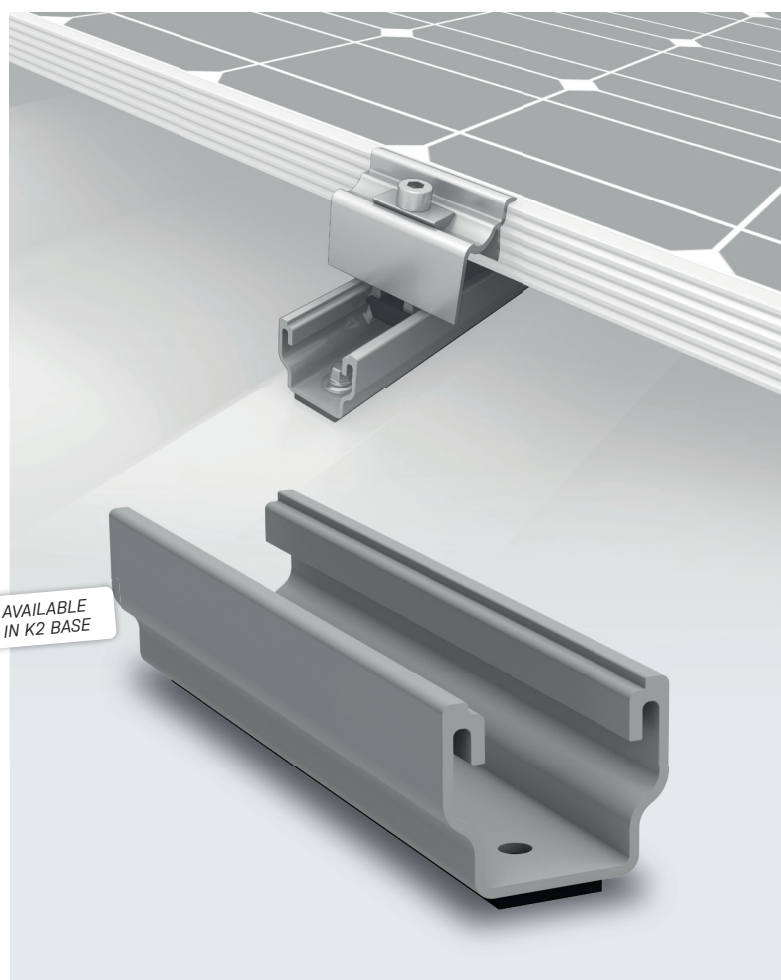


## MultiRail 15

### MultiRail in 150 mm length

- For trapezoidal sheet metal
- Landscape installation
- Depending on load requirements, fastening with 2 or 3 screws is possible, providing greater flexibility
- Simplified logistics: only one component

 AVAILABLE  
IN K2 BASE



**ALWAYS UP TO DATE**



All news at a  
glance

# Non-Roof

## Pi-Rack

### New ground-mounted system

- Few components, simple and highly stable
- Screw-free module installation in a double-sided insertion profile
- Module tilt of 10°-20° with 3x portrait, 10°-30° with 2x portrait
- All steel components, including driven piles, feature a zinc-magnesium-aluminum coating
- Organized cable management directly within the purlins or along the rafter profiles
- Also available with aluminum rafters



## Carport V

### Flexible and scalable PV carports

- Support geometry enables smaller screw or concrete foundations
- Support spans of over 10 m possible
- Project-specific design
- Simple module installation with clamping from below
- Design with or without trapezoidal sheet metal
- Optional rainwater management



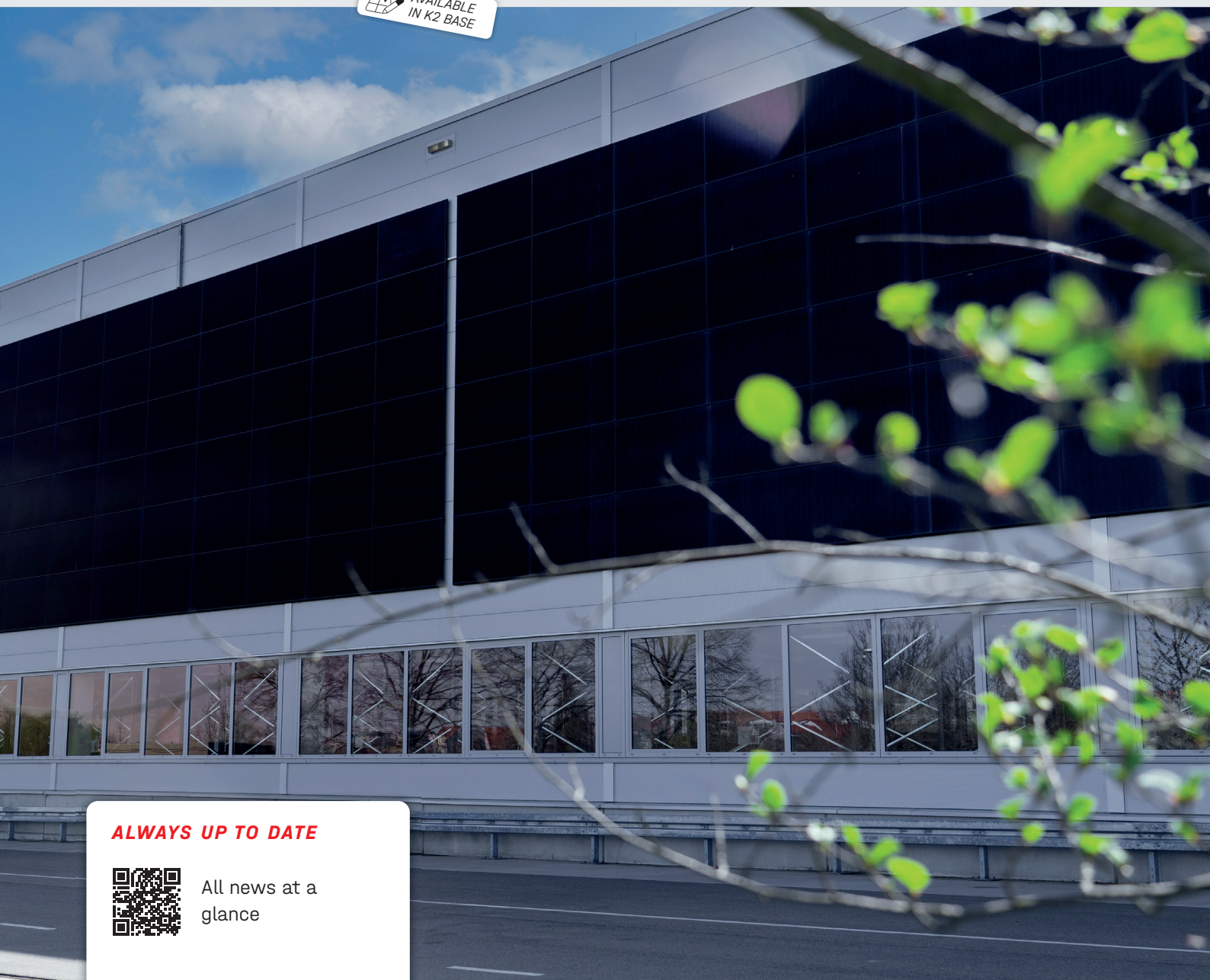
# WallPV

## Secure connection to various façade materials

- Concrete and solid masonry: WallPV FacadeRail
- Concrete with existing insulation: WallPV PerfoRail
- Trapezoidal and corrugated sheet metal: WallPV MultiRail

## CrossConnector T and CrossConnector Clip

- Integrated equipotential bonding
- Faster installation
- Architecturally appealing design



**ALWAYS UP TO DATE**



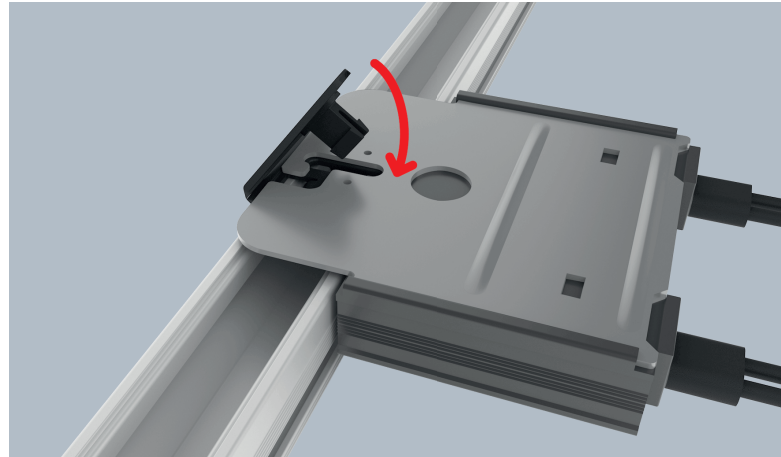
All news at a glance

## Making your work easier

### OptiClip

#### Optimizer installation

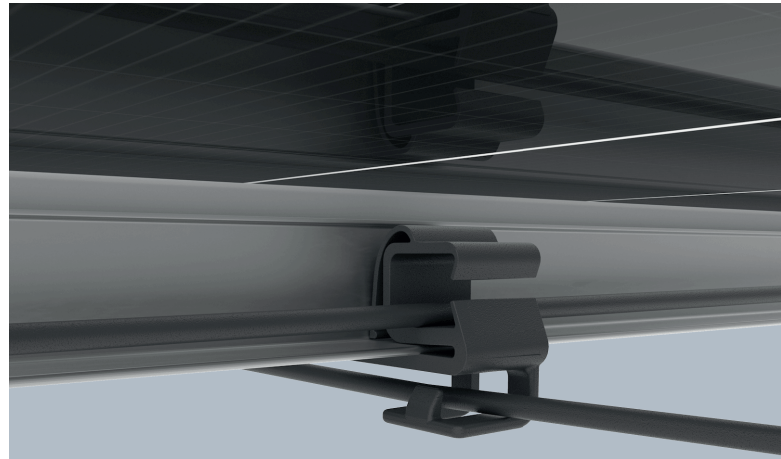
- Tool-free installation
- Compatible with standard optimizers and microinverters



### Alpha PV-Clip

#### Simple cable management

- One-handed installation on the module frame possible
- Clean cable routing, both vertically and horizontally



### SingleRail 50 BlackCover/ EndCap

#### Alternative to black anodized mounting rails

- Quick coverage of visible rail ends with the BlackCover
- Secured with the EndCap

AVAILABLE  
IN K2 BASE

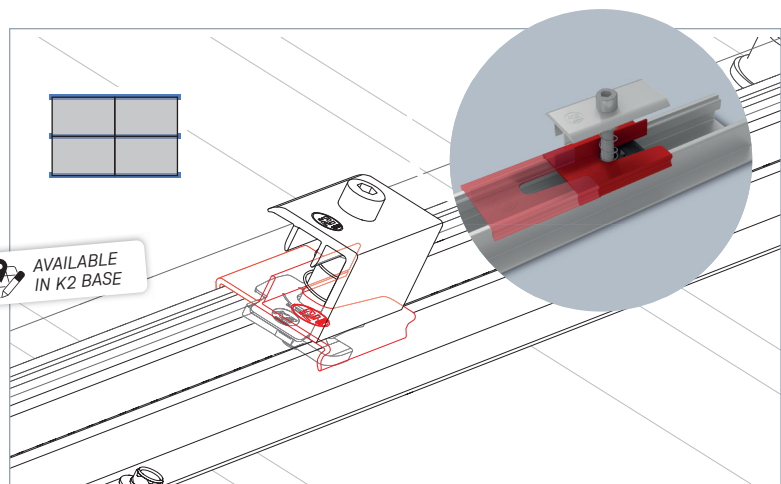


### AddOn XS

#### Landscape installation with a single rail layer

- Material saving shared rail layout
- Easy slide-in installation of XS module clamps

AVAILABLE  
IN K2 BASE

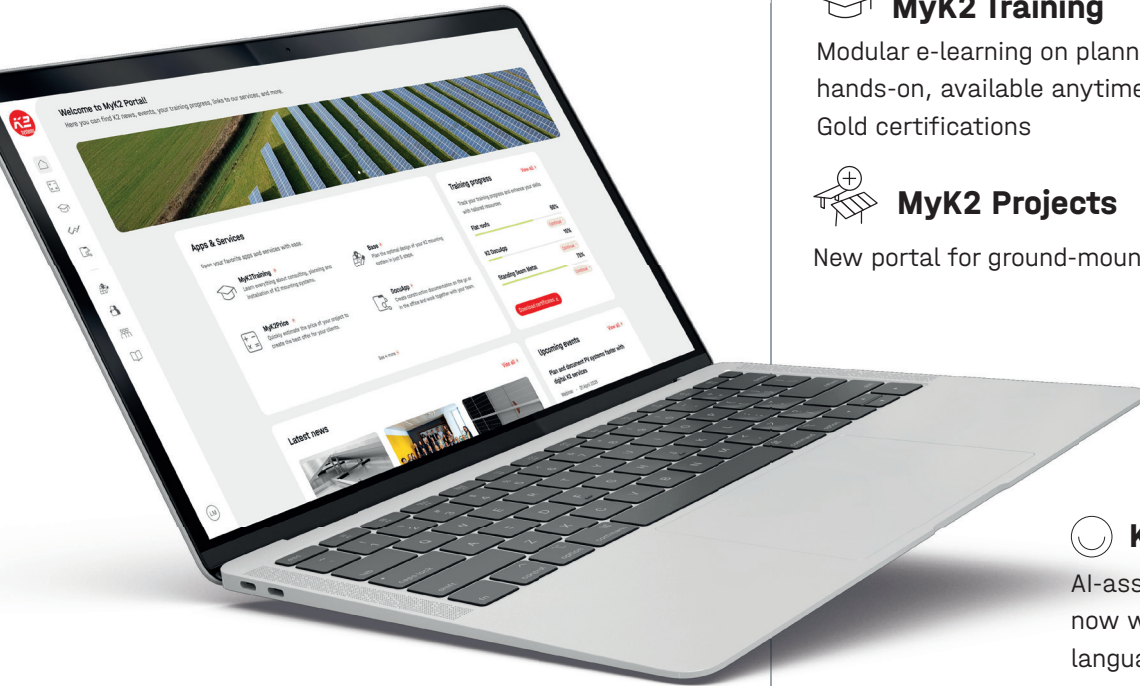


# K2 Digital Services



## MyK2

The central cockpit for all K2 Digital Services: news, features, and services in one account



### K2 Base

Intuitive PV planning with numerous interfaces to other industry tools



### MyK2 Training

Modular e-learning on planning and installation: hands-on, available anytime, with Bronze, Silver, and Gold certifications



### MyK2 Projects

New portal for ground-mounted and carport projects



### MyK2Price

Quick and autonomous target price calculation



### K2 Kai

AI-assistant: available 24/7, now with more knowledge and language options



**ALWAYS UP TO DATE**



All news at a glance

# Highly sustainable



## KEY FACTS

### PERFORMANCE

**> 40 GW** ⚡

total output from installed K2 Systems

### CLEAN ENERGY

**126 GWh** ☀️

per day are generated using K2 Systems  
- the equivalent of 12 coal-fired power plants

### REGIONAL VALUE CREATION

**85 %** 🇪🇺

of K2 products are produced in the EU

### CO2 FOOTPRINT

**4.5 t** 👣

for the aluminium used in K2 products -  
lower than the global and European averages



Discover more about  
K2's commitment:  
2025 Sustainability Report